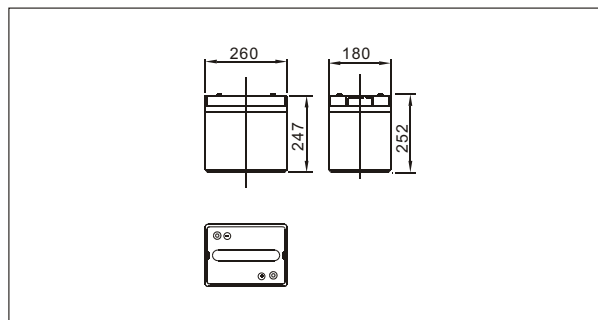




## TL12-150(12V150AH/HR)



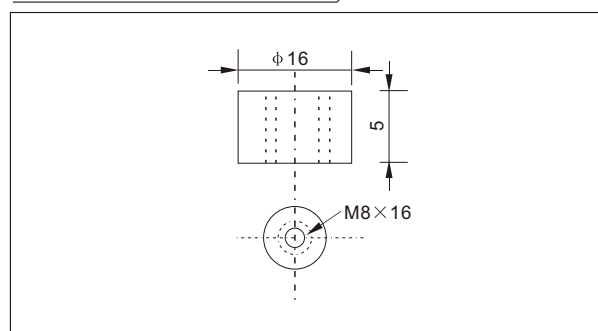
### Outer dimensions (mm)



### Specifications

Nominal Voltage		6V
Rated capacity (10 hour rate)		150 Ah
Dimensions	Total Height	252 mm (9.92 inches)
	Height	247 mm (9.72 inches)
	Length	260 mm (10.2 inches)
	Width	180mm (7.09 inches)
Weight Approx		27Kg (59.67 lbs)

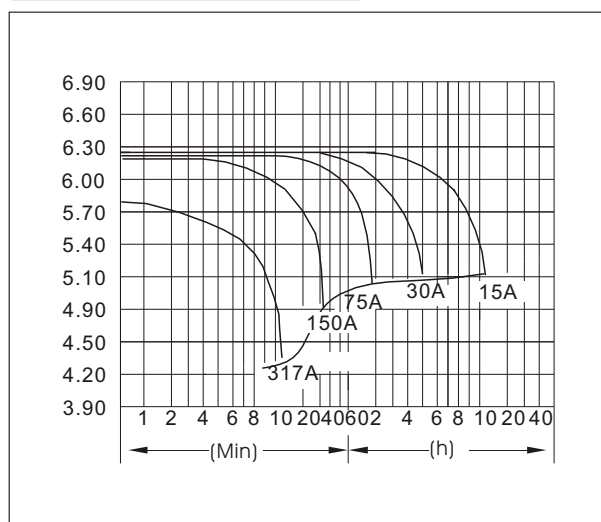
### Terminal Type (mm)



### Characteristics

Capacity 25°C(77°F)	10 hour rate(18.0A) 5 hour rate(24.0A) 1 hour rate(90.0A)	150 AH 120 AH 90 AH
Internal Resistance	Full charged Battery at 25°C(77°F)	Approx 1.6 mΩ
Capacity affected by Temperature (10hour rate)	40°C(104°F) 25°C(77°F) 0°C(32°F) -15°C(5°F)	102% 100% 85% 65%
Self-Discharge at 25°C(77°F)	Capacity after 3 month storage Capacity after 6 month storage Capacity after 12 month storage	91% 82% 64%
Terminal	T19	
Charge (constant Voltage)	Cycle	Initial Charging Current less than 60 A Voltage 7.05-7.2V
	Float	Voltage 6.75-6.90V

### Discharge Curves 25°C(77°F)



Constant Current(Amp) and Constant Power(Watt) Discharge Table at 25°C(77°F)

Time		5min	10min	15min	30min	1h	2h	3h	4h	5h	8h	10h	20h
4.80V	A	480	317	255	171	90	52.5	38.6	30.0	24.8	17.6	15.8	8.5
	W	2479	1690	1368	919	486	288.2	214.5	168.8	140.7	100.6	91.0	49.4
5.10V	A	465	286	240	164	85	50.1	37.5	29.3	24.3	17.1	15.5	8.3
	W	2485	1595	1344	918	478	288.7	217.1	170.1	141.6	100.0	90.8	48.4
5.25V	A	450	255	210	153	82	48.9	36.6	28.8	24.0	17.0	15.2	8.3
	W	2458	1453	1199	880	474	283.6	213.2	168.5	140.7	99.7	89.6	48.8
5.40V	A	434	241	195	141	79	47.7	35.7	28.4	23.4	16.5	15.0	8.1
	W	2434	1388	1125	817	461	279.3	210.5	167.4	138.3	97.8	89.1	48.2
5.55V	A	419	226	180	126	77	46.5	34.5	27.6	22.8	16.1	14.3	7.7
	W	2377	1306	1049	737	450	274.8	204.9	164.4	136.0	96.1	86.0	46.4

