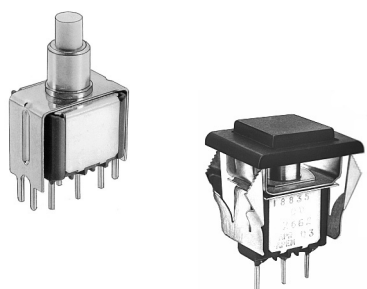


# 18000 series

## Snap-action momentary pushbutton switches

*Distinctive features and specifications*



- Panel and PC mount models
- Snap-in panel mounting version
- Tactile feedback

### ELECTRICAL SPECIFICATIONS

- Max. current/voltage rating with resistive load :
    - gold plated brass contacts : 100mA - 30VDC
    - gold plated silver contacts : 1A 125VAC, 1A 30VDC
  - Initial contact resistance : 50 mΩ max.
  - Insulation resistance : 1.000 MΩ min.
  - Dielectric strength : 1.000 Vrms 50 Hz min.
  - Electrical life : 60.000 cycles at full load
- Models for high currents : see 18635A and 18645A at the end of the series.

### MATERIALS

- Case : PBT
- Actuator : polyamide, glass filled
- Bushing : brass, nickel plated
- Housing : stainless steel
- Bracket : tin plated steel
- Contacts
  - AD** : silver, gold plated
  - CD** : brass, gold plated
- Terminal seal : epoxy

### GENERAL SPECIFICATIONS

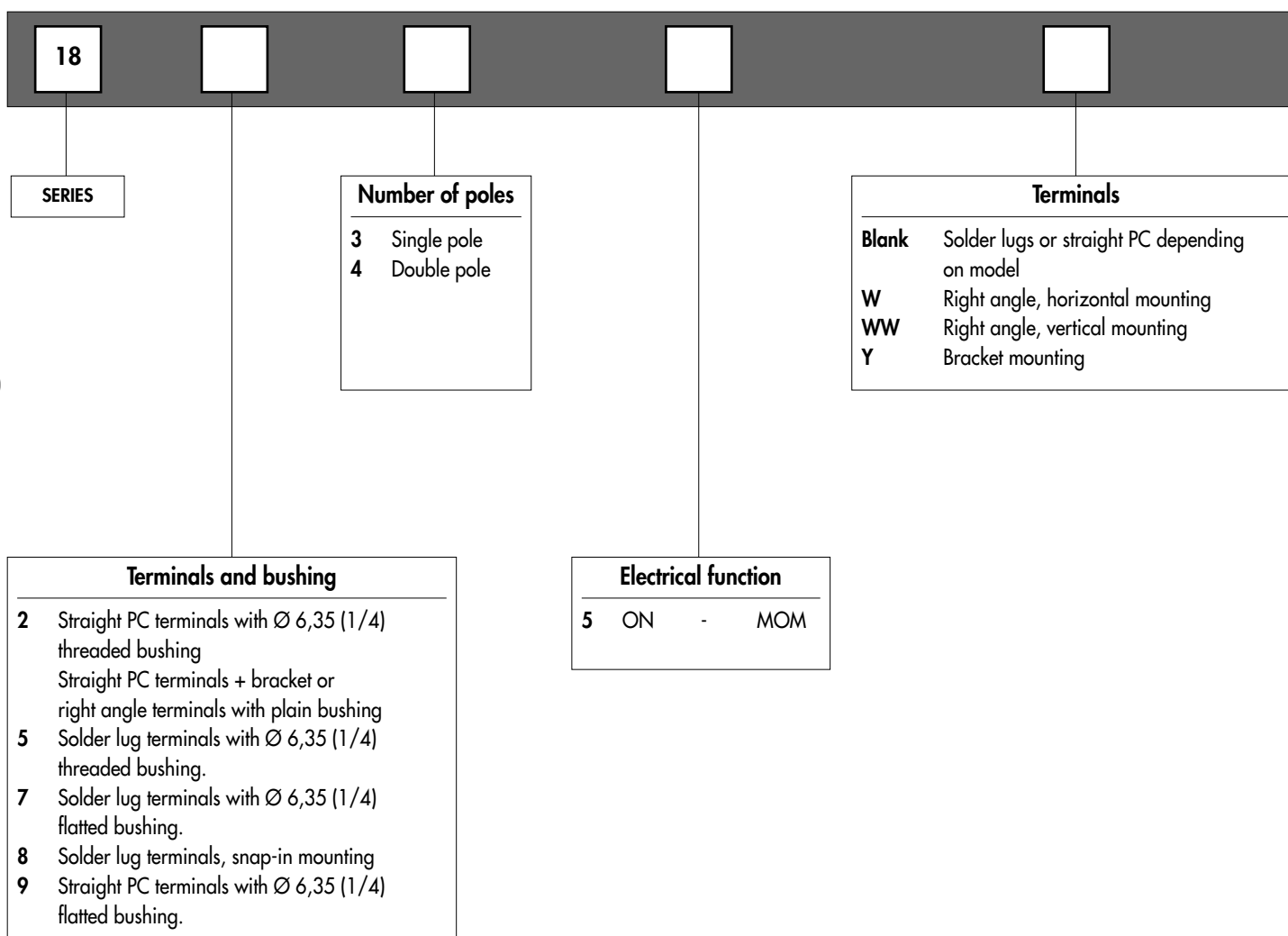
- Total travel : 0,5 mm (.019)
- Torque : 1,25 Nm (.922 Ft.lb) max. applied to nut
- Operating temperature : -30°C to +65°C
- Soldering : 300°C, 3 sec. max.

# 18000 series

Snap-action momentary pushbutton switches



Overview



B

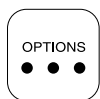
## ABOUT THIS SERIES

On the following pages, you will find successively :  
 - model structure of switches  
 - options in the same order as in above chart

**Dimensions** : first dimensions are in mm while inches are shown as bracketted numbers.



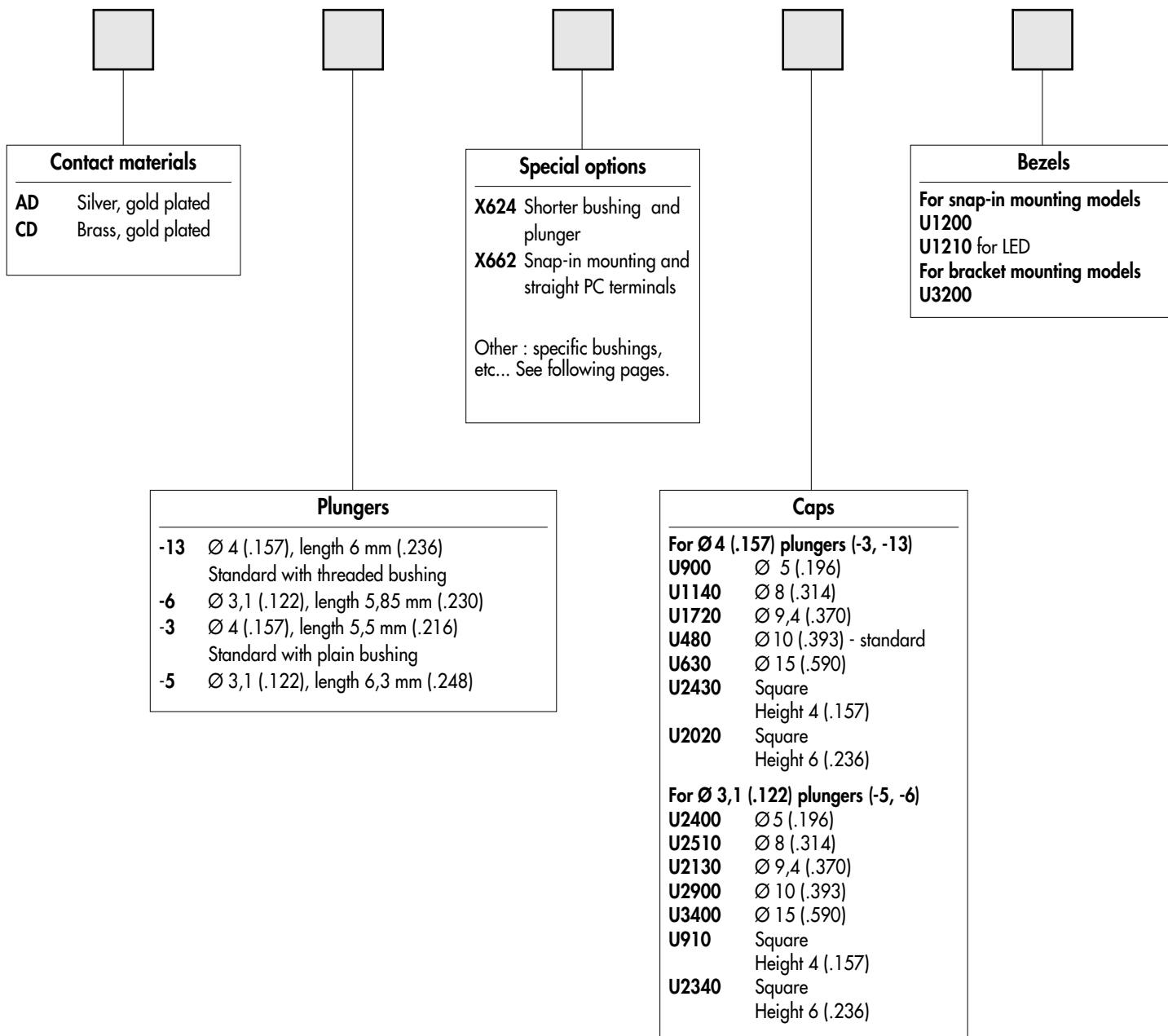
**NOTICE** : please note that not all combinations of above numbers are available. Refer to the following pages for further information.



# 18000 series

Snap-action momentary pushbutton switches

Overview



**Sealing boots** are available to protect the switches against dust and water. They are presented in section H.



**Mounting accessories** : standard hardware supplied with all models with Ø 6,35 (1/4) threaded bushing : 2 hex nuts 8 mm (.314) across flats, 1 locking ring and 1 lockwasher. Standard and special hardware available are presented in section I.

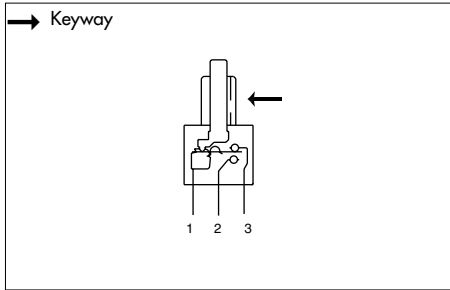


**Packaging unit** : 25 pieces for W, WW double pole and 18800 models  
50 pieces for other models.

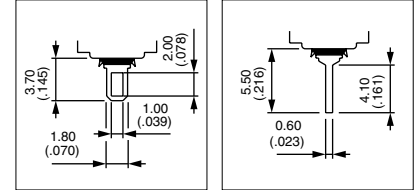
# 18000 series

Snap-action momentary pushbutton switches

Threaded bushing  $\varnothing 6,35$  (1/4) : 18500 - 18700 - 18200



- Solder lug or straight PC terminals
- Epoxy sealed terminals standard



MODEL STRUCTURE

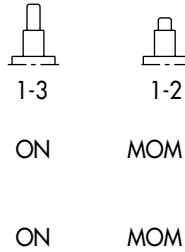


Shown with standard plunger (-13)

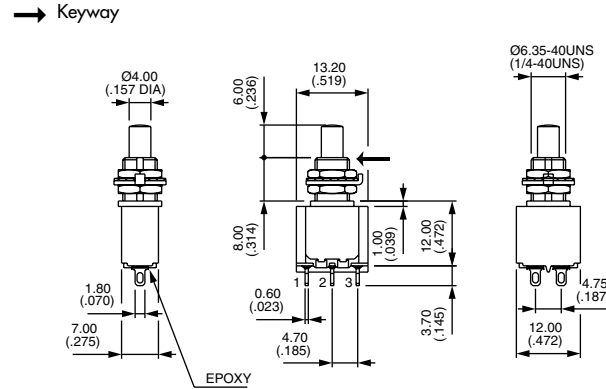
## Solder lug terminals : 18500



Single pole  
**18535**  
Double pole  
**18545**



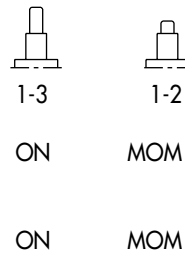
ON      MOM  
ON      MOM



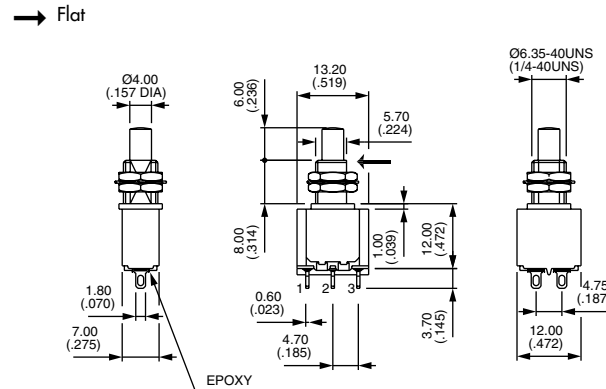
## Flatted bushing - solder lug terminals : 18700



Single pole  
**18735**  
Double pole  
**18745**



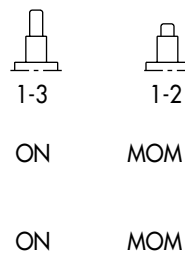
ON      MOM  
ON      MOM



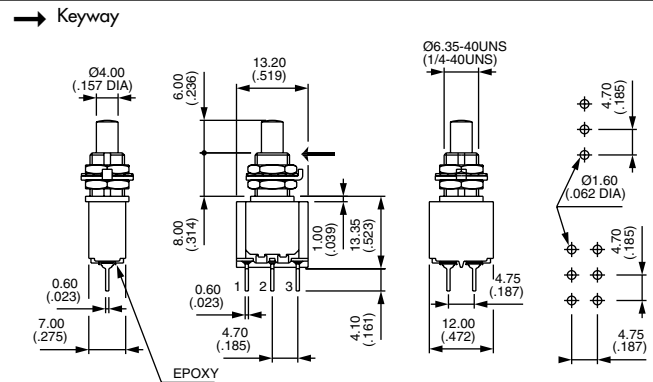
## Straight PC terminals : 18200



Single pole  
**18235**  
Double pole  
**18245**



ON      MOM  
ON      MOM





# 18000 series

Snap-action momentary pushbutton switches

Threaded bushing  $\varnothing 6,35$  (1/4) : 18900 - Snap-in mounting : 18800

## Flatted bushing - straight PC terminals : 18900

→ Flat



Single pole  
**18935**

Double pole  
**18945**



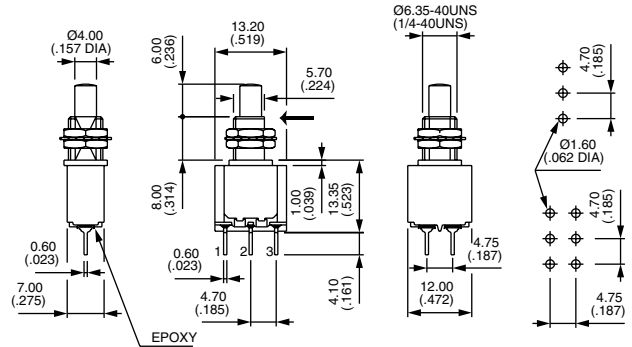
1-3

ON



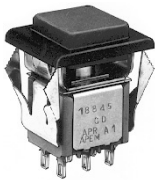
1-2

MOM



## Snap-in mounting - solder lug terminals : 18800

Shown with cap U910 + U1200



Single pole  
**18835**

Double pole  
**18845**



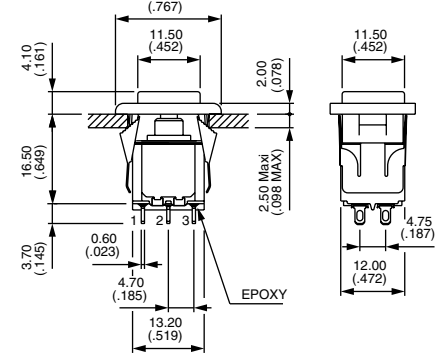
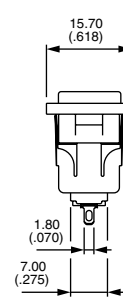
1-3

ON



1-2

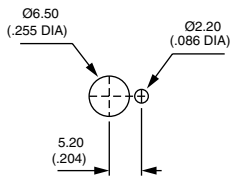
MOM



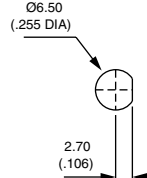
Available with straight PC terminals : see X662 under "Special options".

### PANEL CUT-OUT

18500 - 18200

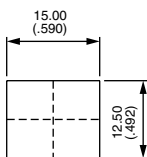


18700 - 18900

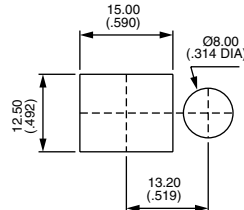


### PANEL CUT-OUT

18800



With bezel U1200



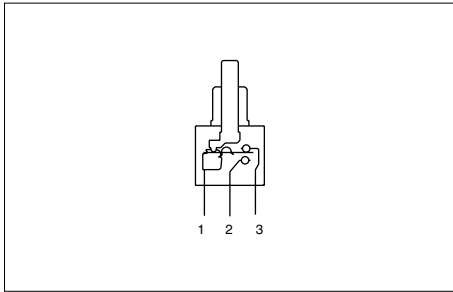
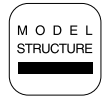
With bezel U1210 for LED

B

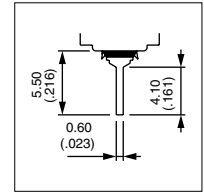
# 18000 series

Snap-action momentary pushbutton switches

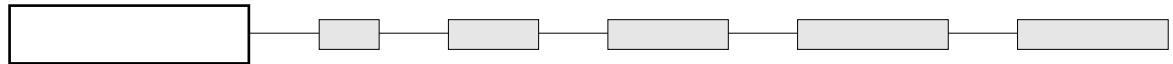
Plain bushing : 18200Y - 18200W - 18200WW



- Straight PC or right angle terminals
- Epoxy sealed terminals standard

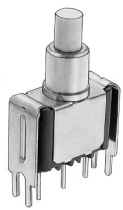


MODEL STRUCTURE

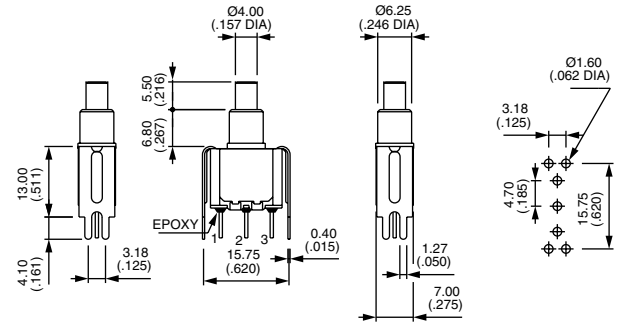


Shown with standard plunger (-3)

## Straight PC terminals - bracket mounting - single pole 18230Y



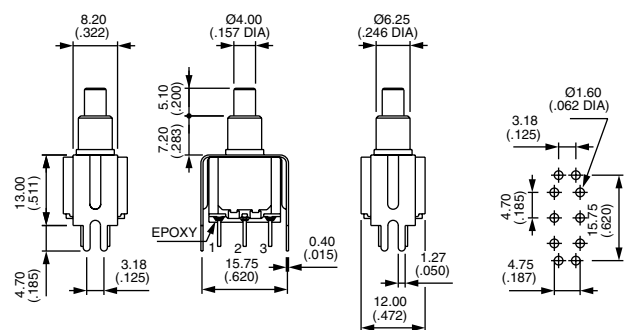
18235Y



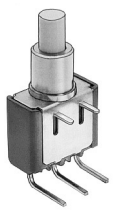
## Straight PC terminals - bracket mounting - double pole 18240Y



18245Y

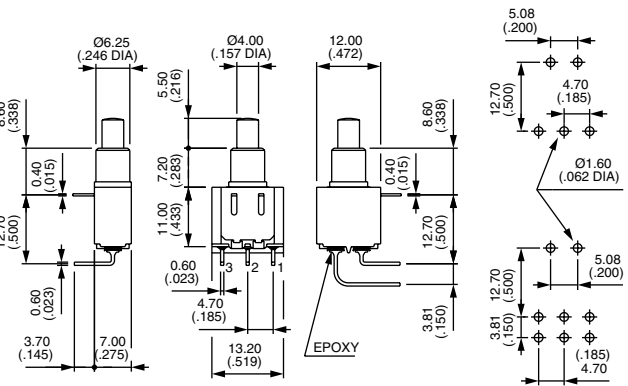


## Right angle terminals - horizontal : 18200W



Single pole  
18235W

Double pole  
18245W

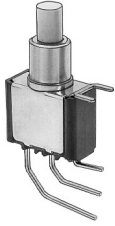




# 18000 series

Snap-action momentary pushbutton switches

## Right angle terminals - vertical : 18200WW



Single pole  
**18235WW**

Double pole  
**18245WW**



1-3

ON

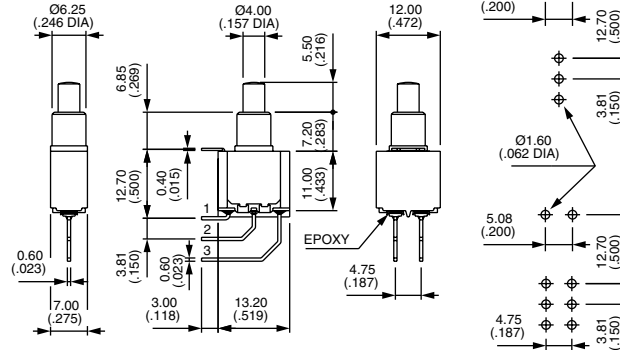


1-2

MOM

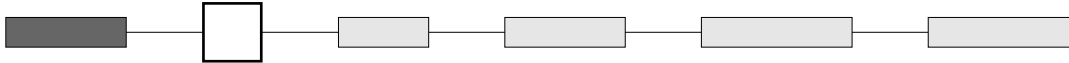
ON

MOM



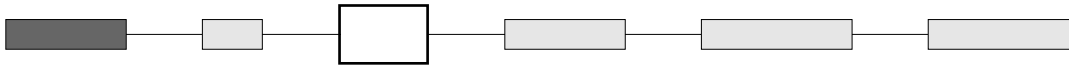
**B**

## CONTACT MATERIALS

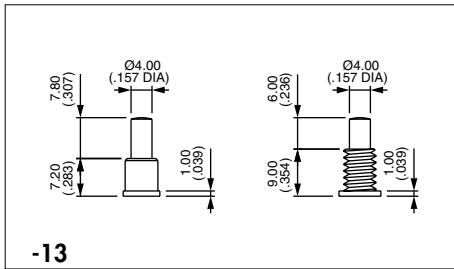


**AD** Silver, gold plated  
**CD** Brass, gold plated

## PLUNGERS

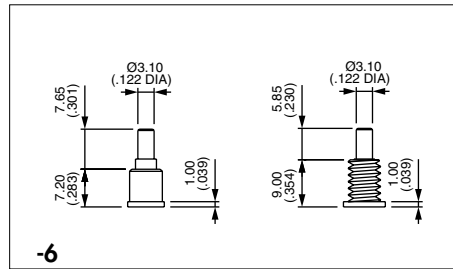


Dash compulsory before plunger code.



**-13**

Ø 4 (.157) - standard with threaded bushing

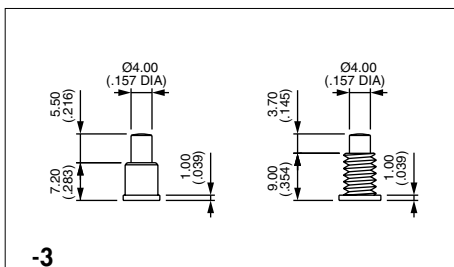


**-6**

Ø 3,1 (.122)

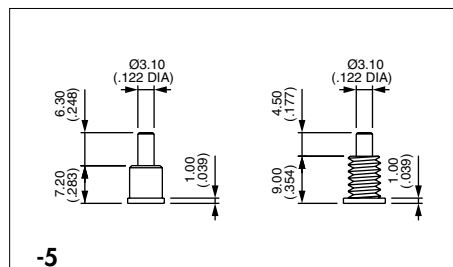


If plunger not specified, we supply former default option -13.



**-3**

Ø 4 (.157) - standard with plain bushing



**-5**

Ø 3,1 (.122)

# 18000 series

Snap-action momentary pushbutton switches

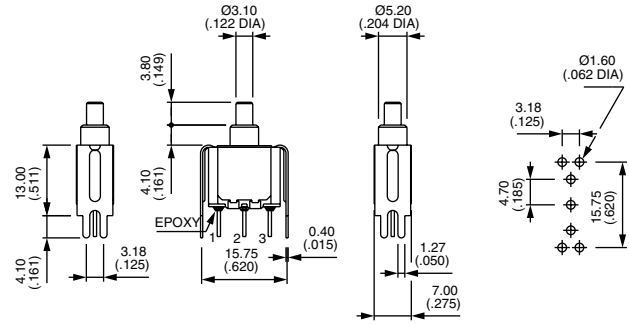


## SPECIAL OPTIONS

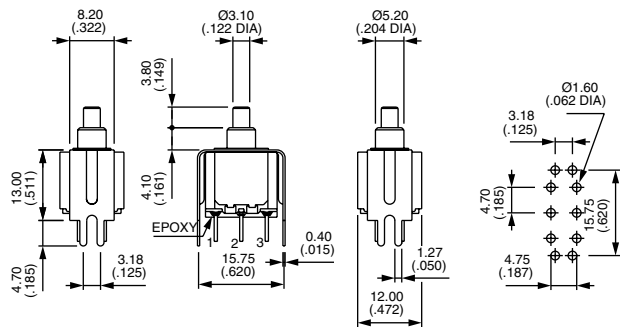
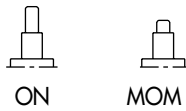


**X624** Straight PC terminals - bracket mounting - **with shorter bushing and plunger**

Single pole  
18235Y -2X624

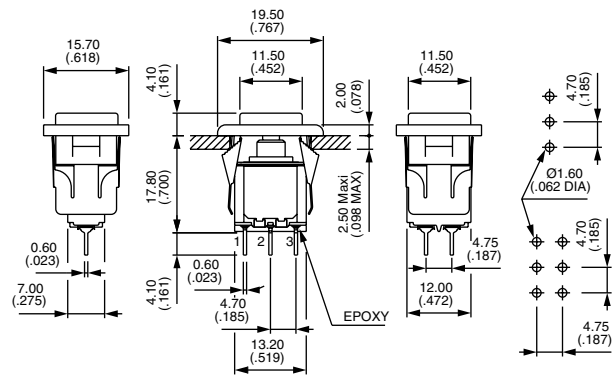
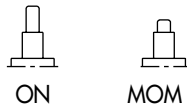


Double pole  
18245Y -2X624

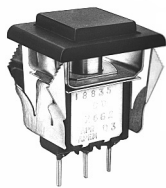
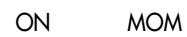


**X662** Snap-in mounting - straight PC terminals

Single pole  
18835 X662



Double pole  
18845 X662



B





# 18000 series

Snap-action momentary pushbutton switches

## SPECIAL OPTIONS (continued)

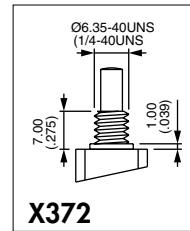


**X371** Plain bushing  $\varnothing$  6,25 mm (.246) (instead of standard threaded bushing).

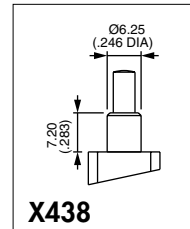
**X372** Shorter threaded bushing  $\varnothing$  6,35 (1/4). Height 7 mm (.274).

**X386** Threaded bushing  $\varnothing$  6,35 mm (1/4) to replace plain bushing on models W - WW and Y.

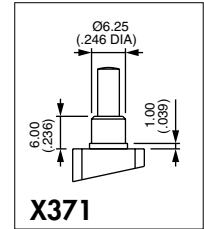
**X438** Plain bushing  $\varnothing$  6,25 mm (.246). Height 7,2 mm (.283) - without shoulder.



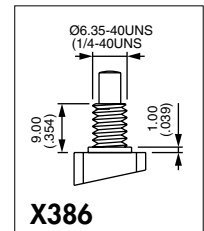
**X372**



**X438**



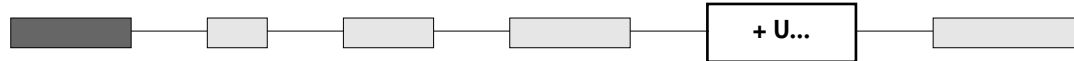
**X371**



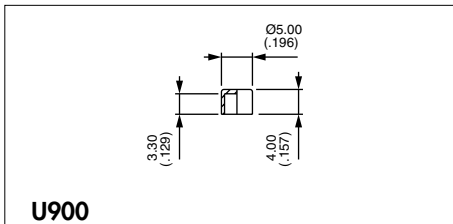
**X386**

**B**

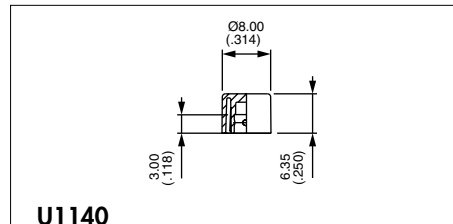
## CAPS



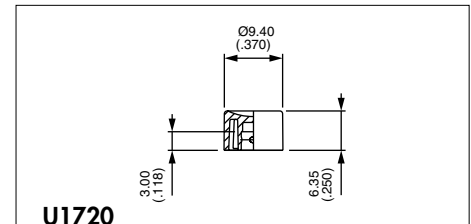
Caps for  $\varnothing$  4 (.157) plungers (-13, -3)



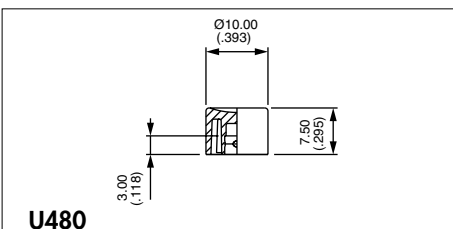
**U900**



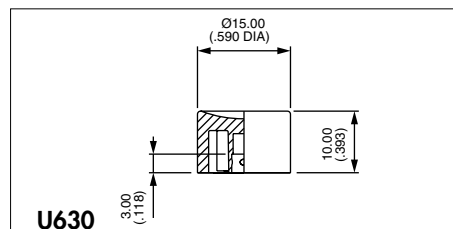
**U1140**



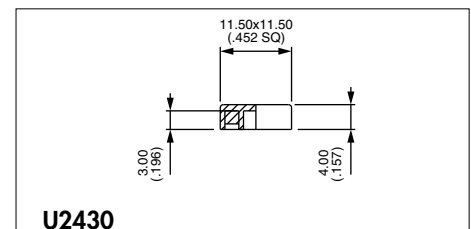
**U1720**



**U480**

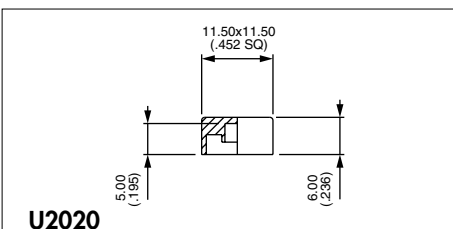


**U630**



**U2430**

Square



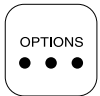
**U2020**

Square

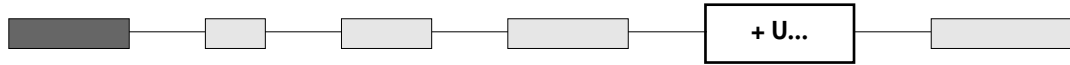
Cap colours			
Replace last "0" by number			
1	blue	5	yellow
1/4	dark blue	6	red
2	black	7	ivory
3	green	7/1	white
4	grey	9	orange

# 18000 series

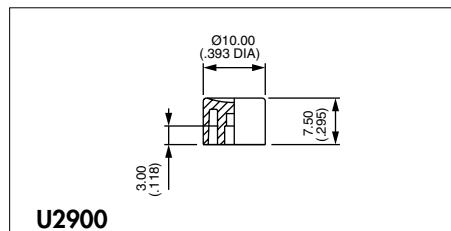
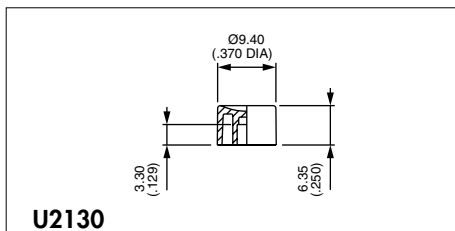
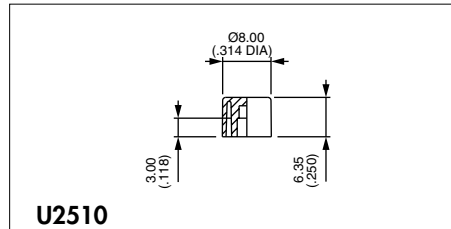
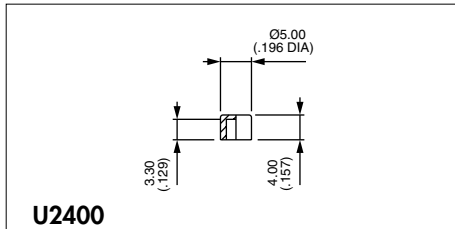
Snap-action momentary pushbutton switches



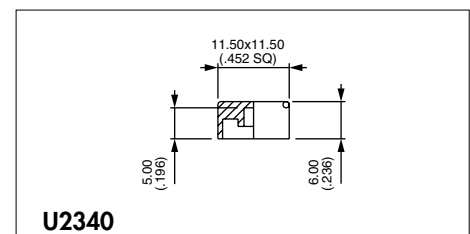
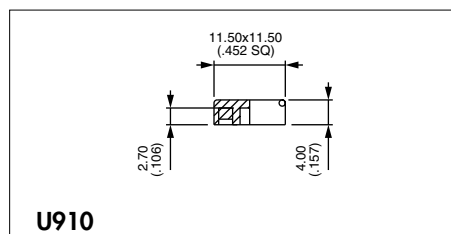
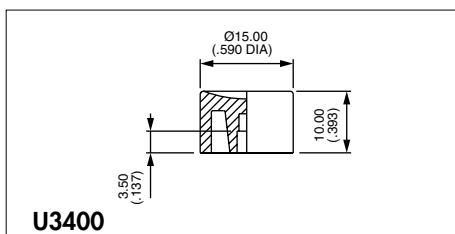
## CAPS (continued)



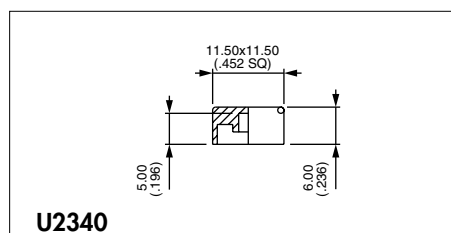
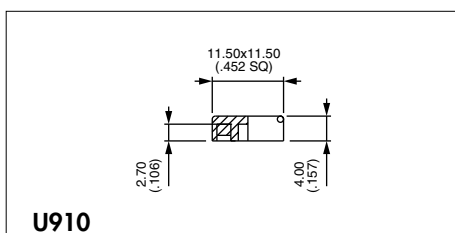
### Caps for Ø 3,1 (.122) plungers (-5, -6)



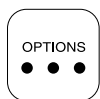
Cap colours	
Replace "0" by number	
1	blue
1/4	dark blue
2	black
3	green
4	grey
5	yellow
6	red
7	ivory
7/1	white
9	orange



### Caps for 18800 and 18800X662 models



B



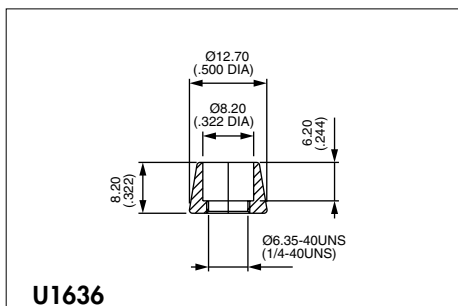
# 18000 series

Snap-action momentary pushbutton switches

## DRESS NUTS

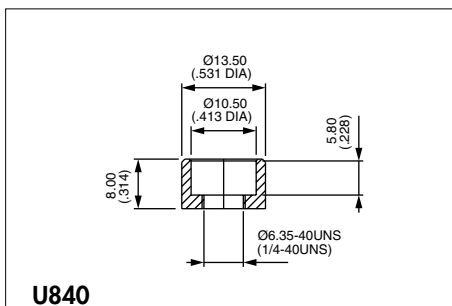
For models with threaded bushing (18500 - 18700 - 18200 - 18900)

Chrome plated - Order separately.



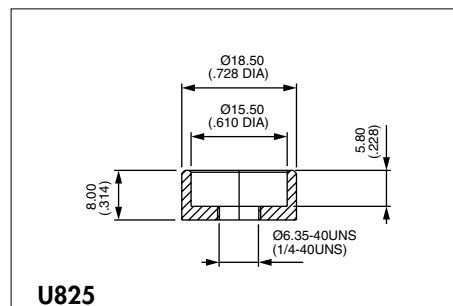
**U1636**

For caps U1140 and U2510



**U840**

For cap U480 and U2900

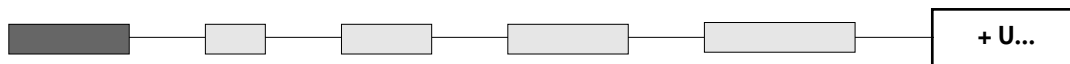


**U825**

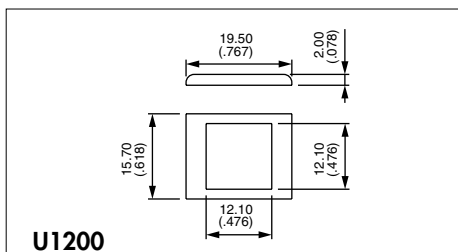
For caps U630 and U3400

**B**

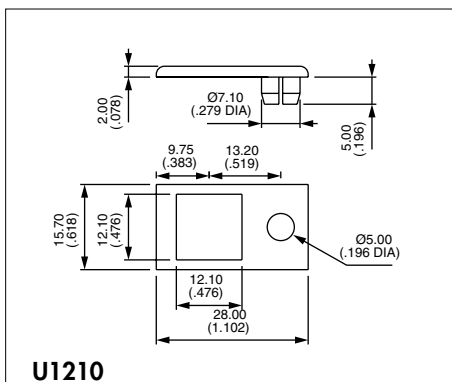
## BEZELS



For snap-in models (18800 - 18800X662)



**U1200**

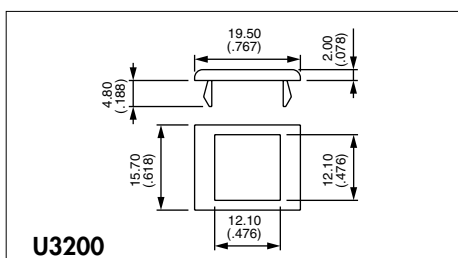


**U1210**

For LED Ø 5 - not supplied

Bezel colours	
Replace last "0" by number	
1	blue
1/4	dark blue
2	black
3	green
4	grey
5	yellow
6	red
7	ivory
7/1	white
9	orange

For bracket mounting models (18200Y & 18200YX624)



**U3200**

**STANDARD PANEL MOUNTING**

Panel thickness with bezel : 1 mm (.039) to 2,5 mm (.098)

**18800 + U910 + U1200**

**18800 + U910 + U1210**

# 18000 series

Snap-action momentary pushbutton switches

For high currents

Tactile feedback

B

## ELECTRICAL SPECIFICATIONS

- Max. current/voltage rating with resistive load :  
3A 250VAC - 6A 125VAC - 7A 30VDC
- Initial contact resistance : 20 m $\Omega$  max. at 0,1A 3VDC
- Insulation resistance : 200.000 M $\Omega$  min. between terminals and frame
- Dielectric strength : 1.500 Vrms 50 Hz min.
- Electrical life : 60.000 cycles at full load

## GENERAL SPECIFICATIONS

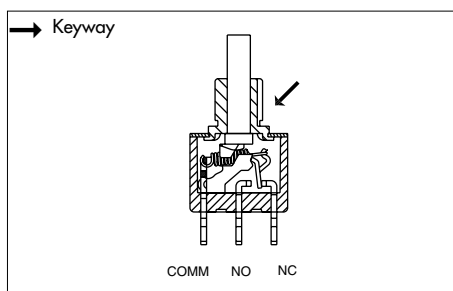
- Travel : 0,90 mm (.035) approx.
- Operating temperature :  
-30°C to +85°C

## MATERIALS

- Case : diallyphthalate (DAP)
- Actuator : glass filled polyester
- Bushing : brass, nickel plated
- Housing : stainless steel
- Contacts : silver
- Terminal seal : epoxy

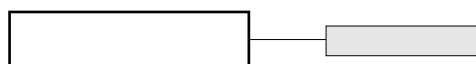
# 18000 series

Snap-action momentary pushbutton switches



- Threaded bushing  $\varnothing 6,35$  (1/4)
- Solder lug terminals
- Epoxy sealed terminals

MODEL STRUCTURE



B

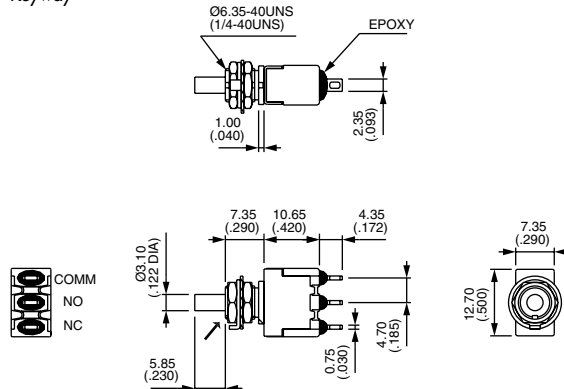
## Single pole



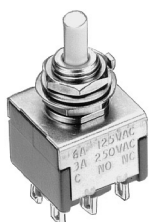
18635A



→ Keyway



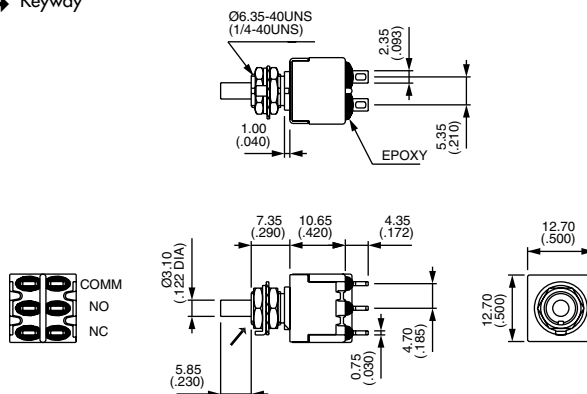
## Double pole



18645A



→ Keyway



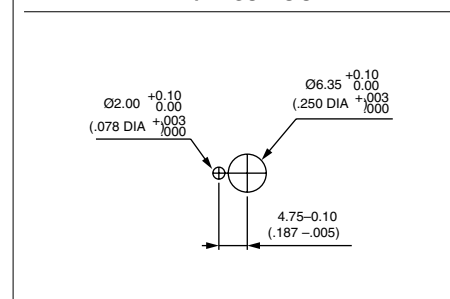
## CAPS



Round	
U2400	$\varnothing 5$ (.196)
U2510	$\varnothing 8$ (.314)
U2130	$\varnothing 9,4$ (.370)
U2900	$\varnothing 10$ (.393)
U3400	$\varnothing 15$ (.590)

Square	
U910	Height 4 (.157)
U2340	Height 6 (.236)

## PANEL CUT-OUT



For cap dimensions, see "Caps for  $\varnothing 3,1$  (.122) plungers" on the preceding pages.