

SA系列30A ~ 350A多极连接器 SA Series Multipole Power Connectors



Multipole Power Connectors



特征

- 平扫式接触系统
可在大电流下保持最小的接触电阻，在断开过程中产生的擦拭动作可清洁接触件表面
- 结构式颜色编码
避免两个带有不同电压编码颜色的胶壳误插
- 互换无公母设计
简易组装要求，减少元件库存
- 灵活应用
同时满足板对线，线对线的连接方式；

应用领域

本系列产品通过了严格的UL、CUL、CCC认证，可在物流通信、电动工具、UPS、移动产品、医疗设备、AC/DC电源等广大行业及全球大部分地区安全使用。

Features

- Flat wiping contact system
Minimal contact resistance at high current, wiping action cleans contact surface during connection/disconnection
- Structured color-coded
prevents accidental mating of components operating at different voltage levels
- Interchangeable genderless design
Makes assembly easy and reduces stock
- Flexible application
Meet cable to cable connection and cable to board requirement

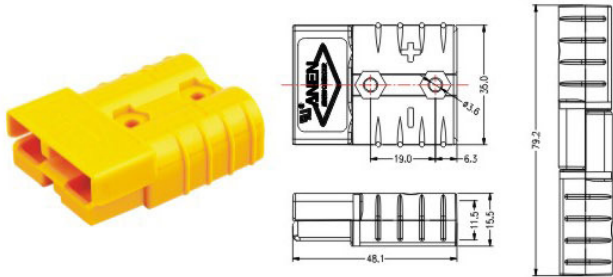
Applications

This series of products meets strict UL、CUL、CCC，certification which can be used safety in logistics communication，Power-driven tools、UPS systems Electric vehicles .medical equipment AC/DC power etc, of widely industry and the most area around world.

技术参数 Technical Parameters

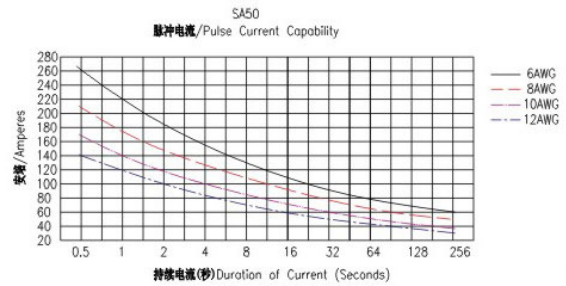
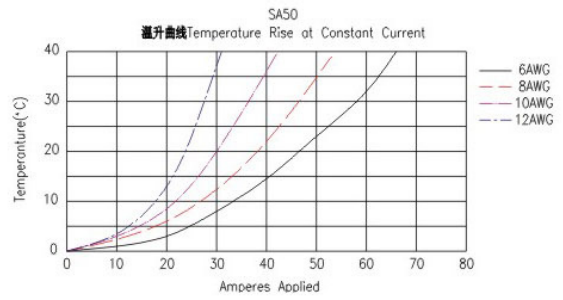
额定电流 (安培) / Rated current (Amperes)	50A
额定电压 (伏特) / Rated voltage (Volts)	600V
连接线径尺寸 (AWG) / Contact Barrel Wire Size (AWG)	06~12AWG
接触材料 / Contact material	铜、镀银 Copper Plate with silver
绝缘材料 / Insulation material	PC
防火等级 / Flammability	UL94 V-0
寿命/Life a.空载状态 (连接/断开次) Without load (Contact/Disconnect Cycles) b.负载状态 (热插拔250&120V) With Load (Hot Plug 250 Cycles & 120V)	To 10,000 40A
接触电阻(微欧) / average Contact Resistance(micro-ohms)	<500
绝缘电阻 / Insulation Resistance	5000MΩ
平均插拔力(牛顿) / average. Connection\disconnect(N)	55N
端子保持力Connector holding force (lbf)	250N Min
环境温度 (°C) / Environment Temperature (°C)	-20°C...+75°C

I 胶壳 / Housing

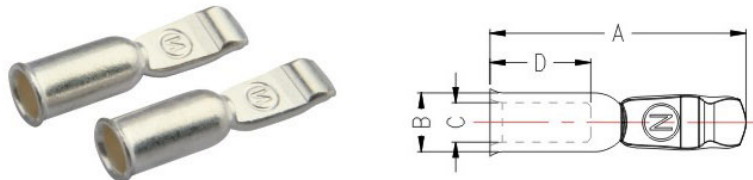


零件料号 Part Number	胶壳颜色 Housing Color
SA50B0-H	黑色Black
SA50B1-H	棕色Brown
SA50B2-H	红色Red
SA50B3-H	橙色Orange
SA50B4-H	黄色Yellow
SA50B5-H	绿色Green
SA50B6-H	蓝色Blue
SA50B7-H	紫色Purple
SA50B8-H	灰色Gray
SA50B9-H	白色White

I 温升图/ Temperature rise charts

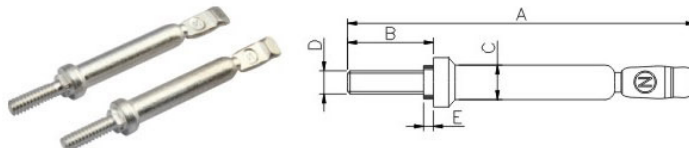


I 端子 / Terminal



零件料号 Part Number	-A- (mm)	-B- (mm)	-C- (mm)	-D- (mm)	线径 / Wire
PA5900-T	30.5	7.0	5.6	12.0	6 AWG
PA5952-T	30.5	7.0	4.7	12.0	8 AWG
PA5915-T	30.5	7.0	3.5	12.0	10&12AWG

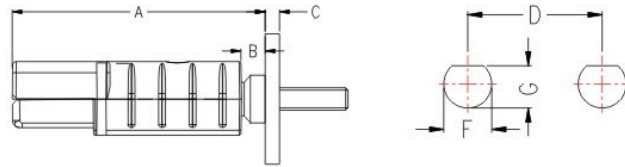
I 连接PCB端子 PCB Terminal contacts



零件料号 Part Number	-A- (mm)	-B- (mm)	-C- (mm)	-D- (mm)	-E (mm)
50/75 BBS	70.5	17.4	7.0	#10-24 THD.	2.0

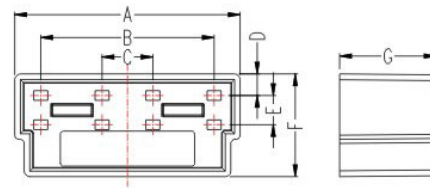
Multipole Power Connectors

安装尺寸 Mounting Dimensions



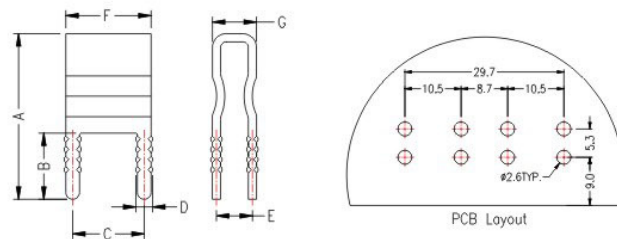
型号/Type	-A- (mm)	-B- (mm)	-C- (mm)	-D- (mm)	-F-(mm)	-G(mm)
50/75 BBS	53.3	5.1	3.0~12.7	19.1	6.8	6.2

板端胶壳 Board Housings



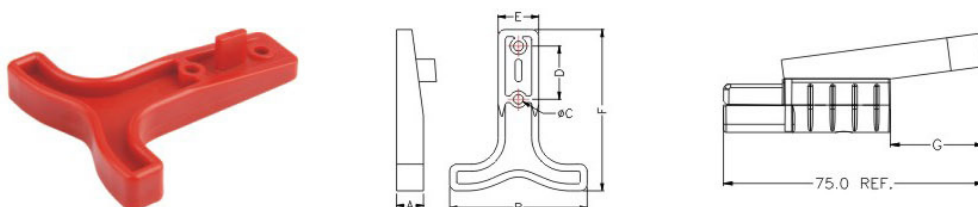
零件料号Part Number	-A- (mm)	-B- (mm)	-C- (mm)	-D- (mm)	-E-(mm)	-F-(mm)	-G(mm)
SA-HSG-00	38.6	29.7	8.7	3.7	5.3	17.6	16.5

连接PCB端子 / PCB Terminal Contacts



零件料号Part Number	-A- (mm)	-B- (mm)	-C- (mm)	-D- (mm)	-E-(mm)	-F-(mm)	-G(mm)
PC5933-T	24.3	9.7	10.5	2.5	5.3	12.5	6.5

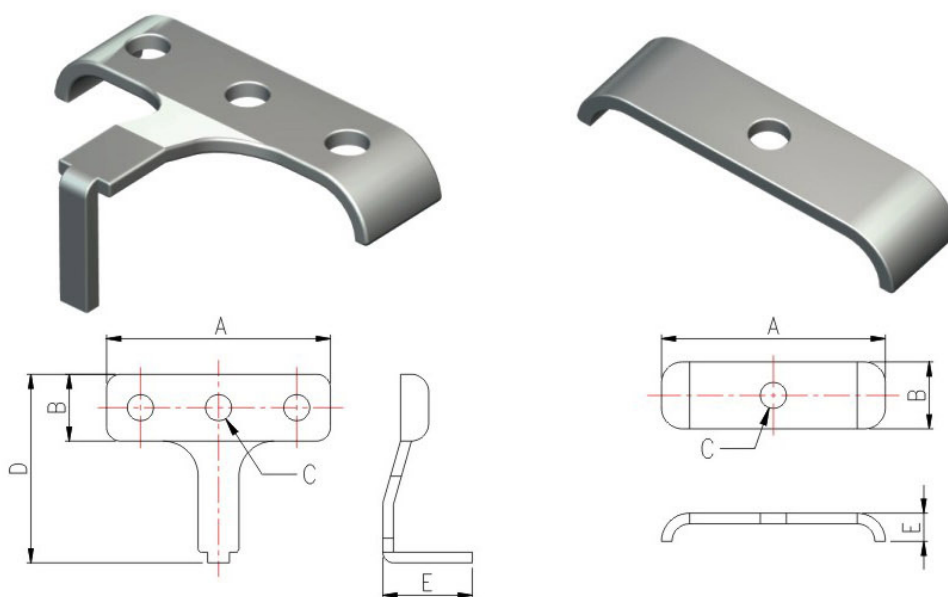
I 拉手/Handle



零件料号P/N	-A- (mm)	-B- (mm)	-C- (mm)	-D- (mm)	-E- (mm)	-F- (mm)	-G- (mm)	Colour
PA112G1-2	9.6	49.1	3.5	19.0	14.5	57.6	26.9	Red
PA112G1-8	9.6	49.1	3.5	19.0	14.5	57.6	26.9	Gray

I 线夹上盖 Wire clamp up cover

I 线夹下盖 Wire clamp under cover



零件料号Part Number	品名Part Name	-A- (mm)	-B- (mm)	-C- (mm)	-D- (mm)	-E (mm)
PA115G3-1	线夹上盖 Wire clamp up cover	31.8	9.5	3.7	26.8	12.7
PA115G3-2	线夹下盖 Wire clamp under cover	31.8	9.5	3.7	N/A	4.2