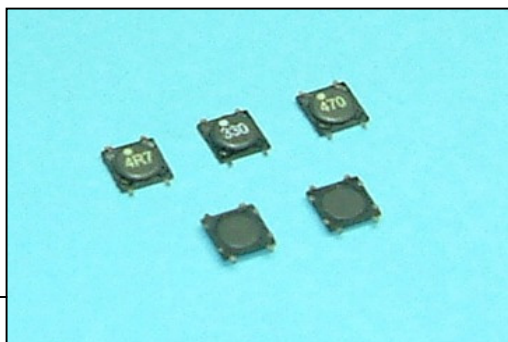


## Low Profile SMD Type Power Inductor / ( PIS5010C / PIS5012C ) TYPE

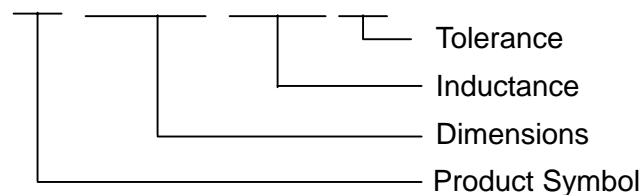


Applications :

DC to DC converters for LCD panels, Digital camera and PDA.

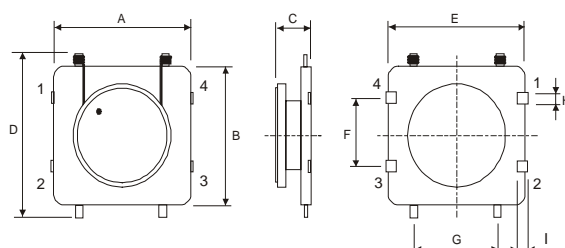
### 1. Product Identification

PIS



### 2. Shape and Dimension

( PIS5010C / PIS5012C )



Dimensions in mm

TYPE	A ±0.1	B ±0.1	C	D (max)	E ±0.1	F ±0.1	G	H ±0.1	I ±0.1
PIS5010C	5.0	5.0	1.0	6.4	5.1	3.0	3.4	0.4	0.4
PIS5012C	5.0	5.0	1.2	6.4	5.1	3.0	3.4	0.4	0.4

### 3. Electrical Characteristics ( PIS5010C )

Part No.	INDUCTANCE ( uH )	TEST FREQ. ( KHz )	DC Resonant ( ) Max.	Rate Current ( A ) Max
PIS5010C-2R2M	2.2±20 %	100	0.21	1.82
PIS5010C-3R3M	3.3±20 %	100	0.24	1.65
PIS5010C-4R7M	4.7±20 %	100	0.30	1.37
PIS5010C-6R8M	6.8±20 %	100	0.44	1.11
PIS5010C-100M	10±20 %	100	0.62	0.97
PIS5010C-150M	15±20 %	100	0.91	0.79
PIS5010C-220M	22±20 %	100	1.17	0.68
PIS5010C-330M	33±20 %	100	1.79	0.55
PIS5010C-470M	47±20 %	100	2.47	0.47

## Electrical Characteristics ( PIS5012C )

Part No.	INDUCTANCE ( uH )	TEST FREQ. (KHz)	DC Resonant ( ) Max.	Rate Current ( A ) Max
PIS5012C-2R2M	2.2±20%	100	0.21	2.37
PIS5012C-3R3M	3.3±20%	100	0.24	2.11
PIS5012C-4R7M	4.7±20%	100	0.30	1.80
PIS5012C-6R8M	6.8±20%	100	0.43	1.42
PIS5012C-100M	10±20%	100	0.52	1.23
PIS5012C-150M	15±20%	100	0.68	1.05
PIS5012C-220M	22±20%	100	1.00	0.86
PIS5012C-330M	33±20%	100	1.53	0.68
PIS5012C-470M	47±20%	100	2.27	0.59