

G9系列微动开关订货型号指引  
G9 Series Micro Switch Ordering Instruction

G9	05	150	S	00	D	1	A	AWG-Type (for with Wire type (仅适用于带线型))	AWG Number (For with Wire type (仅适用于带线型))	Wire length 线长
G9系列 Micro-Switch	ENEC/CQC: 0.1A 125/250VAC 48VDC SFD u 25T125	100gf Max. 仅适用于G91 系列/Only for G91 series	Terminal Style 端子类型	Lever Type 操作柄类型	Construction 接触形式	Circuit Code 接触形式	Special Designator 特别设计代码	F 22#	UL11007	标准长度: 50mm Standard length: 50mm
G9系列 微动开关	ENEC/CQC: 6A 125/250VAC u (仅适用于G91) 5A 125/250VAC UL/CUL: 5A 125/250VAC (仅适用于G91) 5A 178HP 125/250VAC (仅适用于G91)	150gf Max. 仅适用于G91 系列/Only for G91 series	直PCB端子 Straight PCB connect (0.6mm wide) 直PCB端子 (0.6mm宽)	Arc Pin Plunger 弧面柱式按掣 (仅适用于 G91)	Dust proof -IP00 防尘型-IP00 不带线	SPDT 单掷单投	Gold Plated Contacts (镀金触点) (仅适用于G91系列)	20#	UL11569	
	ENEC/CQC: 100.15A 125/250VAC u UL/CUL: 10.1A 174HP 125/250VAC	200gf Max.	右側面PCB端子 Right side PCB connect (仅适用于G91)	Spherical Pin 球面柱式按掣	Water proof -IP67 Which head wires 防水型-IP67 带引接线	SPST-NC 单掷单投	Special use for high DC voltage 高电压应用。 (仅适用于G91系列)	24#	UL1430	
		250gf Max. 仅适用于G91 系列/Only for G91 series	左側面PCB端子 Left side PCB connect (仅适用于G91)	Short Straight Lever 17.7mm 短直柄 17.7mm		SPST-NO 单掷单投	General 通用型 (温度等级/ Temperature grade G9: 25T120 G91: 40T125)	28#	UL1330	
			宽直PCB端子 Wide Straight PCB connect (1.3mm wide) (仅适用于G91)	Long Straight Lever 25.8mm 长直柄 25.8mm			Special use for high DC voltage 高电压应用。 (仅适用于G91系列)	30#	AVSS	
			窄直PCB端子 Narrow Straight PCB connect (0.6mm wide) (仅适用于G91)	Small Simulated Roller Lever 18.9mm(0.75") 小型模拟滚轮手 柄 18.9mm			Temperature grade 40T125 温度等级 (仅适用于G91系列)	32#	UL3266	
			带线型端子 Cable-side ext (50mm) (仅适用于G91/Not apply to G91)	Roller Lever 15.7mm(0.62") 带滚轮手柄 15.7mm			Other 其他	34#	UL1332	
			对插型端子 Opposite plunger type (50mm长) (仅适用于G91/Not apply to G91)	Longest Straight Lever 56.2mm (2.25") 最长直柄 56.2mm					UL1015	
			对插型端子 Opposite plunger type (50mm长) (仅适用于G91/Not apply to G91)	Other 其他						

G9系列微动开关订货型号指引  
G9 Series Micro Switch Ordering Instruction

G9系列 端子类、操作柄类型、安装孔位、接触形式、外形介绍  
Terminal Style, Lever Type, Mounting Hole, Contact, Shape

■端子类型/Terminal Type

S#: Solder terminals 焊接端子	E#: Lead wires downwards (500mm length) 导线型, 底面出线, 线长500mm
P#: Straight PCB terminals 直PCB端子	F#: Lead wires on right side (Opposite Pin plunger side), 500mm length. 导线型, 右面(按掣相对侧)出线, 线长500mm.
D#: 110# Quick Connect terminals; 2.8mmX0.6mm 110#快速连接端子2.8mmX0.6mm	G#: Lead wires on left side (Pin plunger side), 500mm length. 导线型, 左面(按掣侧)出线, 线长500mm

■操作柄类型/Lever Type

00#: Pin Plunger 柱式按掣	01#: Short straight lever 17.7mm 短直柄 17.7mm

## 操作柄类型/Lever Type

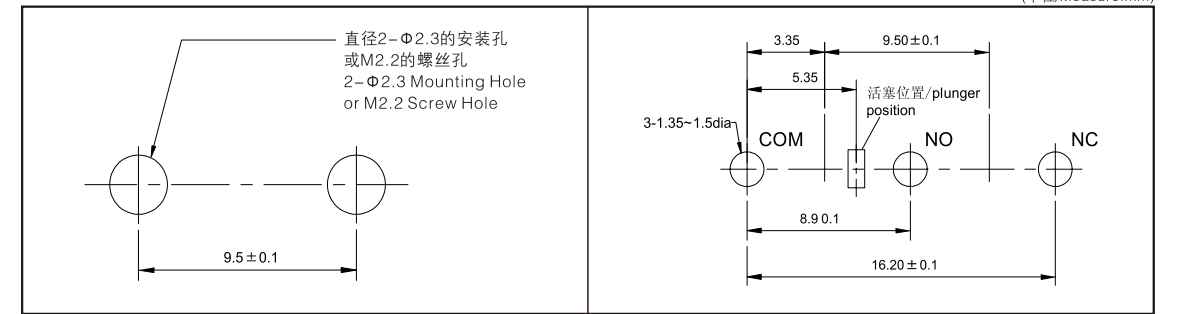
<p>02#: Standard straight lever 19.7mm 标准直手柄19.7mm</p>	<p>03#: Long straight lever, 25.8mm 长直柄25.8mm</p>
<p>05#: simulated Roller lever 18.9mm 小型模拟滚轮手柄18.9mm</p>	<p>06#: Roller lever 15.7mm 滚轮手柄 15.7mm</p>

## IP grade / IP 等级

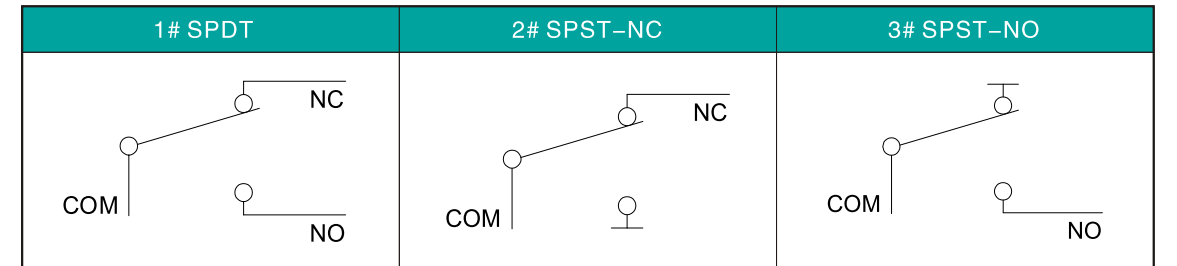
<p><b>D#:</b> Plunger and Body are Water proof(IP67); terminals does are water proof(IP00), without lead wires 按挚及开关本体防尘防水(IP67), 端子无防尘防水设计(IP00)</p>
<p><b>W#:</b> Water proof (IP67) with lead wires 防水型IP67带引出线.</p>

## 安装孔尺寸/Mounting Hole Dimensions

## PCB端子安装孔 Mounting Hole of PCB Terminal



## 接触形式图/Contact Configuration



## 外形尺寸和操作特性/Dimensions and Operating Characteristics

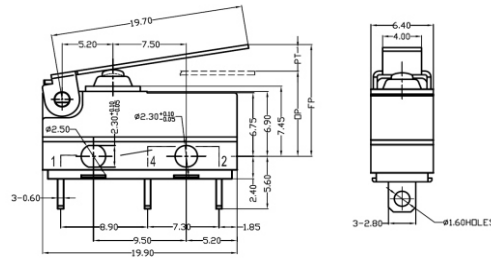
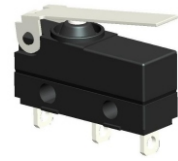
### ◆G9□□-□□□S00D1

OF Max. (gf)	RF Min. (gf)	PT Max. (mm)	OT Min. (mm)	DT Max. (mm)	FP Max. (mm)	OP (mm)
-250	150	30	1.2	0.6	0.2	9.4
-200	200	50	1.2	0.6	0.2	9.4

### ◆G9□□-□□□S01D1

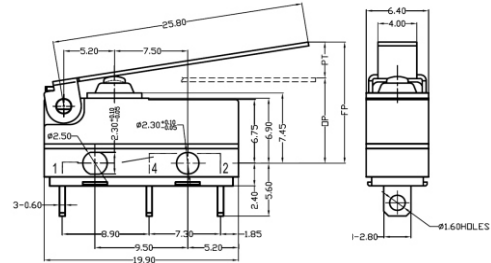
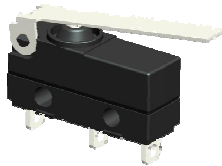
OF Max. (gf)	RF Min. (gf)	PT Max. (mm)	OT Min. (mm)	DT Max. (mm)	FP Max. (mm)	OP (mm)
-150	50	8.0	4.3	0.6	0.7	12.0
-200	90	15	4.3	0.6	0.7	12.0

## ◆G9□□-□□□S02D1



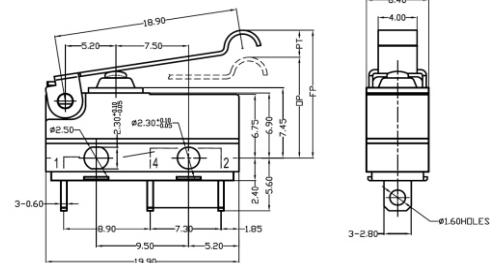
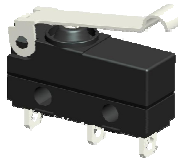
OF Max. (gf)	RF Min. (gf)	PT Max. (mm)	OT Min. (mm)	DT Max. (mm)	FP Max. (mm)	OP (mm)	
-150	50	6	4.8	0.6	0.2	12.5	8.8±1.3
-200	75	13	4.8	0.6	0.2	12.5	8.8±1.3

## ◆G9□□-□□□S03D1



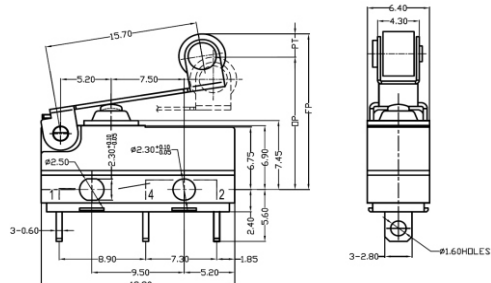
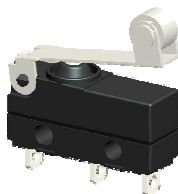
OF Max. (gf)	RF Min. (gf)	PT Max. (mm)	OT Min. (mm)	DT Max. (mm)	FP Max. (mm)	OP (mm)	
-150	40	5	6.3	1.0	1.0	13.5	8.8±1.8
-200	55	8	6.3	1.0	1.0	13.5	8.8±1.8

## ◆G9□□-□□□S05D1



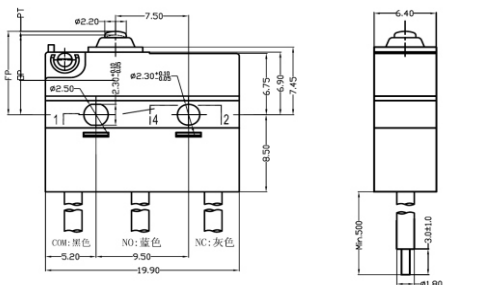
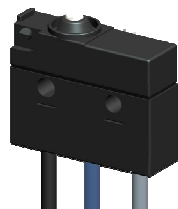
OF Max. (gf)	RF Min. (gf)	PT Max. (mm)	OT Min. (mm)	DT Max. (mm)	FP Max. (mm)	OP (mm)	
-150	50	6	4.6	0.7	0.8	15.5	11.8±1.5
-200	75	12	4.6	0.7	0.8	15.5	11.8±1.5

## ◆G9□□-□□□S06D1



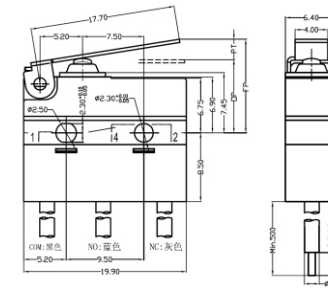
OF Max. (gf)	RF Min. (gf)	PT Max. (mm)	OT Min. (mm)	DT Max. (mm)	FP Max. (mm)	OP (mm)	
-150	65	10	4.3	0.6	0.7	17.5	14.5±1.1
-200	85	15	4.3	0.6	0.7	17.5	14.5±1.1

## ◆G9□□-□□□E00W1



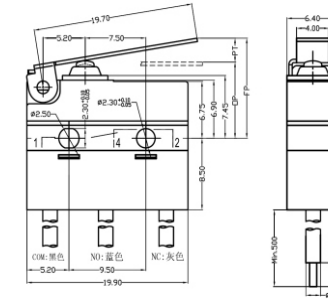
OF Max. (gf)	RF Min. (gf)	PT Max. (mm)	OT Min. (mm)	DT Max. (mm)	FP Max. (mm)	OP (mm)	
-150	150	30	1.2	0.6	0.2	9.4	8.4±0.3
-300	300	70	1.2	0.6	0.2	9.4	8.4±0.3

## ◆G9□□-□□□E01W1



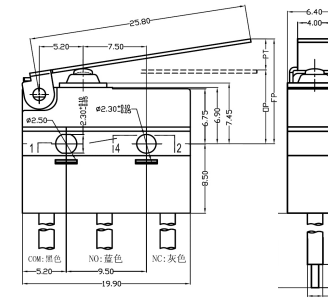
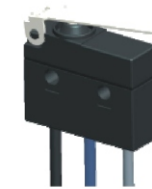
OF Max. (gf)	RF Min. (gf)	PT Max. (mm)	OT Min. (mm)	DT Max. (mm)	FP Max. (mm)	OP (mm)	
-150	50	8	4.3	0.6	0.7	12.0	8.8±1.2
-300	105	20	4.3	0.6	0.7	12.0	8.8±1.2

## ◆G9□□-□□□E02W1



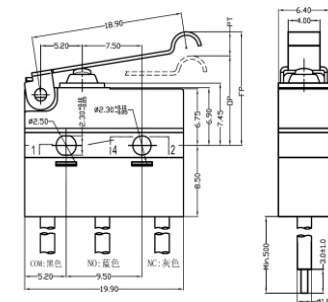
OF Max. (gf)	RF Min. (gf)	PT Max. (mm)	OT Min. (mm)	DT Max. (mm)	FP Max. (mm)	OP (mm)	
-150	50	6	4.8	0.7	0.8	12.5	8.8±1.3
-300	95	18	4.8	0.7	0.8	12.5	8.8±1.3

## ◆G9□□-□□□E03W1



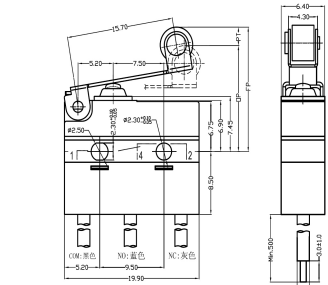
OF Max. (gf)	RF Min. (gf)	PT Max. (mm)	OT Min. (mm)	DT Max. (mm)	FP Max. (mm)	OP (mm)	
-150	40	5	6.3	1.0	1.0	13.5	8.8±1.8
-300	75	13	6.3	1.0	1.0	13.5	8.8±1.8

## ◆G9□□-□□□E05W1



OF Max. (gf)	RF Min. (gf)	PT Max. (mm)	OT Min. (mm)	DT Max. (mm)	FP Max. (mm)	OP (mm)	
-150	50	6	4.6	0.7	0.8	15.5	11.8±1.5
-300	95	18	4.6	0.7	0.8	15.5	11.8±1.5

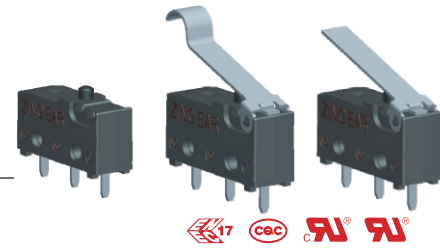
## ◆G9□□-□□□E06W1



OF Max. (gf)	RF Min. (gf)	PT Max. (mm)	OT Min. (mm)	DT Max. (mm)	FP Max. (mm)	OP (mm)	
-150	65	10	4.3	0.6	0.7	17.5	14.5±1.1
-300	110	25	4.3	0.6	0.7	17.5	14.5±1.1

## G9系列/Series-G91

小型微动开关  
Subminiature Micro Switch



### 特点/Features

- ◆ 体型小巧, 结构紧凑
- ◆ 长寿命, 高可靠性
- ◆ 端子种类齐全
- ◆ 配备各种形式操作柄
- ◆ 广泛应用于家用及工业控制等领域
- Small Compact Size
- Long Life, High Reliability
- Vareity of Terminals and Levers
- Widely Used in Auto, Appliance and Other Industry Control

### 应用/Application

- ◆ 汽车/Auto
- ◆ 电话/Phone
- ◆ 空调/Air-Conditioner
- ◆ 计算机/Computer
- ◆ 报警器/Alarm
- ◆ 计算器/Timer
- ◆ 混合器与切肉刀/Mixer&Meat Grinder
- ◆ 传真机/Fax Machine
- ◆ 钱币分类机/Money Sorter
- ◆ 玩具汽车/Toy Car

### 特性参数/Parameters:

额定值/Rating	P1	ENEC/UL:0.1A 125/250V 48VDC 触点可选镀金/Gold Plated Contact Optional
	05	ENEC:5A 125/250VAC;UL: 5A 1/8HP, 125/250VAC
	10	ENEC:10(1.5)A 125/250VAC;UL:10.1A 1/4HP 125/250VAC
操作频率 Operating Frequency	电气/Electrical	10~30次/分 cycles/minute
	机械/Mechanical	120次/分 cycles/minute
初始接触电阻/Contact Resistance(Initiative)		100mΩ Max
绝缘电阻/Insulation Resistance(at 500VDC)		100MΩ Min
抗电强度/Dielectric Strength		AC 1,000V RMS (50~60Hz)
操作温度/Operating Temperature		-40° C ~ +125° C 或/or -40° C ~ +85° C
保存湿度/Storage Humidity		85% RH Max
寿命/Service Life	电气/Electrical	6,000 ~ 50,000次/cycles(取决于类型/Depend on part number)
	机械/Mechanical	1,000,000次/cycles

### 订货指引 Ordering Instruction

参见第 29 页/Refer to Page 29

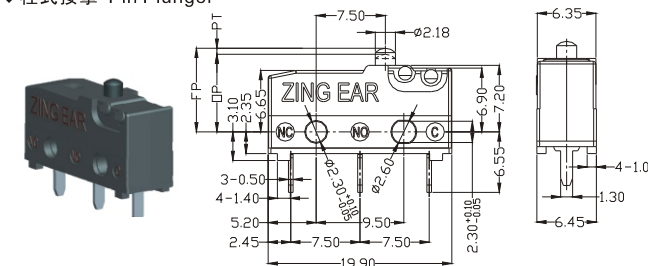
### G91端子类型/Terminal type for G91

(单位/Measure:mm)

S型/Type 焊接端子 Solder Terminals	P型/Type 直PCB端子 (0.6mm宽)/Straight PCB Terminal(0.6mm wider)
D型/type 110#快速连接端子 (2.8×0.5mm) 110# Quick Connect Terminal	R型/Type 右侧面PCB端子/Right Side PCB Terminal
L型/Type 左侧面PCB端子 Left Side PCB Terminal	K型/type 宽直PCB端子 (1.3mm宽) Straight PCB Terminal (1.3mm Wider)

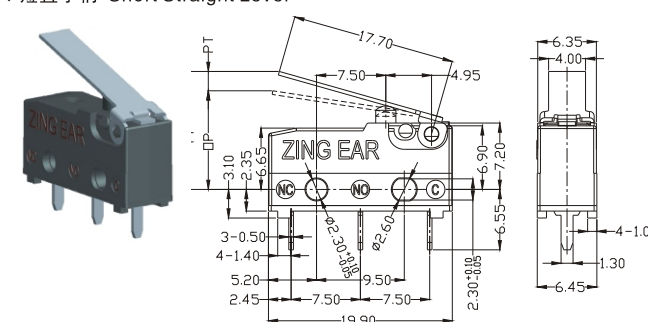
### 外形尺寸和操作特性/Dimensions and Operating Characteristics

#### 柱式按捺 Pin Plunger



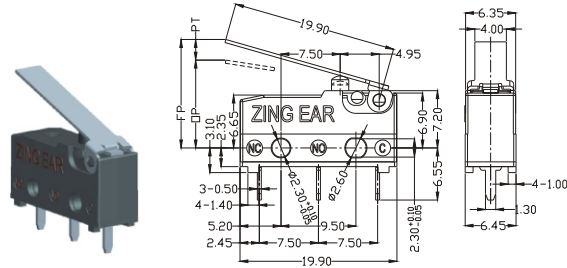
型号 Part Number	操作参数/Parameters							
	OF Max. (N)	RF (gf)	PT Min. (N)	OT (gf)	MD Max. (mm)	OP (mm)		
G91□-100□00D1	1.00	100	0.10	10	1.1	0.6	0.2	8.4±0.3
G91□-150□00D1	1.50	150	0.35	35	1.1	0.6	0.2	8.4±0.3
G91□-250□00D1	2.00	200	0.40	40	1.1	0.6	0.2	8.4±0.3
G91□-300□00D1	3.00	300	0.60	60	1.1	0.6	0.2	8.4±0.3

#### 短直手柄 Short Straight Lever



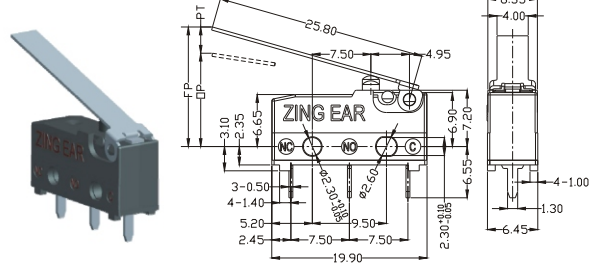
型号 Part Number	操作参数/Parameters							
	OF Max. (N)	RF (gf)	PT Min. (N)	OT (gf)	MD Max. (mm)	OP (mm)		
G91□-100□01D1	0.45	45	0.03	3	4.3	1.2	0.8	10.7±1.3
G91□-150□01D1	0.60	60	0.08	8	4.3	1.2	0.8	10.7±1.3
G91□-250□01D1	0.85	85	0.10	10	4.3	1.2	0.8	10.7±1.3
G91□-300□01D1	1.20	120	0.15	15	4.3	1.2	0.8	10.7±1.3

## ◆标准直手柄 Std. Straight Lever



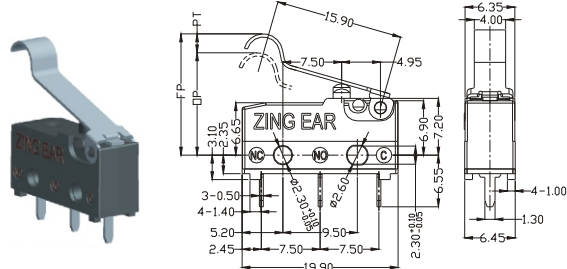
型号 Part Number	操作参数/Parameters						
	OF Max.	RF Min.	PT Max.	OT Min.	MD Max.	OP (mm)	
	(N)	(gf)	(N)	(gf)	(mm)	(mm)	
G91□□-100□02D1	0.40	40	0.02	2	4.8	1.2	11.1±1.5
G91□□-150□02D1	0.50	50	0.06	6	4.8	1.2	11.1±1.5
G91□□-250□02D1	0.75	75	0.08	8	4.8	1.2	11.1±1.5
G91□□-300□02D1	1.10	110	0.12	12	4.8	1.2	11.1±1.5

## ◆长直手柄 Long Straight Lever



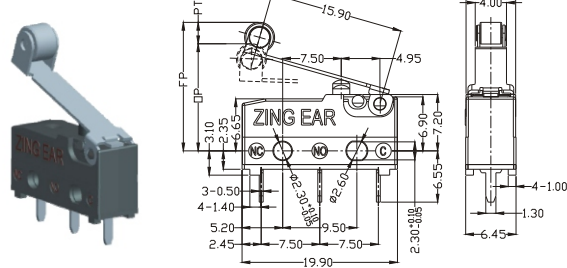
型号 Part Number	操作参数/Parameters						
	OF Max.	RF Min.	PT Max.	OT Min.	MD Max.	OP (mm)	
	(N)	(gf)	(N)	(gf)	(mm)	(mm)	
G91□□-100□03D1	0.35	35	0.01	1	6.3	1.5	12.0±1.8
G91□□-150□03D1	0.40	40	0.04	4	6.3	1.5	12.0±1.8
G91□□-250□03D1	0.65	65	0.06	6	6.3	1.5	12.0±1.8
G91□□-300□03D1	0.90	90	0.10	10	6.3	1.5	12.0±1.8

## ◆短模拟滚轮手柄 Short Std. Simulated Roller Lever



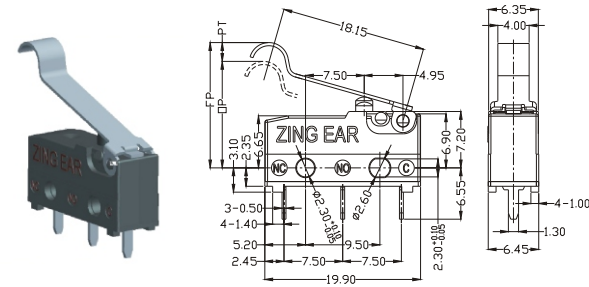
型号 Part Number	操作参数/Parameters						
	OF Max.	RF Min.	PT Max.	OT Min.	MD Max.	OP (mm)	
	(N)	(gf)	(N)	(gf)	(mm)	(mm)	
G91□□-100□05D1	0.50	50	0.03	3	4.3	1.0	16.0±1.3
G91□□-150□05D1	0.65	65	0.08	8	4.3	1.0	16.0±1.3
G91□□-250□05D1	0.95	95	0.12	12	4.3	1.0	16.0±1.3
G91□□-300□05D1	1.30	130	0.16	16	4.3	1.0	16.0±1.3

## ◆短滚轮手柄 Short Roller Lever



型号 Part Number	操作参数/Parameters						
	OF Max.	RF Min.	PT Max.	OT Min.	MD Max.	OP (mm)	
	(N)	(gf)	(N)	(gf)	(mm)	(mm)	
G91□□-100□06D1	0.50	50	0.03	3	4.3	1.0	15.8±1.3
G91□□-150□06D1	0.65	65	0.08	8	4.3	1.0	15.8±1.3
G91□□-250□06D1	0.95	95	0.12	12	4.3	1.0	15.8±1.3
G91□□-300□06D1	1.30	130	0.16	16	4.3	1.0	15.8±1.3

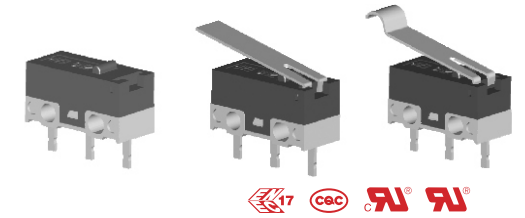
## ◆长模拟滚轮手柄 Long Std. Simulated Roller Lever



型号 Part Number	操作参数/Parameters						
	OF Max.	RF Min.	PT Max.	OT Min.	MD Max.	OP (mm)	
	(N)	(gf)	(N)	(gf)	(mm)	(mm)	
G91□□-100□07D1	0.45	45	0.03	3	4.8	1.3	16.4±1.5
G91□□-150□07D1	0.60	60	0.08	8	4.8	1.3	16.4±1.5
G91□□-250□07D1	0.85	85	0.11	11	4.8	1.3	16.4±1.5
G91□□-300□07D1	1.20	120	0.15	15	4.8	1.3	16.4±1.5

# G10系列/G10 Series

## 超小型微动开关 Subminiature General Micro Switch



### ■特点/Features

- ◆ 体型小巧，结构紧凑
- ◆ 长寿命，高可靠性
- ◆ 端子种类齐全
- ◆ 配备各种形式操作柄
- ◆ 广泛应用于家用及工业控制等领域

- ◆ Small Compact Size
- ◆ Long life and high reliability
- ◆ Variety of terminals
- ◆ Variety of levers optional
- ◆ Widely used in appliance and industry control

### ■应用/Application

- ◆ 无线对讲机/Walkie Talkie
- ◆ 鼠标/Mouse
- ◆ 电切刀/Electric Knife
- ◆ 电动钉书机/Electric Stapler
- ◆ 电话/Telephone
- ◆ 计算器/Calculator
- ◆ 混合器与切肉刀/Mixer & Chopper
- ◆ 电锅/Electric Pan
- ◆ 电池充电器/Battery Charger
- ◆ 录像带卷绕机/Video Cassette Rewinder
- ◆ 无绳电话/Cordless Phone
- ◆ 报警器/Alarm
- ◆ 测试器/Tester Machine

### ■特性参数/Parameters:

额定值/Rating	P1	0.1A 48VDC/125VAC ( 可选镀金Gold plated optional )
	03	1A/3A 125VAC
操作频率 Operating Frequency	电气/Electrical	10~30次/分 cycles/minute
	机械/Mechanical	120次/分 cycles/minute
触点电阻(初始值) Contact Resistance(Initial Value)	100mΩ Max ( 取决于类型/Depends on P/Ns)	
绝缘电阻/Insulation Resistance(at 500VDC)	在500VDC时/At 500VDC, 100MΩ Min.	
抗电强度/Dielectric Strength	AC 600V RMS ( 50~60Hz )	
保存温度/Storage Temperature	-40° C ~ +85° C	
保存湿度/Storage Humidity	85%RH Max	
寿命/Service Life	电气/Electrical	6,000~50,000 次/cycles ( 取决于类型/Depends on P/Ns )
	机械/Mechanical	1,000,000次/cycles
重量 / Weight	约0.5g ( 直PCB无手柄类型 ) About 0.5g(Straight PCB type without lever)	