

Technical Features

MATERIALS

INSULATOR : Special PPS Fiberglass filled thermoplastic UL 94-V0 (oxygen free, no humidity absorption, radiation resistance)

LF CONTACTS :

- Male : Terminal- copper alloy / gold Contact / gold
- Female : Terminal- copper alloy / gold Socket body beryllium copper / gold

FIXING HARDWARE :

- Latch : Beryllium copper / plated nickel (CMM 100/200 series)
- Jackscrew : stainless steel (CMM 220/320/340 series)

ELECTRICAL

- All contacts : 3 A max. @ 25°C - 2.2 A max. @ 85°C
- Working voltage (sea level) : 240V DC (tested at 800V)
- Proof voltage : 360V DC (tested at 1200V)
- Contact resistance (initially) : max.10 mΩ
- Insulation resistance : 1 000 M Ω min.

MECHANICAL

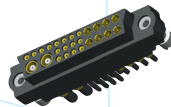
- Mechanical operations : 500 cycles min.
- Contact insertion and withdrawal force : 2 N max., 0.2 min.
- Contact retention in insulator : 10 N min.
- Contacts removal : 3 cycles

ENVIRONMENTAL

- Temperature range : from -60°C to + 250°C
Complies with vapor phase and infrared techniques (260°C Max)
- Vibration severity : 0.75 mm, 10 g RMS 6 hours long random with superimposed sinusoid. No intermittencies measured when using an H.S.L.I. (High Speed Logic Interrupt) detector with a trip threshold of 2 ns
- Shock severity : 100 g for 6 ms
- Resistance : HcFc 141 bMGX (ATOCEM) solvent

NICOMATIC Advantages

- unlimited style of connector
- very small footprint : 2 mm pitch
- mixed-layout option
- high frequency, high power & high speed characteristics
- excellent mechanical & environmental characteristics
- large range of accessories : covers, shieldings, toolings, cable harnessing facility, backpotting as required



For more information, please consult www.nicomatic.com



NICOMATIC FRANCE
is certified ISO 9001:2000



Special contacts

Coaxmatic 30™ & Coaxmatic 22™

	COAXMATIC® 30	COAX CABLES			MALE/FEMALE	COAXMATIC® 22
		MALE/FEMALE	Cable	Ext. XX		
COAX CONTACTS		30-13xx 30-23xx	+ RG 178 Ø 2 + RG 316 Ø 2.6	20 26	→	22-13xx 22-23xx
		30-14xx 30-24xx		Ø 1.2 Ø 2.4	12 24	
		30-1300-xx 30-2300-xx				22-1300-xx 22-2300-xx
		30-1400-xx 30-2400-xx				22-1400-xx 22-2400-xx
		30-1500 CMM male				22-2500 CMM female
HIGH POWER CONTACTS		30-33xx 30-43xx	+ AWG	12 14 16	20 15 10	22-33xx 22-43xx
		30-3300-xx 30-4300-xx				22-3300-xx 22-4300-xx
		30-3400-xx 30-4400-xx				22-3400-xx 22-4400-xx

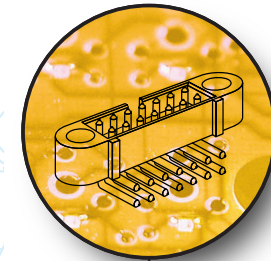
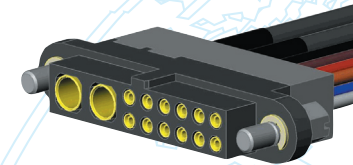
New HF and HP contacts available!
Contact us.



09/2006-C.CMM Leaf



specialized in electronic connectors



CMM series micro-connectors



NICOMATIC SA
(Headquarters)
173, rue des Fougères
Z.I. Les Bracots
F-74890 Bons-en-Chablais
Phone +33 (0)4 50 36 13 85
Fax +33 (0)4 50 36 11 33
E-mail : nicomatic@nicomatic.fr

NICOMATIC NORTH AMERICA
One Ivybrook Blvd,
Unit 120
Warminster, PA 18974 - USA
Phone : +55 11 3315-4411
Fax : +1 (215) 444-9580
E-mail : sales@nicomatic.net

NICOMATIC SOUTH AMERICA
Rua Hungria, 574 cj. 51 Jd.
Europa 01455-000 São Paulo - SP
Phone : +55 11 3315-4411
Fax : +55 11 3814-6133
E-mail : nicomatic@nicomatic.com.br

NICOMATIC KOREA
9F Saehan Venture World
113-15 Silheung Dong
Kumchun-Ku Seoul - KOREA
Phone : +82 2 804 32 06
Fax : +82 2 806 32 06
E-mail : nicorea@unifel.co.kr

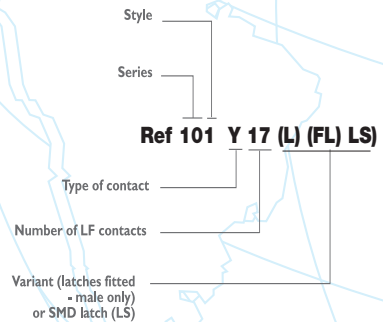
<http://www.nicomatic.com>

CMM series 100/200



- CMM 100 : 1 row from 2 to 25 contacts
- CMM 200 : 2 rows from 4 to 50 contacts, multiple of 2
- For LF (Low Frequency) contacts only
- Male LF contacts : straight and 90° PCB, straight and 90° SMD, crimp on wire AWG 22-28
- Female LF contacts : straight PCB, press fit, straight and 90° SMD, crimp on wire AWG 22-28
- Polarized by chamfer
- Locking with latches (traditional, friction or SMD)

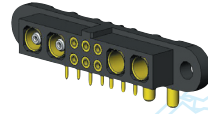
Part numbering



Polarizing by chamfer

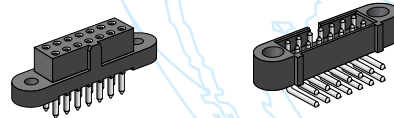
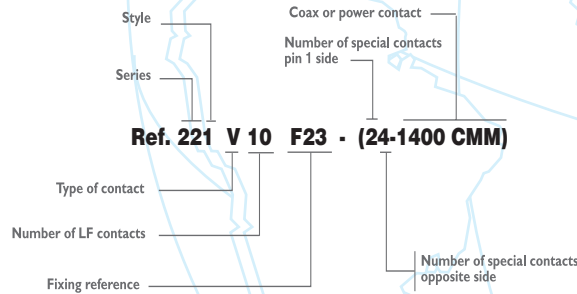


CMM series 220



- CMM 220 LF : 2 rows from 4 to 60 contacts
- Mixed Layout to combine LF and HF/HP (High Frequency /High Power) contacts
- HF/HP contacts in one connector : up to 15 Coaxmatic 30™ series
- Male LF contacts : straight and 90° PCB, straight and 90° SMD, crimp on wire AWG 22-28
- Female LF contacts : straight PCB, press fit, straight SMD, crimp on wire AWG 22-28
- Polarized by slot/key
- Locking with stainless steel fixing hardware

Part numbering



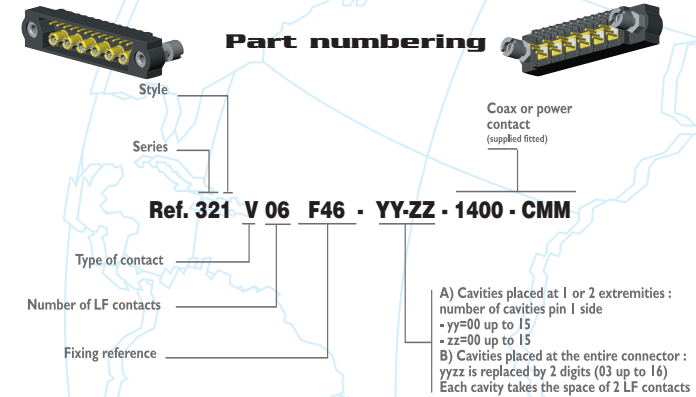
Polarizing slot / key



CMM series 320/340

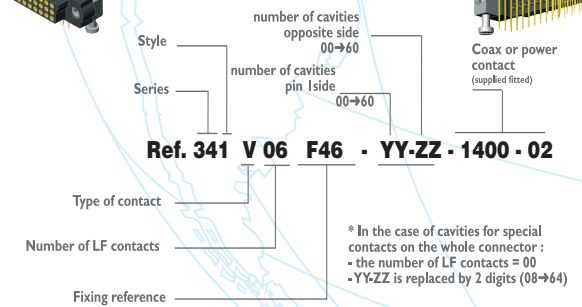
- CMM 320 LF : 3 rows from 6 to 120 contacts
- CMM 320 HF/HP : 3 rows with Mixed Layout
- HF/HP contacts in one connector : up to 20 Coaxmatic 30™ series and up to 32 LF contacts if 16 HF/HP contacts are used (4 LF contacts space = 1 HF/HP contact space)
- Male LF contacts : straight and 90° PCB, 90° SMD, crimp on wire AWG 22-28
- Female LF contacts : straight PCB, crimp on wire AWG 22-28
- Polarized by shape

Part numbering



- CMM 340
 - 3 rows, mixed layout
 - up to 64 special contacts (coaxmatic 22™)
 - up to 32 signal contacts by row

Part numbering



* In the case of cavities for special contacts on the whole connector :
 - the number of LF contacts = 00
 - YY-ZZ is replaced by 2 digits (08-64)

Polarizing by shape

