

# CDH32

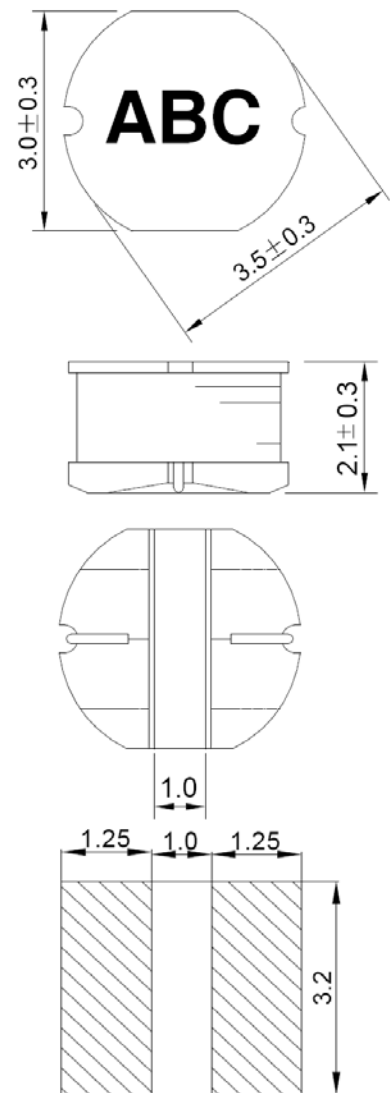


## ◆ 特征 Feature

- 具有高功率，高饱和度，低阻抗，小型化的特点。  
Various high power inductors are superior to be high saturation for surface mounting.
- 直接电极设计，降低零件高度。  
Put the electrode with ferrite core directly, a small Surface area allow a high mounting density.
- 低价格，适用于回流焊 SMT 工艺  
Low profile, suitable for reflow soldering.

型号 Part number	电感量 Inductanc	Q 值 Typical Q	自谐频率 SRF	直流电阻 DCR	饱和电流 Isat
Units	( $\mu\text{H}$ )	Ref.	(MHz) typ.	( $\Omega$ ) max	(A)
CDH32-1R0ML_	1.0 $\pm$ 20%	20	125	0.035	3.34
CDH32-2R2ML_	2.2 $\pm$ 20%	22	75	0.059	2.35
CDH32-3R3ML_	3.3 $\pm$ 20%	23	68	0.098	1.83
CDH32-4R7ML_	4.7 $\pm$ 20%	18	45	0.137	1.50
CDH32-5R6ML_	5.6 $\pm$ 20%	18	42	0.157	1.36
CDH32-6R8ML_	6.8 $\pm$ 20%	18	40	0.196	1.22
CDH32-8R2ML_	8.2 $\pm$ 20%	16	35	0.230	1.09
CDH32-100ML_	10 $\pm$ 20%	18	34	0.286	0.95
CDH32-120ML_	12 $\pm$ 20%	15	33	0.322	0.88
CDH32-150ML_	15 $\pm$ 20%	20	32	0.398	0.82
CDH32-180ML_	18 $\pm$ 20%	18	28	0.52	0.76
CDH32-220ML_	22 $\pm$ 20%	23	22	0.66	0.63
CDH32-270ML_	27 $\pm$ 20%	23	20	0.76	0.62
CDH32-330ML_	33 $\pm$ 20%	20	18	0.87	0.56
CDH32-390ML_	39 $\pm$ 20%	24	18	1.10	0.51
CDH32-470ML_	47 $\pm$ 20%	23	17	1.25	0.47
CDH32-560ML_	56 $\pm$ 20%	18	16	1.59	0.42
CDH32-680ML_	68 $\pm$ 20%	24	14	1.82	0.38
CDH32-820ML_	82 $\pm$ 20%	24	12	2.44	0.34
CDH32-101ML_	100 $\pm$ 20%	40	10	2.84	0.31
CDH32-121ML_	120 $\pm$ 20%	40	10	3.19	0.28
CDH32-151ML_	150 $\pm$ 20%	38	9.0	4.20	0.16
CDH32-181ML_	180 $\pm$ 20%	45	8.5	5.11	0.15
CDH32-221ML_	220 $\pm$ 20%	40	8.0	7.31	0.14
CDH32-271ML_	270 $\pm$ 20%	45	7.0	8.24	0.12
CDH32-331ML_	330 $\pm$ 20%	40	6.0	10.19	0.10

## ◆ 外形尺寸 Dimension



Recommended  
Land pattern

Unit:mm

※ 电感测试条件。Testing conditions of inductance.  
(1.0 $\mu\text{H}$ ~8.2 $\mu\text{H}$ )at 100 kHz /0.3V (10 $\mu\text{H}$ ~330 $\mu\text{H}$ )at 1 kHz /0.3V.

※ 饱和电流：电感值下降到标准值的 70%时的电流值。  
Isat: This indicates the value of DC current when the inductance decreases to 70% of its nominal value.