

# CDH53

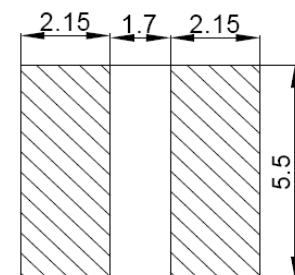
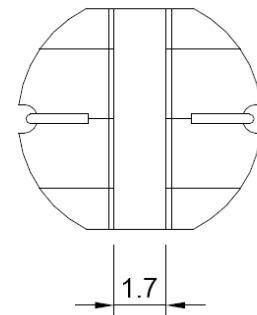
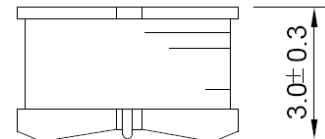
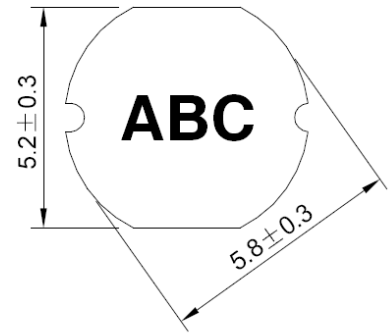


## ◆ 特征 Feature

- 具有高功率，高饱和度，低阻抗，小型化的特点。  
Various high power inductors are superior to be high saturation for surface mounting.
- 直接电极设计，降低零件高度。  
Put the electrode with ferrite core directly, a small Surface area allow a high mounting density.
- 低价格，适用于回流焊 SMT 工艺  
Low profile, suitable for reflow soldering.

型号 Part number	电感量 Inductance	Q 值 Typical Q	自谐振频率 SRF	直流电阻 DCR	饱和电流 Isat
Units	( $\mu$ H)	Ref.	(MHz) typ.	( $\Omega$ ) max	(A)
CDH53-1R0ML_	1.0 $\pm$ 20%	28	40	0.038	4.5
CDH53-2R2ML_	2.2 $\pm$ 20%	28	38	0.045	3.5
CDH53-3R3ML_	3.3 $\pm$ 20%	25	37	0.055	2.8
CDH53-3R9ML_	3.9 $\pm$ 20%	25	36	0.064	2.6
CDH53-4R7ML_	4.7 $\pm$ 20%	25	35	0.072	2.5
CDH53-5R6ML_	5.6 $\pm$ 20%	25	34	0.084	2.4
CDH53-6R8ML_	6.8 $\pm$ 20%	25	33	0.090	2.2
CDH53-8R2ML_	8.2 $\pm$ 20%	20	32	0.100	2.0
CDH53-100ML_	10 $\pm$ 20%	20	30	0.120	1.8
CDH53-120ML_	12 $\pm$ 20%	20	29	0.130	1.75
CDH53-150ML_	15 $\pm$ 20%	20	27	0.150	1.7
CDH53-180ML_	18 $\pm$ 20%	20	24	0.180	1.6
CDH53-220ML_	22 $\pm$ 20%	20	22	0.220	1.5
CDH53-270ML_	27 $\pm$ 20%	20	20	0.240	1.4
CDH53-330ML_	33 $\pm$ 20%	15	18	0.300	1.1
CDH53-390ML_	39 $\pm$ 20%	15	17	0.400	1.0
CDH53-470ML_	47 $\pm$ 20%	20	14	0.430	0.9
CDH53-560ML_	56 $\pm$ 20%	20	13	0.500	0.85
CDH53-680ML_	68 $\pm$ 20%	20	12	0.600	0.80
CDH53-820ML_	82 $\pm$ 20%	15	10	0.800	0.65
CDH53-101ML_	100 $\pm$ 20%	40	8.5	0.900	0.60
CDH53-121ML_	120 $\pm$ 20%	40	8.0	1.000	0.58
CDH53-151ML_	150 $\pm$ 20%	40	7.2	1.300	0.43
CDH53-181ML_	180 $\pm$ 20%	40	6.9	1.500	0.41
CDH53-221ML_	220 $\pm$ 20%	35	6.2	2.000	0.38
CDH53-271ML_	270 $\pm$ 20%	35	5.7	2.500	0.35
CDH53-331ML_	330 $\pm$ 20%	30	5.3	3.200	0.28

## ◆ 外形尺寸 Dimension



**Recommended  
Land pattern**

Unit:mm

※ 电感测试条件。Testing conditions of inductance.  
(1.0uH~8.2uH)at 100 kHz /0.3V (10uH~330uH)at 1 kHz /0.3V.

※ 饱和电流：电感值下降到标准值的 70%时的电流值。  
Isat: This indicates the value of DC current when the inductance decreases to 70% of its nominal value.