

CDH54

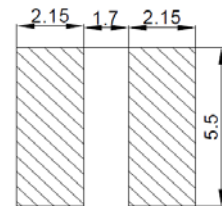
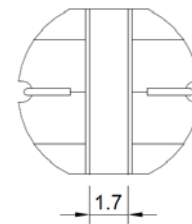
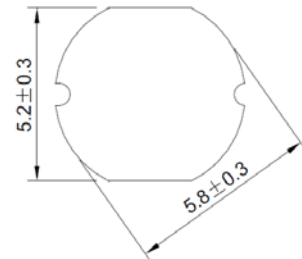


◆ 特征 Feature

- 具有高功率，高饱和度，低阻抗，小型化的特点。
Various high power inductors are superior to be high saturation for surface mounting.
- 直接电极设计，降低零件高度。
Put the electrode with ferrite core directly, a small Surface area allow a high mounting density.
- 低价格，适用于回流焊 SMT 工艺
Low profile, suitable for reflow soldering.

型号 Part number	电感量 Inductance	Q 值 Typical Q	自谐频率 SRF	直流电阻 DCR	饱和电流 Isat
Units	(μH)	Ref.	(MHz) min.	(Ω) max	(A)
CDH54-1R0ML_	1.0 \pm 20%	30	60	0.020	5.0
CDH54-2R2ML_	2.2 \pm 20%	30	55	0.025	4.8
CDH54-3R3ML_	3.3 \pm 20%	29	54	0.027	4.5
CDH54-3R9ML_	3.9 \pm 20%	29	45	0.030	3.5
CDH54-4R7ML_	4.7 \pm 20%	28	40	0.034	3.0
CDH54-5R6ML_	5.6 \pm 20%	28	38	0.040	2.8
CDH54-6R8ML_	6.8 \pm 20%	28	35	0.080	2.5
CDH54-100ML_	10.0 \pm 20%	26	32	0.10	1.44
CDH54-120ML_	12.0 \pm 20%	26	31	0.12	1.40
CDH54-150ML_	15.0 \pm 20%	26	30	0.14	1.30
CDH54-180ML_	18.0 \pm 20%	24	28	0.15	1.23
CDH54-220ML_	22.0 \pm 20%	24	28	0.18	1.11
CDH54-270ML_	27.0 \pm 20%	24	26	0.20	0.97
CDH54-330LL_	33.0 \pm 15%	22	26	0.23	0.88
CDH54-390LL_	39.0 \pm 15%	22	25	0.32	0.80
CDH54-470LL_	47.0 \pm 15%	22	25	0.37	0.72
CDH54-560KL_	56.0 \pm 10%	22	24	0.42	0.68
CDH54-680KL_	68.0 \pm 10%	22	23	0.48	0.61
CDH54-820KL_	82.0 \pm 10%	18	20	0.60	0.58
CDH54-101KL_	100 \pm 10%	18	18	0.70	0.52
CDH54-121KL_	120 \pm 10%	18	17	0.93	0.48
CDH54-151KL_	150 \pm 10%	15	14	1.10	0.40
CDH54-181KL_	180 \pm 10%	15	12	1.38	0.38
CDH54-221KL_	220 \pm 10%	15	10	1.57	0.35

◆ 外形尺寸 Dimension



**Recommended
Land pattern**

Unit: mm

※ 电感测试条件。Testing conditions of inductance.
(1.0uH~82uH)at 100 kHz /0.3V (100uH~220uH)at 1 kHz /0.3V.

※ 饱和电流：电感值下降到标准值的 70%时的电流值。
Isat: This indicates the value of DC current when the inductance decreases to 70% of its nominal value.