

CDH75

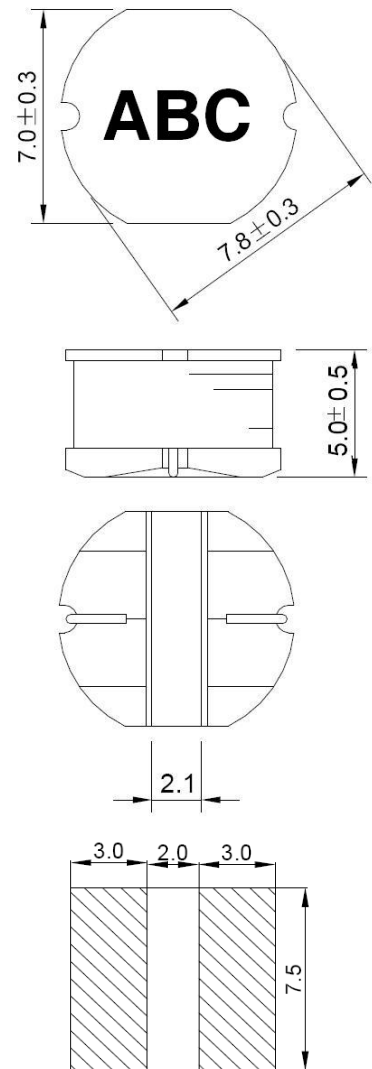


◆ 特征 Feature

- 具有高功率，高饱和度，低阻抗，小型化的特点。
Various high power inductors are superior to be high saturation for surface mounting.
- 直接电极设计，降低零件高度。
Put the electrode with ferrite core directly, a small Surface area allow a high mounting density.
- 低价格，适用于回流焊 SMT 工艺
Low profile, suitable for reflow soldering.

| 型号 Part number | 电感量 Inductance | Q 值 Typical Q | 自谐频率 SRF | 直流电阻 DCR | 饱和电流 Isat |
|-------------------|-------------------|------------------|-------------|------------------|--------------|
| Units | (μH) | Ref. | (MHz) min. | (Ω) max | (A) |
| CDH75-1R2ML_ | 1.2 \pm 20% | 32 | 120 | 0.015 | 6.0 |
| CDH75-2R2ML_ | 2.2 \pm 20% | 32 | 70 | 0.023 | 5.3 |
| CDH75-3R3ML_ | 3.3 \pm 20% | 32 | 55 | 0.028 | 4.5 |
| CDH75-4R7ML_ | 4.7 \pm 20% | 31 | 38 | 0.045 | 4.0 |
| CDH75-6R8ML_ | 6.8 \pm 20% | 30 | 33 | 0.058 | 3.2 |
| CDH75-8R2ML_ | 8.2 \pm 20% | 29 | 30 | 0.060 | 2.8 |
| CDH75-100ML_ | 10.0 \pm 20% | 25 | 22 | 0.070 | 2.3 |
| CDH75-120ML_ | 12.0 \pm 20% | 25 | 20 | 0.080 | 2.0 |
| CDH75-150ML_ | 15.0 \pm 20% | 25 | 16 | 0.090 | 1.8 |
| CDH75-180ML_ | 18.0 \pm 20% | 20 | 15 | 0.10 | 1.6 |
| CDH75-220ML_ | 22.0 \pm 20% | 20 | 13 | 0.11 | 1.5 |
| CDH75-270ML_ | 27.0 \pm 20% | 20 | 12 | 0.12 | 1.3 |
| CDH75-330ML_ | 33.0 \pm 20% | 15 | 10 | 0.13 | 1.2 |
| CDH75-390ML_ | 39.0 \pm 20% | 15 | 9.5 | 0.16 | 1.1 |
| CDH75-470ML_ | 47.0 \pm 20% | 15 | 9.0 | 0.18 | 1.0 |
| CDH75-560KL_ | 56.0 \pm 10% | 15 | 8.5 | 0.24 | 0.94 |
| CDH75-680KL_ | 68.0 \pm 10% | 15 | 8.0 | 0.28 | 0.85 |
| CDH75-820KL_ | 82.0 \pm 10% | 12 | 7.0 | 0.37 | 0.78 |
| CDH75-101KL_ | 100.0 \pm 10% | 12 | 6.5 | 0.43 | 0.72 |
| CDH75-121KL_ | 120.0 \pm 10% | 12 | 5.6 | 0.47 | 0.66 |
| CDH75-151KL_ | 150.0 \pm 10% | 12 | 5.5 | 0.64 | 0.58 |
| CDH75-181KL_ | 180.0 \pm 10% | 12 | 5.0 | 0.71 | 0.51 |
| CDH75-221KL_ | 220.0 \pm 10% | 12 | 4.8 | 0.96 | 0.49 |
| CDH75-271KL_ | 270.0 \pm 10% | 12 | 4.5 | 1.11 | 0.52 |
| CDH75-331KL_ | 330.0 \pm 10% | 12 | 4.3 | 1.26 | 0.40 |
| CDH75-391KL_ | 390.0 \pm 10% | 12 | 4.0 | 1.77 | 0.36 |
| CDH75-471KL_ | 470.0 \pm 10% | 12 | 3.8 | 1.96 | 0.34 |
| CDH75-561KL_ | 560.0 \pm 10% | 30 | 3.7 | 2.50 | 0.30 |
| CDH75-681KL_ | 680.0 \pm 10% | 29 | 3.5 | 2.80 | 0.28 |
| CDH75-821KL_ | 820.0 \pm 10% | 28 | 3.2 | 4.00 | 0.23 |
| CDH75-102KL_ | 1000.0 \pm 10% | 27 | 3.0 | 4.50 | 0.21 |

◆ 外形尺寸 Dimension



Recommended
Land pattern

Unit: mm

※ 电感测试条件。Testing conditions of inductance.
(1.2 μH ~8.2 μH)at 100 kHz /0.3V (10 μH ~1000 μH)at 100 kHz /0.3V.

※ 饱和电流：电感值下降到标准值的 70%时的电流值。
Isat: This indicates the value of DC current when the inductance decreases to 70% of its nominal value.