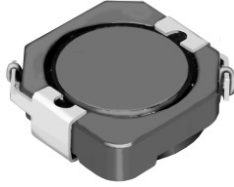


PS1038

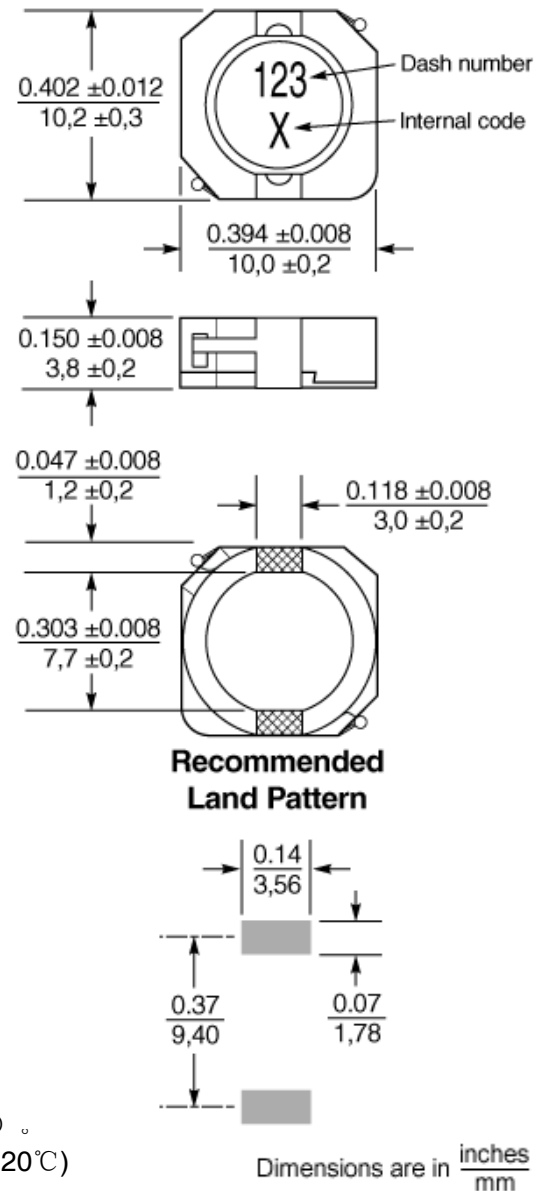


◆ 特征 Feature

- 10.0 × 10.2 × 3.8mm 封装尺寸，闭磁式功率电感。
10.0 × 10.2 mm footprint; 3.8 mm high shielded inductors.
- 直流电阻小及极好的定格电流特性。
Low DCR and excellent current handling.
- 饱和电流特性最高可达到 10.0 Amps。
Saturation current rating up to 10.0 Amps.
- 高可靠性，低价格。
Very high reliability and low cost.

型号 Part number	电感量 Inductance	直流电阻 DCR	自谐频率 SRF	饱和电流 Isat	温升电流 Irms
Units	(μ H)	(m Ω) max	(MHz) typ	(A) 30% drop	(A) 40 $^{\circ}$ C rise
PS1038-1R0NL_	1.0 \pm 30%	6.0	138	12.10	10.00
PS1038-1R5NL_	1.5 \pm 30%	8.1	81	11.06	7.85
PS1038-2R5NL_	2.5 \pm 30%	10	60	9.26	6.65
PS1038-3R8NL_	3.8 \pm 30%	13	45	7.64	6.05
PS1038-5R2NL_	5.2 \pm 30%	22	37	6.14	5.10
PS1038-7R0NL_	7.0 \pm 30%	27	33	5.60	4.35
PS1038-100NL_	10 \pm 30%	35	29	4.52	4.05
PS1038-120ML_	12 \pm 20%	41	25	4.04	4.00
PS1038-150ML_	15 \pm 20%	50	21	3.86	3.80
PS1038-180ML_	18 \pm 20%	65	18	3.52	3.35
PS1038-220ML_	22 \pm 20%	73	15	3.30	2.85
PS1038-270ML_	27 \pm 20%	89	15	2.84	2.35
PS1038-330ML_	33 \pm 20%	93	13	2.62	2.30
PS1038-390ML_	39 \pm 20%	112	12	2.34	2.25
PS1038-470ML_	47 \pm 20%	128	11	2.22	2.20
PS1038-560ML_	56 \pm 20%	180	11	2.04	1.85
PS1038-680ML_	68 \pm 20%	213	10	1.82	1.75
PS1038-820ML_	82 \pm 20%	261	8	1.60	1.50
PS1038-101ML_	100 \pm 20%	304	6	1.46	1.45
PS1038-121KL_	120 \pm 10%	380	6	1.34	1.25
PS1038-151KL_	150 \pm 10%	506	6	1.22	1.20
PS1038-181KL_	180 \pm 10%	582	5	1.16	0.98
PS1038-221KL_	220 \pm 10%	756	5	0.99	0.97
PS1038-271KL_	270 \pm 10%	926	4	0.91	0.86
PS1038-331KL_	330 \pm 10%	1090	4	0.82	0.69
PS1038-391KL_	390 \pm 10%	1141	4	0.74	0.65
PS1038-471KL_	470 \pm 10%	1243	3	0.70	0.63
PS1038-561KL_	560 \pm 10%	1696	3	0.56	0.59
PS1038-681KL_	680 \pm 10%	1926	3	0.52	0.50
PS1038-821KL_	820 \pm 10%	2596	3	0.49	0.47
PS1038-102KL_	1000 \pm 10%	2853	3	0.46	0.45

◆ 外形尺寸 Dimension



※ 饱和电流：电感值下降到标准值的 70% 时的电流值。

Isat: This indicates the value of DC current when the inductance decreases to 70% of its nominal value.

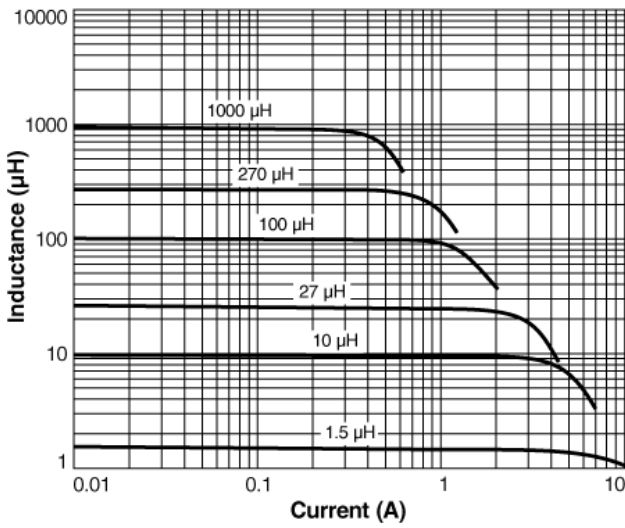
※ 温升电流：线圈温度上升 $\Delta T=40^{\circ}\text{C}$ 时的电流值（基准温度 $T_a=20^{\circ}\text{C}$ ）。

Irms: The current when temperature of coil becomes $\Delta T=40^{\circ}\text{C}$. ($T_a=20^{\circ}\text{C}$)

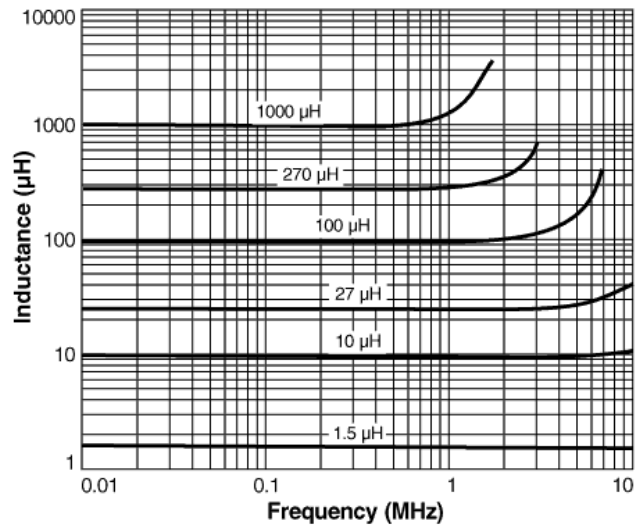
continued on next page 接下页

continued from previous page 接上页 PS1038

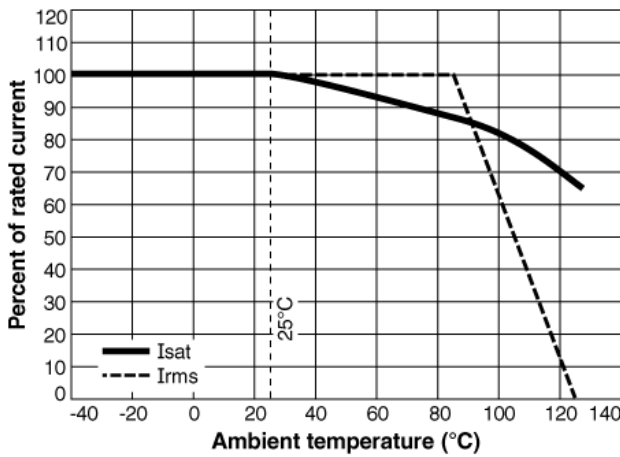
◆ 电感值 vs 电流曲线
Typical L vs Current



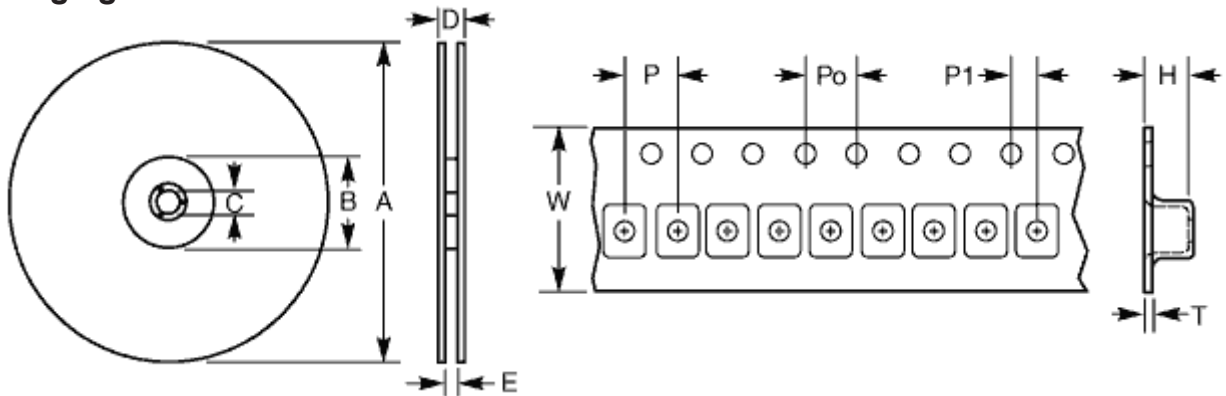
◆ 电感值 vs 频率曲线
Typical L vs Frequency




◆ 电流下降曲线
Irms Derating



◆ 包装方式
Packaging



每盘数量 Parts per reel	卷盘尺寸 Reel dimensions (mm)					卷带尺寸 Tape dimensions (mm)						方向 Orientation
13" (330 mm)	A	B	C	D	E	W	P	Po	P1	H	T	
1000	330	100	13	30,4	24,4	24	16	4	2	4,5	0,35	