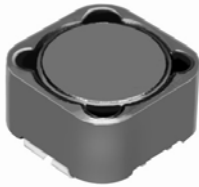


PS1260

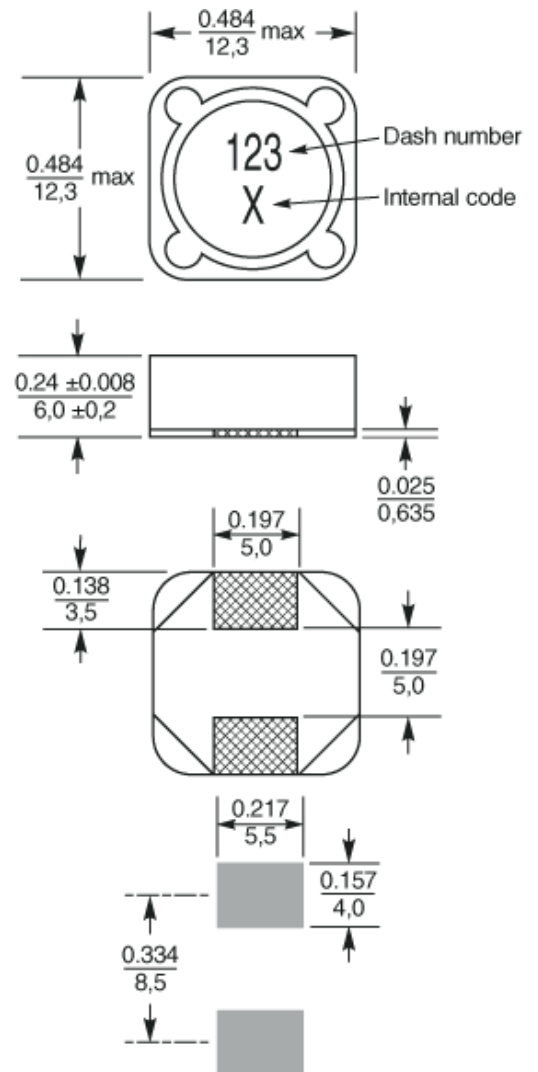


◆ 特征 Feature

- 12.3 × 12.3 × 6.0mm 封装尺寸，闭磁式功率电感。
12.3 × 12.3 mm footprint; 6.0 mm high shielded inductors.
- 直流电阻小及极好的定格电流特性。
Low DCR and excellent current handling.
- 饱和电流特性最高可达到 22.7 Amps。
Saturation current rating up to 22.7 Amps.
- 高可靠性，低价格。
Very high reliability and low cost.

型号 Part number	电感量 Inductance	直流电阻 DCR	自谐频率 SRF	饱和电流 Isat	温升电流 Irms
Units	(μH)	($\text{m}\Omega$) max	(MHz) typ	(A) 30% drop	(A) 40°C rise
PS1260-1R0NL_	1.0 \pm 30%	6.5	100	22.7	8.00
PS1260-1R5NL_	1.5 \pm 30%	9.8	80.0	17.6	7.50
PS1260-2R2NL_	2.2 \pm 30%	12.8	55.0	13.9	7.00
PS1260-3R3NL_	3.3 \pm 30%	14.0	42.0	12.5	7.00
PS1260-4R7ML_	4.7 \pm 20%	15.5	33.0	10.8	7.00
PS1260-5R6ML_	5.6 \pm 20%	16.6	30.0	9.74	6.40
PS1260-6R8ML_	6.8 \pm 20%	18.5	27.0	8.80	5.90
PS1260-8R2ML_	8.2 \pm 20%	22.5	26.0	8.50	4.80
PS1260-100ML_	10 \pm 20%	23.9	22.0	7.40	4.00
PS1260-120ML_	12 \pm 20%	27.3	20.0	6.42	3.70
PS1260-150ML_	15 \pm 20%	34.2	18.0	5.78	3.50
PS1260-180ML_	18 \pm 20%	39.4	16.0	5.62	3.30
PS1260-220ML_	22 \pm 20%	40.7	15.0	4.96	3.10
PS1260-270ML_	27 \pm 20%	57.0	13.0	4.28	2.90
PS1260-330ML_	33 \pm 20%	61.0	12.4	4.02	2.70
PS1260-390ML_	39 \pm 20%	64.5	12.0	3.80	2.60
PS1260-470ML_	47 \pm 20%	89.0	11.6	3.30	2.50
PS1260-560ML_	56 \pm 20%	91.7	10.5	3.14	2.40
PS1260-680ML_	68 \pm 20%	105.0	10.0	2.94	2.30
PS1260-820ML_	82 \pm 20%	146.3	8.6	2.64	2.20
PS1260-101ML_	100 \pm 20%	157.6	7.8	2.32	2.10
PS1260-121KL_	120 \pm 10%	214.8	6.8	2.10	1.85
PS1260-151KL_	150 \pm 10%	239.4	6.4	1.98	1.66
PS1260-181KL_	180 \pm 10%	282.5	6.1	1.72	1.58
PS1260-221KL_	220 \pm 10%	349.0	5.5	1.56	1.42
PS1260-271KL_	270 \pm 10%	409.8	4.3	1.38	1.45
PS1260-331KL_	330 \pm 10%	534.8	4.0	1.24	1.16
PS1260-391KL_	390 \pm 10%	575.0	3.6	1.15	1.08
PS1260-471KL_	470 \pm 10%	801.4	3.0	1.06	0.96
PS1260-561KL_	560 \pm 10%	859.0	2.8	1.00	0.88
PS1260-681KL_	680 \pm 10%	964.0	2.6	0.92	0.80
PS1260-821KL_	820 \pm 10%	1287	2.5	0.81	0.73
PS1260-102KL_	1000 \pm 10%	1415	2.4	0.74	0.68

◆ 外形尺寸 Dimension



Recommended Land Pattern

Dimensions are in $\frac{\text{inches}}{\text{mm}}$

※ 饱和电流：电感值下降到标准值的 70% 时的电流值。

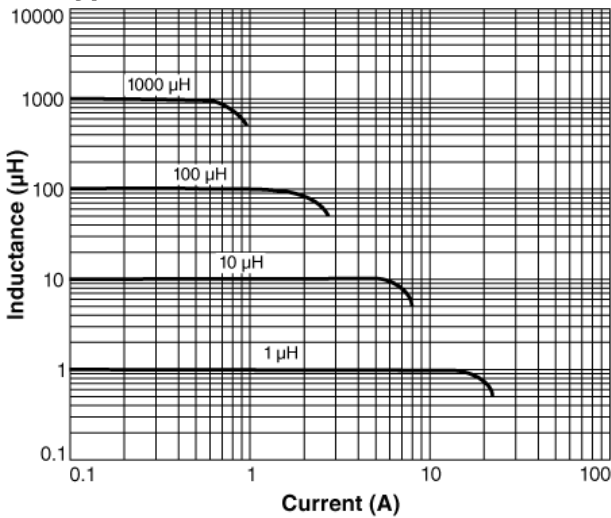
Isat: This indicates the value of DC current when the inductance decreases to 70% of its nominal value.

※ 温升电流：线圈温度上升 $\Delta T=40^\circ\text{C}$ 时的电流值（基准温度 $T_a=20^\circ\text{C}$ ）

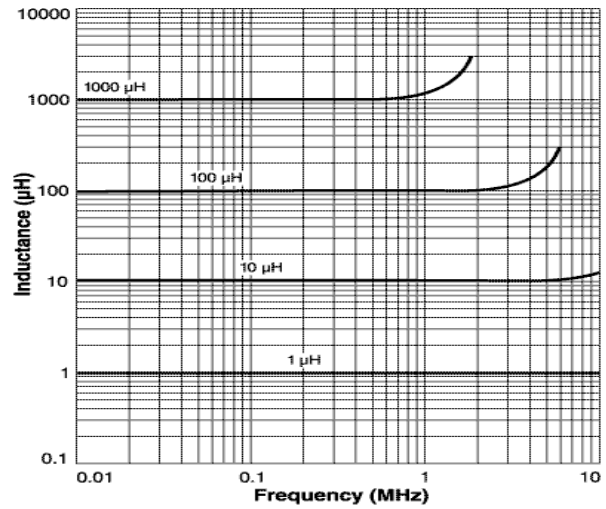
Irms: The current when temperature of coil becomes $\Delta T=40^\circ\text{C}$. ($T_a=20^\circ\text{C}$)

continued from previous page 接上页 PS1260

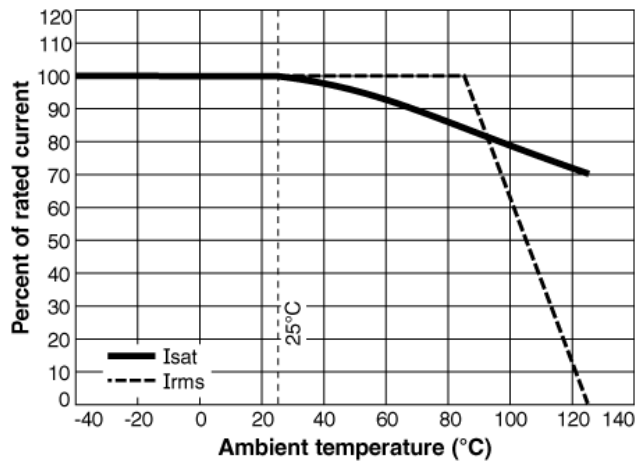
◆ 电感值 vs 电流曲线
Typical L vs Current



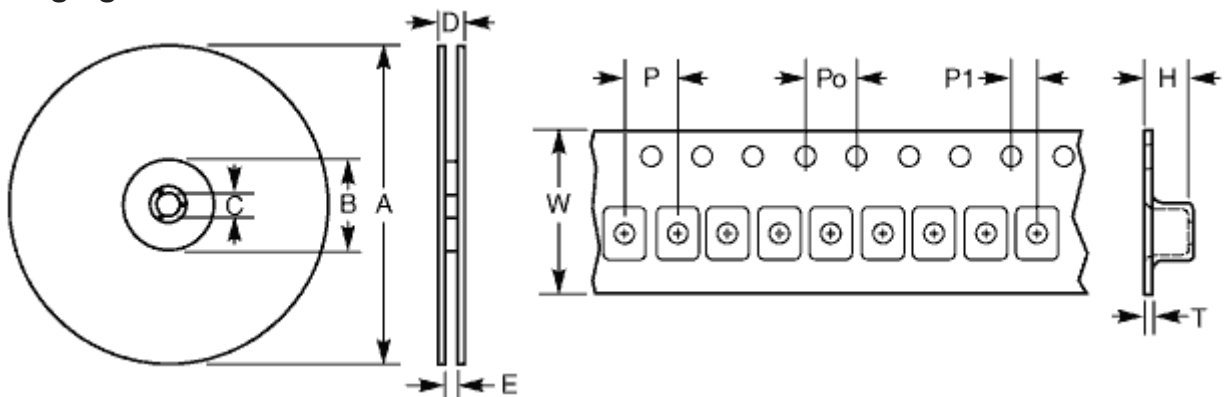
◆ 电感值 vs 频率曲线
Typical L vs Frequency




◆ 电流下降曲线
I_{rms} Derating



◆ 包装方式
Packaging



每盘数量 Parts per reel	卷盘尺寸 Reel dimensions (mm)					卷带尺寸 Tape dimensions (mm)						方向 Orientation
	A	B	C	D	E	W	P	Po	P1	H	T	
13" (330 mm)	330	100	13	30,4	24,4	24	16	4	2	4,7	0,35	
800												