

MD-S910C Air Compressor Switch

- ✓ Setting pressure limits by your requirement.
- ✓ Clear indicating by 4-ways LED digital value.
- ✓ Relay signal output .
- ✓ Longer-lifespan than traditional mechanism switch.
- ✓ Accuracy, sound-proof.
- ✓ Anti-vibration ,Anti-jamming, response rapidly, reliable.

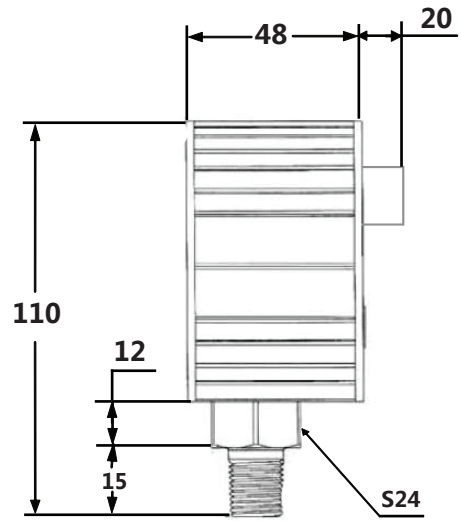
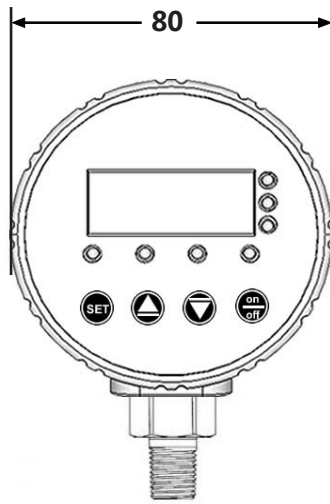


It applied for the stop and start up control system of air compressor machine, it gain more reliable when use it together with the electromagnetism valve. The machine will stop when the pressure to the upper level, when the pressure come down to the setting low lever, it will connect the power again. The adjustable function for the pressure could meet more requirements and take a place of traditional mechanism switch. No contact, control easily and nicety, long life-span,Energy saving and environmental protection.

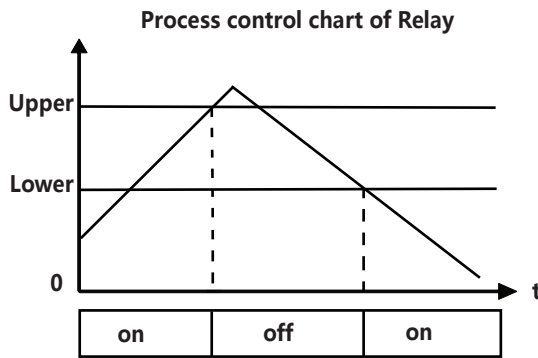
Technique Parameters

Pressure Range	0~1.6Mpa (16bar)
Overload Ability	200%
Accuracy	0.5%FS
Power supply	24VDC、220VAC、380VAC
Setting Range	Setting in any value in the whole range
Output	Relay
Relay Capacity	220V 5A
Frequency	5 Hz
Temperature	-20°C~80°C
Material	Gas
Protection	Reverse polarity and short circuit protection
Flare Connection	M20*1.5 G1/4 G1/2
Line definition	Power : red blue Out : black white

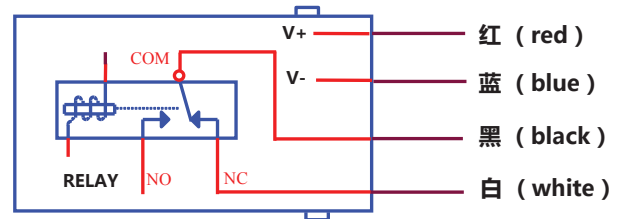
Outline dimensions(mm)



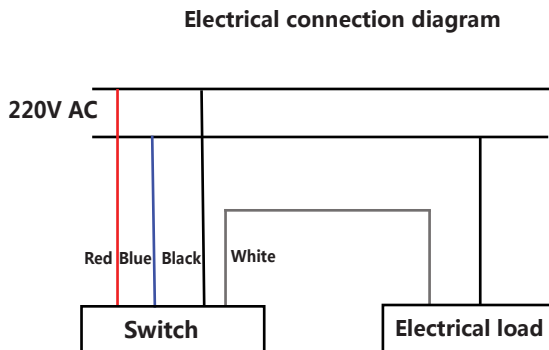
Relay and Line definition



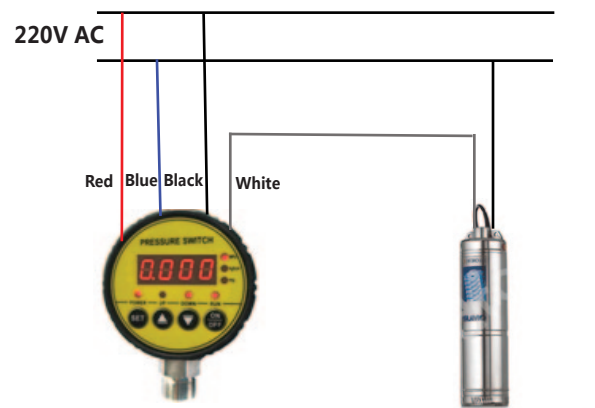
Line definition



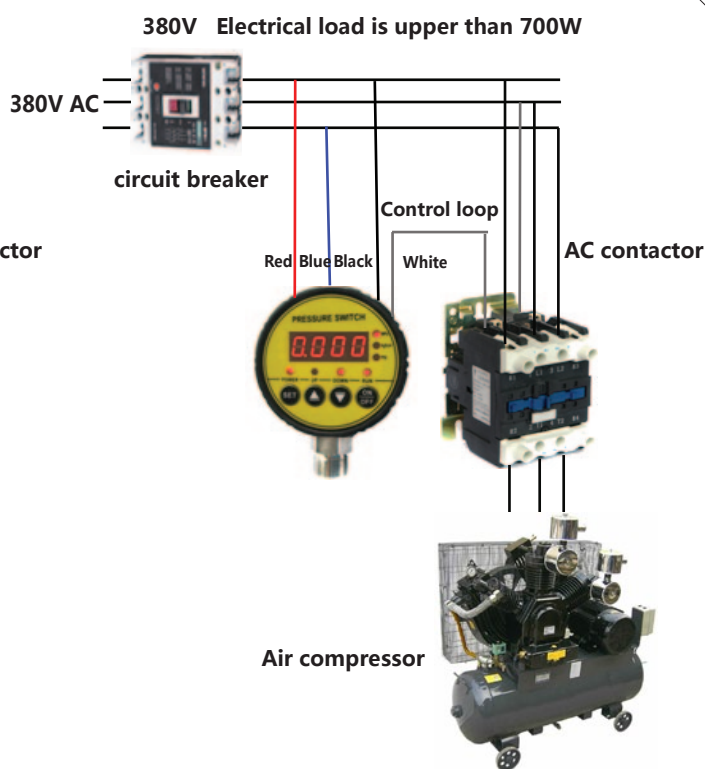
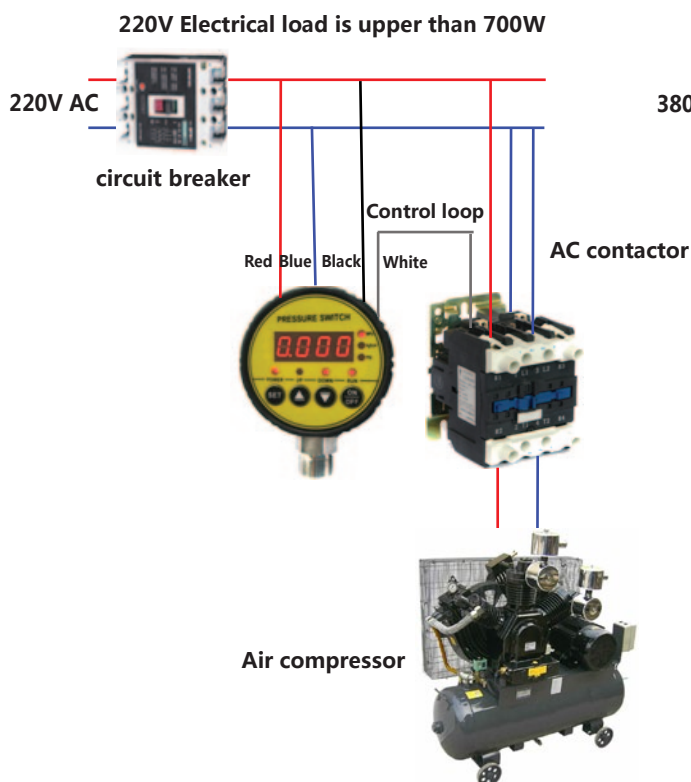
Electrical connection diagram



Electrical load is lower than 700W



Electrical connection diagram



Product selection guide

MD-S910C - 16b - 1 - J - P4 - M1 - D - T1 - L

Range

x k (0-x kpa)
x b (0-x bar)
x M (0-x MPa)
x p (0-x psi)
x m (0-mH2O)

Accuracy

1 (0.5% FS) 2 (0.25% FS)
3 (0.15% FS) 4 (0.075% FS)

Output

A (4~20 mA) V1 (0~10 V)
V2 (0~5 V) V3 (0.5~4.5V)
J (relay) E (other)

Power

P1 (5VDC) P2 (24VDC)
P3 (9~32VDC) P4 (220VAC)
P5 (380VAC for MD-S)

Additional

L (with display)
I (Ex i explosion
-proof)
D (flame-proof)
C (CE approved)

Temperature

T1 (-20~+80°C)
T2 (-40~+125°C)
T3 (0~+150°C)
T4 (0~+200°C)

Electrical Connection

A (DIN)
B (Cable)
C (air plugs)
D (socket)
E(cable with IP68)

Flare connection

M1 (M20*1.5) M2 (G1/4)
M3 (G1/2) M4 (1/2NPT)
M5 (1/4NPT) M6 (Input)
M7 (custom-made)

Pressure Switch 压力控制器