

LB系列

● 保证 85°C 2,000 小时。

- 标准品
- 纹波负荷
- RoHS指令适应品



规格表

项 目	性 能						
工作温度范围	-40~+85°C (10~600V _{dc})						
额定电压范围	10~600V _{dc}						
静电容量容许差	±20%(M) (20°C、120Hz)						
漏电流	I ≤ 0.02CV 或者 5mA 中任意一个较小值 I: 漏电流 (μA)、C: 静电容量 (μF)、额定电压 (V _{dc}) (20°C、5分值)						
损失角正切值 (tan δ)	≤ 标准品一览表的价值 (20°C、120Hz)						
温度特性	静电容量变化率 C(-25°C) / C(+20°C) ≥ 0.7 (120Hz)						
绝缘电阻	全部端子和容器套上的绝缘套且安装的固定带之间用DC500V的绝缘电阻测定仪测出的值 ≥ 100MΩ						
绝缘耐压	全部端子和容器套上的绝缘套且安装的固定带之间施加AC2,000V的电压1分钟未出现异常。						
耐久性	在85°C环境中, 不超过额定电压的范围内叠加额定纹波电流, 连续加载额定电压2,000小时后, 待温度恢复到20°C进行测量时, 应满足以下要求。 <table border="1" style="width: 100%;"> <tr> <td>静电容量变化率</td> <td>≤ 初始值的±20%</td> </tr> <tr> <td>损失角正切值</td> <td>≤ 初始规格值的200%</td> </tr> <tr> <td>漏电流</td> <td>≤ 初始规格值</td> </tr> </table>	静电容量变化率	≤ 初始值的±20%	损失角正切值	≤ 初始规格值的200%	漏电流	≤ 初始规格值
静电容量变化率	≤ 初始值的±20%						
损失角正切值	≤ 初始规格值的200%						
漏电流	≤ 初始规格值						
高温无负荷特性	在85°C环境中, 无负荷放置500小时后待温度恢复到20°C, 进行试验前处理 (JIS C 5101-4 4.1项) 后进行测量时, 应满足以下要求。 <table border="1" style="width: 100%;"> <tr> <td>静电容量变化率</td> <td>≤ 初始值的±20%</td> </tr> <tr> <td>损失角正切值</td> <td>≤ 初始规格值的150%</td> </tr> <tr> <td>漏电流</td> <td>≤ 初始规格值</td> </tr> </table>	静电容量变化率	≤ 初始值的±20%	损失角正切值	≤ 初始规格值的150%	漏电流	≤ 初始规格值
静电容量变化率	≤ 初始值的±20%						
损失角正切值	≤ 初始规格值的150%						
漏电流	≤ 初始规格值						

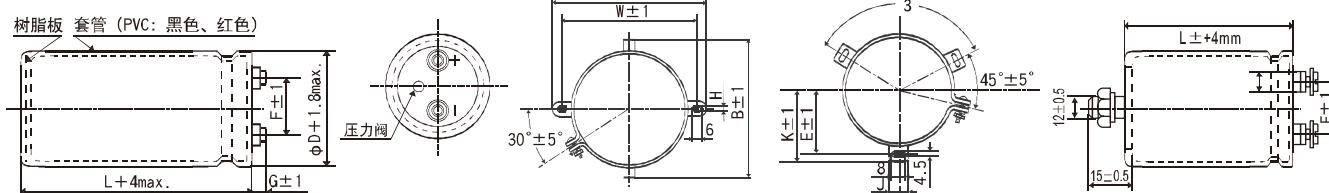
尺寸图 [mm]

● 端子代码: M5

● 绑带代码: B

● 绑带代码: C

● 无绑带代码: N



φ 35 ~ φ 63.5: G=6
 φ 76.2、φ 89: G=5

φD	A	B	W	H	F
63.5	90.0	76.0	80.0	4.5	28.0
76.2	104.5	90.0	93.5	4.5	31.5

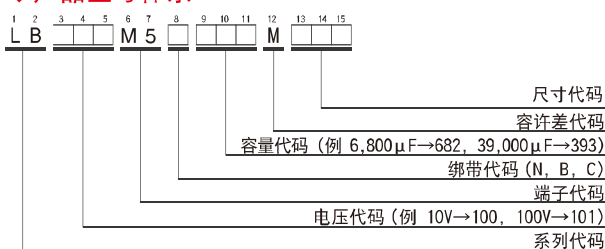
φD	E	K	F	J
63.5	38.1	43.5	28.0	14.0
76.2	44.5	50.0	31.5	14.0
89	50.8	56.5	31.5	16.0
100	56.5	63.4	41.5	18.0

< 端子螺丝规格 >

~ φ 89 十字六角长螺丝 M5×0.8×10、M6×1.0×10 φ 100 十字圆型小螺丝 M8×1.25×16
 螺丝拧紧最大容许转矩 3.23N·m 弹簧垫圈、平垫圈, 螺丝拧紧最大容许转矩 6.31N·m

(注 1) 端子螺丝及安装绑带分批交货为标准规格。

产品型号体系



产品型号代码的详细介绍请参考「产品型号的表示方法(螺丝端子型)」。

LB系列

◆标准品一览表

WV (Vdc)	Cap (μF)	尺寸 φD×L(mm)	tan δ	额定纹波电流 (Arms/85°C, 120Hz)	产品型号	WV (Vdc)	Cap (μF)	尺寸 φD×L(mm)	tan δ	额定纹波电流 (Arms/85°C, 120Hz)	产品型号
10	39,000	35×50	0.60	4.70	LB100M5B393MA50	63	5,600	35×50	0.20	3.00	LB630M5B562MA50
	82,000	35×80	0.60	7.40	LB100M5B823MA80		10,000	35×80	0.25	4.00	LB630M5B103MA80
	100,000	35×100	0.70	8.00	LB100M5B104MAA0		15,000	35×100	0.25	5.30	LB630M5B153MAA0
	120,000	35×120	0.70	9.40	LB100M5B124MAC0		18,000	35×120	0.25	6.20	LB630M5B183MAC0
	150,000	50×80	0.90	9.80	LB100M5C154MC80		22,000	50×80	0.30	6.50	LB630M5C223MC80
	220,000	50×100	1.00	12.1	LB100M5C224MCA0		33,000	50×100	0.35	8.10	LB630M5C333MCA0
	270,000	50×120	1.20	13.6	LB100M5C274MCC0		39,000	50×120	0.35	9.60	LB630M5C393MCC0
	390,000	63.5×100	1.50	15.3	LB100M5C394MDA0		47,000	63.5×100	0.40	10.2	LB630M5C473MDA0
	470,000	63.5×120	2.00	16.0	LB100M5C474MDC0		68,000	63.5×120	0.40	13.3	LB630M5C683MDC0
	560,000	76.2×100	2.50	17.3	LB100M5C564MEA0		100,000	76.2×120	0.45	17.1	LB630M5C104MEC0
680,000	76.2×120	3.00	18.7	LB100M5C684MEC0	120,000	76.2×140	0.50	19.0	LB630M5C124MEE0		
150,000	89×140	0.55	22.0	LB630M5C154MFE0	150,000	89×140	0.55	22.0	LB630M5C154MFE0		
16	27,000	35×50	0.45	4.20	LB160M5B273MA50	80	3,300	35×50	0.15	2.50	LB800M5B332MA50
	56,000	35×80	0.60	6.50	LB160M5B563MA80		6,800	35×80	0.20	3.70	LB800M5B682MA80
	82,000	35×100	0.70	8.00	LB160M5B823MAA0		10,000	35×100	0.20	4.90	LB800M5B103MAA0
	100,000	35×120	0.70	9.60	LB160M5B104MAC0		12,000	35×120	0.20	5.40	LB800M5B123MAC0
	120,000	50×80	0.80	9.60	LB160M5C124MC80		15,000	50×80	0.25	6.00	LB800M5C153MC80
	150,000	50×100	0.90	11.2	LB160M5C154MCA0		22,000	50×100	0.30	7.10	LB800M5C223MCA0
	220,000	50×120	1.00	14.2	LB160M5C224MCC0		27,000	50×120	0.30	8.60	LB800M5C273MCC0
	270,000	63.5×100	1.20	15.3	LB160M5C274MDA0		33,000	63.5×100	0.35	9.30	LB800M5C333MDA0
	330,000	63.5×120	1.30	17.1	LB160M5C334MDC0		47,000	63.5×120	0.35	12.0	LB800M5C473MDC0
	390,000	76.2×100	1.60	18.0	LB160M5C394MEA0		68,000	76.2×120	0.35	15.4	LB800M5C683MEC0
470,000	76.2×120	1.80	19.3	LB160M5C474MEC0	82,000	76.2×140	0.35	18.1	LB800M5C823MEE0		
560,000	76.2×140	2.00	20.7	LB160M5C564MEE0	100,000	89×140	0.40	21.0	LB800M5C104MFE0		
25	18,000	35×50	0.35	4.00	LB250M5B183MA50	100	2,200	35×50	0.10	2.50	LB101M5B222MA50
	39,000	35×80	0.40	6.20	LB250M5B393MA80		4,700	35×80	0.15	3.40	LB101M5B472MA80
	47,000	35×100	0.40	7.40	LB250M5B473MAA0		6,800	35×100	0.15	4.20	LB101M5B682MAA0
	56,000	35×120	0.45	8.30	LB250M5B563MAC0		8,200	35×120	0.15	5.00	LB101M5B822MAC0
	82,000	50×80	0.50	9.70	LB250M5C823MC80		10,000	50×80	0.20	5.20	LB101M5C103MC80
	100,000	50×100	0.60	10.8	LB250M5C104MCA0		18,000	50×120	0.20	8.10	LB101M5C183MCC0
	120,000	50×120	0.60	12.8	LB250M5C124MCC0		22,000	63.5×100	0.25	8.60	LB101M5C223MDA0
	180,000	63.5×100	0.75	14.7	LB250M5C184MDA0		27,000	63.5×120	0.25	10.3	LB101M5C273MDC0
	220,000	63.5×120	0.80	16.8	LB250M5C224MDC0		33,000	76.2×100	0.25	11.1	LB101M5C333MEA0
	270,000	76.2×100	0.90	18.3	LB250M5C274MEA0		39,000	76.2×120	0.25	12.4	LB101M5C393MEC0
330,000	76.2×120	1.00	20.7	LB250M5C334MEC0	47,000	76.2×140	0.25	14.3	LB101M5C473MEE0		
390,000	76.2×140	1.20	22.1	LB250M5C394MEE0	68,000	89×140	0.30	18.0	LB101M5C683MFE0		
560,000	89×140	1.50	25.8	LB250M5C564MFE0	160	3,300	35×120	0.25	14.0	LB161M5B332MAC0	
35	15,000	35×50	0.30	3.90		LB350M5B153MA50	3,890	50×75	0.25	14.4	LB161M5C392MC75
	33,000	35×80	0.40	6.00		LB350M5B333MA80	4,700	50×75	0.25	15.8	LB161M5C472MC75
	39,000	35×100	0.40	7.00		LB350M5B393MAA0	5,600	50×96	0.25	19.0	LB161M5C562MC96
	47,000	35×120	0.45	8.00		LB350M5B473MAC0	6,800	50×96	0.25	21.0	LB161M5C682MC96
	68,000	50×80	0.50	9.00		LB350M5C683MC80	8,200	50×115	0.25	24.7	LB161M5C822MCB5
	82,000	50×100	0.55	10.3		LB350M5C823MCA0	10,000	63.5×96	0.25	28.0	LB161M5C103MD96
	120,000	50×120	0.60	12.8		LB350M5C124MCC0	12,000	63.5×96	0.25	30.6	LB161M5C123MD96
	150,000	63.5×100	0.70	14.0		LB350M5C154MDA0	15,000	63.5×130	0.25	38.6	LB161M5C153MDD0
	180,000	63.5×120	0.70	16.6		LB350M5C184MDC0	18,000	63.5×130	0.25	42.2	LB161M5C183MDD0
	220,000	76.2×100	0.75	17.3	LB350M5C224MEA0	22,000	76.2×130	0.25	49.4	LB161M5C223MED0	
270,000	76.2×120	0.80	19.8	LB350M5C274MEC0	27,000	76.2×130	0.25	54.7	LB161M5C273MED0		
330,000	76.2×140	0.90	22.5	LB350M5C334MEE0	33,000	89×130	0.25	64.2	LB161M5C333MFD0		
470,000	89×140	1.00	28.3	LB350M5C474MFE0	38,900	89×155	0.25	75.3	LB161M5C393MFF5		
50	10,000	35×50	0.25	4.10	LB500M5B103MA50	200	2,200	35×100	0.25	10.6	LB201M5B222MAA0
	18,000	35×80	0.25	5.20	LB500M5B183MA80		2,700	35×120	0.25	12.7	LB201M5B272MAC0
	22,000	35×100	0.30	5.90	LB500M5B223MAA0		3,300	50×75	0.25	13.3	LB201M5C332MC75
	27,000	35×120	0.35	6.60	LB500M5B273MAC0		3,890	50×75	0.25	14.4	LB201M5C392MC75
	39,000	50×80	0.40	7.40	LB500M5C393MC80		4,700	50×96	0.25	17.4	LB201M5C472MC96
	56,000	50×100	0.40	9.80	LB500M5C563MCA0		5,600	50×115	0.25	20.4	LB201M5C562MCB5
	68,000	50×120	0.45	11.1	LB500M5C683MCC0		6,800	50×130	0.25	23.7	LB201M5C682MCD0
	82,000	63.5×100	0.50	12.2	LB500M5C823MDA0		8,200	63.5×96	0.25	25.4	LB201M5C822MD96
	120,000	63.5×120	0.50	16.0	LB500M5C124MDC0		10,000	63.5×96	0.25	28.0	LB201M5C103MD96
	150,000	76.2×120	0.60	18.1	LB500M5C154MEC0		12,000	76.2×96	0.25	32.6	LB201M5C123ME96
180,000	76.2×140	0.70	19.5	LB500M5C184MEE0	15,000	76.2×96	0.25	39.0	LB201M5C153ME96		
270,000	89×140	0.80	24.6	LB500M5C274MFE0	18,000	76.2×130	0.25	44.6	LB201M5C183MED0		
					22,000	76.2×155	0.25	53.0	LB201M5C223MEF5		
					27,000	89×130	0.25	58.2	LB201M5C273MFD0		
					33,000	89×155	0.25	69.0	LB201M5C333MFF5		

LB系列

◆标准品一览表

WV (V _{dc})	Cap (μF)	尺寸 φD×L(mm)	tan δ	额定纹波电流 (A _{rms} /85°C, 120Hz)	产品型号
250	1500	35×100	0.25	8.7	LB251M5B152MAA0
	1800	35×100	0.25	9.5	LB251M5B182MAA0
	2200	50×75	0.25	10.8	LB251M5C222MC75
	2700	50×75	0.25	12.0	LB251M5C272MC75
	3300	50×96	0.25	14.6	LB251M5C332MC96
	3890	50×115	0.25	17.0	LB251M5C392MCB5
	4700	63.5×96	0.25	19.2	LB251M5C472MD96
	5600	63.5×96	0.25	21.0	LB251M5C562MD96
	6800	63.5×115	0.25	24.7	LB251M5C682MDB5
	8200	63.5×115	0.25	27.1	LB251M5C822MDB5
	10000	63.5×130	0.25	31.5	LB251M5C103MDD0
	12000	76.2×115	0.25	34.8	LB251M5C123MEB5
	15000	76.2×130	0.25	40.8	LB251M5C153MED0
	18000	76.2×155	0.25	47.8	LB251M5C183MEF5
20000	89×155	0.25	56.5	LB251M5C223MFF5	
350	389	35×50	0.20	4.5	LB351M5B391MA50
	470	35×85	0.20	5.8	LB351M5B471MA85
	560	35×85	0.20	6.4	LB351M5B561MA85
	680	35×85	0.20	7.0	LB351M5B681MA85
	820	35×100	0.20	8.3	LB351M5B821MAA0
	1000	35×100	0.20	9.2	LB351M5B102MAA0
	1200	50×75	0.20	10.3	LB351M5C122MC75
	1500	50×75	0.20	11.5	LB351M5C152MC75
	1800	50×96	0.20	13.9	LB351M5C182MC96
	2200	50×96	0.20	15.4	LB351M5C222MC96
	2700	50×130	0.20	19.3	LB351M5C272MCD0
	3300	50×130	0.20	21.4	LB351M5C332MCD0
	3890	63.5×115	0.20	24.2	LB351M5C392MDB5
	4700	63.5×130	0.20	27.9	LB351M5C472MDD0
5600	76.2×115	0.20	30.7	LB351M5C562MEB5	
6800	76.2×130	0.20	35.4	LB351M5C682MEF5	
8200	76.2×155	0.20	41.7	LB351M5C822MEF5	
10000	89×155	0.20	49.0	LB351M5C103MFF5	
12000	89×155	0.20	54.1	LB351M5C123MFF5	
15000	89×189	0.20	66.2	LB351M5C153MFK0	
18000	89×220	0.20	77.9	LB351M5C183MFn0	
400	330	35×50	0.20	4.1	LB401M5B331MA50
	389	35×85	0.20	5.3	LB401M5B391MA85
	470	35×85	0.20	5.8	LB401M5B471MA85
	560	35×85	0.20	6.4	LB401M5B561MA85
	680	35×100	0.20	7.6	LB401M5B681MAA0
	820	35×100	0.20	8.3	LB401M5B821MAA0
	1000	50×75	0.20	9.4	LB401M5C102MC75
	1200	50×75	0.20	10.3	LB401M5C122MC75
	1500	50×96	0.20	12.7	LB401M5C152MC96
	1800	50×96	0.20	13.9	LB401M5C182MC96

WV (V _{dc})	Cap (μF)	尺寸 φD×L(mm)	tan δ	额定纹波电流 (A _{rms} /85°C, 120Hz)	产品型号	
250	2200	50×130	0.20	17.4	LB401M5C222MCD0	
	2700	63.5×96	0.20	18.8	LB401M5C272MD96	
	3300	63.5×115	0.20	22.2	LB401M5C332MDB5	
	3890	63.5×130	0.20	25.4	LB401M5C392MDD0	
	4700	76.2×115	0.20	28.2	LB401M5C472MEB5	
	5600	76.2×130	0.20	32.2	LB401M5C562MED0	
	6800	76.2×155	0.20	38.0	LB401M5C682MEF5	
	8200	89×155	0.20	44.4	LB401M5C822MFF5	
	10000	89×155	0.20	49.4	LB401M5C103MFF5	
	12000	89×189	0.20	59.1	LB401M5C123MFK0	
	15000	89×220	0.20	71.1	LB401M5C153MFn0	
	450	270	35×50	0.20	3.7	LB451M5B271MA50
		330	35×85	0.20	4.9	LB451M5B331MA85
		389	35×85	0.20	5.3	LB451M5B391MA85
470		35×85	0.20	5.8	LB451M5B471MA85	
560		35×100	0.20	6.9	LB451M5B561MAA0	
680		35×100	0.20	7.6	LB451M5B681MAA0	
820		50×75	0.20	8.6	LB451M5C821MC75	
1000		50×75	0.20	9.4	LB451M5C102MC75	
1200		50×96	0.20	11.4	LB451M5C122MC96	
1500		50×115	0.20	13.7	LB451M5C152MCB5	
1800		50×130	0.20	15.8	LB451M5C182MCD0	
2200		63.5×96	0.20	17.0	LB451M5C222MD96	
2700		63.5×115	0.20	20.2	LB451M5C272MDB5	
3300		63.5×130	0.20	23.4	LB451M5C332MDD0	
3890	76.2×115	0.20	25.6	LB451M5C392MEB5		
4700	76.2×130	0.20	29.4	LB451M5C472MED0		
5600	76.2×155	0.20	34.6	LB451M5C562MEF5		
6800	89×155	0.20	40.5	LB451M5C682MFF5		
8200	89×155	0.20	44.6	LB451M5C822MFF5		
10000	89×189	0.20	53.9	LB451M5C103MFK0		
12000	89×220	0.20	63.8	LB451M5C123MFn0		
500	1200	50×115	0.20	12.2	LB501M5C122MCB5	
	1500	50×130	0.20	14.3	LB501M5C152MCD0	
	1800	63.5×96	0.20	13.9	LB501M5C152MD96	
	2200	63.5×115	0.20	16.4	LB501M5C182MDB5	
	2700	63.5×130	0.20	19.0	LB501M5C222MDD0	
	3300	76.2×130	0.20	21.3	LB501M5C272MEB5	
	3890	76.2×155	0.20	24.6	LB501M5C332MED0	
	4700	76.2×170	0.20	28.7	LB501M5C392MEF5	
	5600	76.2×190	0.20	32.9	LB501M5C472MEH0	
	6800	89×130	0.20	31.4	LB501M5C472MFD0	
	8200	89×155	0.20	37.8	LB501M5C562MEK0	
	10000	89×155	0.20	36.7	LB501M5C562MFF5	
	12000	89×170	0.20	41.8	LB501M5C682MFF5	
	15000	89×189	0.20	48.5	LB501M5C822MFK0	
18000	100×170	0.20	47.1	LB501M5C822MGH0		
22000	89×220	0.20	57.9	LB501M5C103MFn0		
27000	100×189	0.20	54.3	LB501M5C103MGK0		
33000	100×220	0.20	64.1	LB501M5C123MGN0		
600	1200	63.5×96	0.20	6.7	LB601M5C122MD96	
	1500	63.5×115	0.20	8.1	LB601M5C152MDB5	
	1800	76.2×96	0.20	8.8	LB601M5C182ME96	
	2200	76.2×115	0.20	10.4	LB601M5C222MEB5	
	2700	76.2×130	0.20	12.1	LB601M5C272MED0	
	3300	89×130	0.20	14.3	LB601M5C332MFD0	
	4700	89×155	0.20	18.3	LB601M5C472MFF5	

◆额定纹波电流频率修正系数

纹波频率与标准品一览表的规定值相异时, 请使用小于乘以以下表系数所得之值。

额定电压 (V _{dc})	φD (mm)	频率 (Hz)					
		50	120	300	1k	10k	50k
10~50	φ35~φ89	0.95	1.00	1.03	1.05	1.09	1.12
63~80	φ50~φ89						
100	φ63.5~φ89						
63~80	φ35	0.90	1.00	1.06	1.10	1.18	1.22
100	φ50						
100	φ35						
100	φ35	0.82	1.00	1.12	1.22	1.30	1.33

※ 铝电解电容器由于在纹波电流叠加时自我发热、温度上升而老化, 每升温 5°C 寿命减少一半。
 要想保持长寿命请在使用过程中降低纹波电流。