



JIANGSU CHANGJIANG ELECTRONICS TECHNOLOGY CO., LTD

SOT-89 Encapsulate Three Terminal Voltage Regulator

CJ79L06 Three-terminal negative voltage regulator

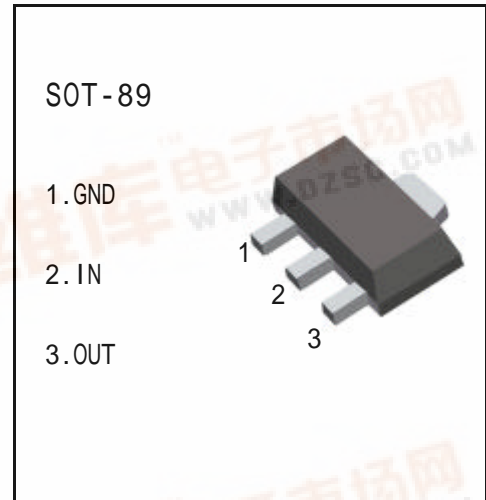
FEATURES

Maximum Output current

I_{OM} : 0.1 A

Output voltage

V_O : -6 V



ABSOLUTE MAXIMUM RATINGS (Operating temperature range applies unless otherwise specified)

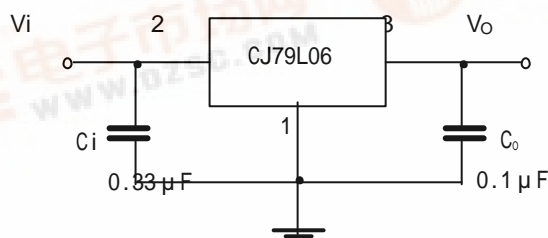
Parameter	Symbol	Value	Units
Input Voltage	V_i	-30	V
Operating Junction Temperature Range	T_{OPR}	0—+125	
Storage Temperature Range	T_{STG}	-55—+150	

ELECTRICAL CHARACTERISTICS

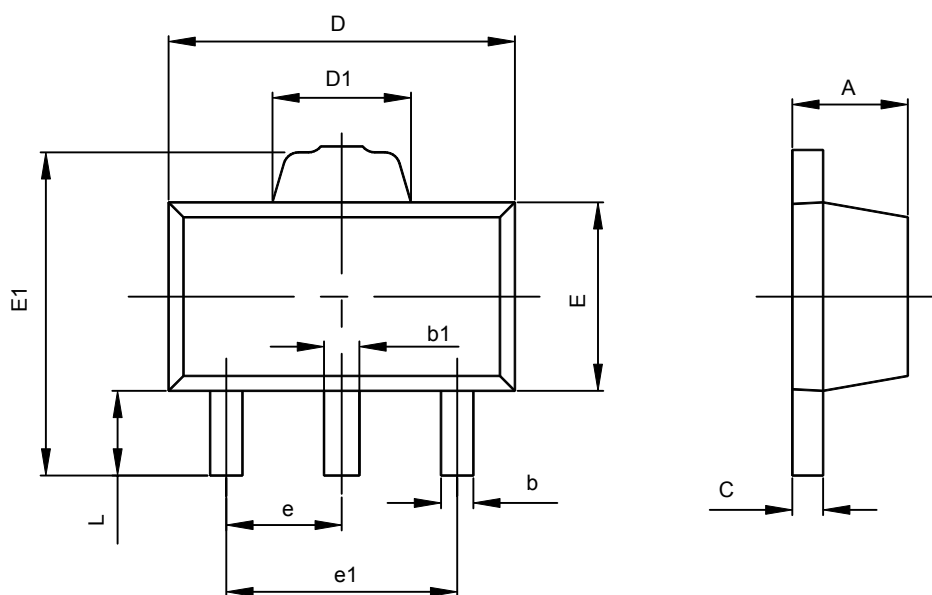
($V_i = -12V, I_o = 40mA, 0 < T_j < 125$, $C_1 = 0.33 \mu F, C_o = 0.1 \mu F$, unless otherwise specified)

Parameter	Symbol	Test conditions	MIN	TYP	MAX	UNIT
Output voltage	V_o	$V_{IN} = -12V, I_o = 40mA$	-5.75	-6.0	-6.25	V
Line Regulation	$V_o - V_{IN}$	$V_{IN} = -8 \sim -20V, I_o = 40mA$		20	175	mV
Load Regulation	$V_o - I_o$	$V_{IN} = -12V, I_o = 1 \sim 100mA$		21	80	mV
Quiescent Current	I_q	$V_{IN} = -12V, I_o = 40mA$			6.0	mA
Ripple Rejection	RR	$V_{IN} = -9V \sim -19V, I_o = 40mA, e_{iN} = 1V_{P-P}, f = 120Hz$	40	48		dB
Output Noise Voltage	V_{NO}	$V_{IN} = -12V, f = 10Hz \sim 100KH, I_o = 40mA$		44		μV

TYPICAL APPLICATION



SOT-89-3L PACKAGE OUTLINE DIMENSIONS



Symbol	Dimensions In Millimeters		Dimensions In Inches	
	Min	Max	Min	Max
A	1.400	1.600	0.055	0.063
b	0.320	0.520	0.013	0.020
b1	0.360	0.560	0.014	0.022
c	0.350	0.440	0.014	0.017
D	4.400	4.600	0.173	0.181
D1	1.400	1.800	0.055	0.071
E	2.300	2.600	0.091	0.102
E1	3.940	4.250	0.155	0.167
e	1.500TYP		0.060TYP	
e1	2.900	3.100	0.114	0.122
L	0.900	1.100	0.035	0.043