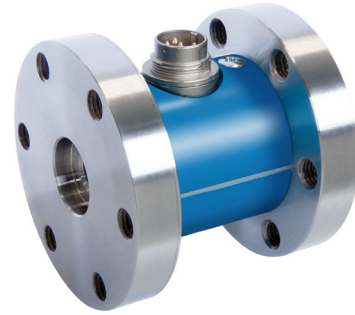


Model AT101 Axial Torsion Force & Torque Transducer

- Capacities: Force (kN) / Torque (Nm) - 0.5/5, 1/10, 1/30; 20/20, 0.5/50, 2/50
- Measures force & torque in one package
- 8 mm thru-hole



OPTIONS

Internal Shunt Resistor – 100% output

CAPACITIES

| MODEL | FORCE | TORQUE |
|----------------|--------|--------|
| AT101 - 0.5/5 | 0.5 kN | 5 Nm |
| AT101 - 1/10 | 1 kN | 10 Nm |
| AT101 - 1/30 | 1 kN | 30 Nm |
| AT101 - 20/20 | 20 kN | 20 Nm |
| AT101 - 0.5/50 | 0.5 kN | 50 Nm |
| AT101 - 2/50 | 2 kN | 50 Nm |

SPECIFICATIONS

| | |
|----------------------------------|---------------|
| ACCURACY – (MAX ERROR) | |
| Nonlinearity – Torque - %FS | +/-0.2 |
| Hysteresis – Torque - %FS | +/-0.2 |
| Nonlinearity – Torque - %FS | +/-0.3 |
| Hysteresis – Torque - %FS | +/-0.3 |
| Hysteresis - %FS | +/-0.2 |
| Nonrepeatability - % RO | +/-0.1 |
| Cross talk - % | <1% |
| TEMPERATURE | |
| Effect on Zero - % RO/°C | +/-0.02 |
| Effect on Output - %/°C | +/-0.02 |
| Compensated Range - °C | -5 to +45 |
| Operating Range - °C | -15 to +55 |
| ELECTRICAL | |
| Output – mV/V | 1 |
| Excitation Voltage – VDC | 2-12 |
| Bridge Resistance – Torque - Ohm | 350 |
| Bridge Resistance – Force - Ohm | 700 |
| Electrical Connection | 12-pin Binder |
| MECHANICAL | |
| Safe Overload - % RO | 150 |
| IP Rating | 50 |

DIMENSIONS

