

Test Report

Report No. RHS01F021236001

Page 1 of 6

Applicant SHENZHEN KUAYUE ELECTRONIC CO.,LTD
Address KUAYUE INDUSTRIAL PARK, NO.1 XINGYE RODA,SHIYAN SHILONGZI
COMMUNITY,BAOAN DISTRICT,SHENZHEN,CHINA

The following sample(s) and sample information was/were submitted and identified by/on the behalf of the client

Sample Name THERMAL PAL
Part No. HC/HCT/SC
Color BLACK, BLUE,GRAY-WHITE
Sample Received Date Nov. 22, 2013
Testing Period Nov. 22, 2013 to Nov. 26, 2013

Test Requested As specified by client, to test Lead(Pb), Cadmium(Cd), Mercury(Hg), Hexavalent Chromium(Cr(VI)), Polybrominated Biphenyls(PBBs), Polybrominated Diphenyl Ethers(PBDEs), Fluorine(F), Chlorine(Cl), Bromine(Br), Iodine(I) in the submitted sample(s).

Test Method Please refer to the following page(s).

Test Result(s) Please refer to the following page(s).

Tested by

Rick Lin

Reviewed by

Vangar He

approved by

Danny Liu

Date

Nov. 26, 2013



Danny Liu
Technical Manager

No. 1012250387

Centre Testing International (Shenzhen) Co., Ltd. Hongwei Industrial Zone, Bao'an 70 District, Shenzhen, Guangdong, China

Test Report

Report No. RHS01F021236001

Page 2 of 6

Test Method

Test Item(s)	Test Method	Measured Equipment(s)
Lead(Pb)	IEC 62321:2008 Ed.1 Sec.8	ICP-OES
Cadmium(Cd)	IEC 62321:2008 Ed.1 Sec.8	ICP-OES
Mercury(Hg)	IEC 62321:2008 Ed.1 Sec.7	ICP-OES
Hexavalent Chromium(Cr(VI))	IEC 62321:2008 Ed.1 Annex C	UV-Vis
Polybrominated Biphenyls(PBBs)	IEC 62321:2008 Ed.1 Annex A	GC-MS
Polybrominated Diphenyl Ethers(PBDEs)	IEC 62321:2008 Ed.1 Annex A	GC-MS
Fluorine(F)	Refer to BS EN 14582:2007	IC
Chlorine(Cl)	Refer to BS EN 14582:2007	IC
Bromine(Br)	Refer to BS EN 14582:2007	IC
Iodine(I)	Refer to BS EN 14582:2007	IC

Test Result(s)

Tested Item(s)	Result	MDL
Lead(Pb)	N.D.	2 mg/kg
Cadmium (Cd)	N.D.	2 mg/kg
Mercury(Hg)	N.D.	2 mg/kg
Hexavalent Chromium(Cr(VI))	N.D.	2 mg/kg

Tested Item(s)	Result	MDL
Polybrominated Biphenyls(PBBs)		
Monobromobiphenyl	N.D.	5 mg/kg
Dibromobiphenyl	N.D.	5 mg/kg
Tribromobiphenyl	N.D.	5 mg/kg
Tetrabromobiphenyl	N.D.	5 mg/kg
Pentabromobiphenyl	N.D.	5 mg/kg
Hexabromobiphenyl	N.D.	5 mg/kg
Heptabromobiphenyl	N.D.	5 mg/kg
Octabromobiphenyl	N.D.	5 mg/kg
Nonabromobiphenyl	N.D.	5 mg/kg
Decabromobiphenyl	N.D.	5 mg/kg

Test Report

Report No. RHS01F021236001

Page 3 of 6

Tested Item(s)	Result	MDL
Polybrominated Diphenyl Ethers(PBDEs)		
Monobromodiphenyl ether	N.D.	5 mg/kg
Dibromodiphenyl ether	N.D.	5 mg/kg
Tribromodiphenyl ether	N.D.	5 mg/kg
Tetrabromodiphenyl ether	N.D.	5 mg/kg
Pentabromodiphenyl ether	N.D.	5 mg/kg
Hexabromodiphenyl ether	N.D.	5 mg/kg
Heptabromodiphenyl ether	N.D.	5 mg/kg
Octabromodiphenyl ether	N.D.	5 mg/kg
Nonabromodiphenyl ether	N.D.	5 mg/kg
Decabromodiphenyl ether	N.D.	5 mg/kg
Tested Item(s)	Result	MDL
Halogen(s)		
Fluorine (F)	N.D.	10 mg/kg
Chlorine (Cl)	N.D.	10 mg/kg
Bromine (Br)	N.D.	10 mg/kg
Iodine (I)	N.D.	10 mg/kg

Tested Sample/Part Description Deep gray silica gel

Note: **The sample(s) had been dissolved totally tested for Lead, Cadmium, Mercury.**

-MDL = Method Detection Limit

-N.D. = Not Detected (<MDL)

-mg/kg = ppm = parts per million

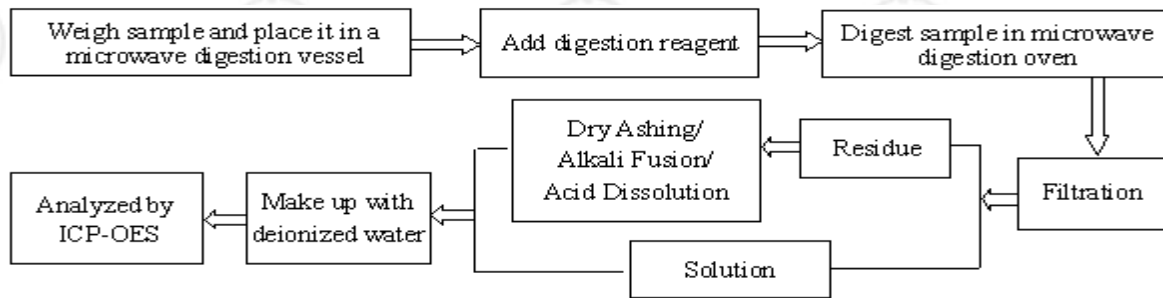
Test Report

Report No. RHS01F021236001

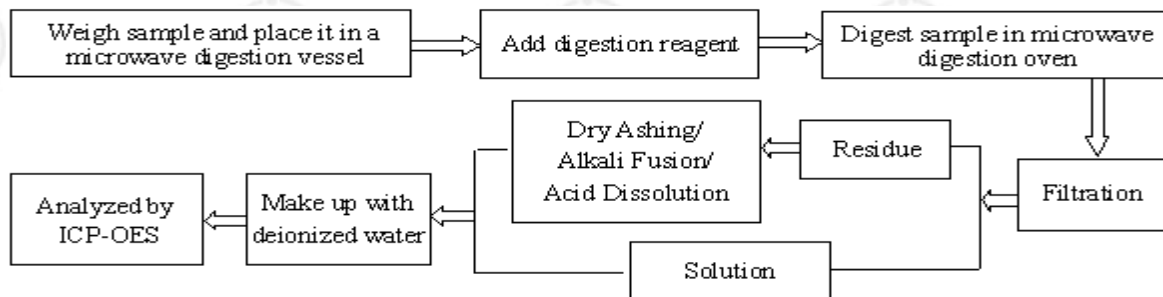
Page 4 of 6

Test Process

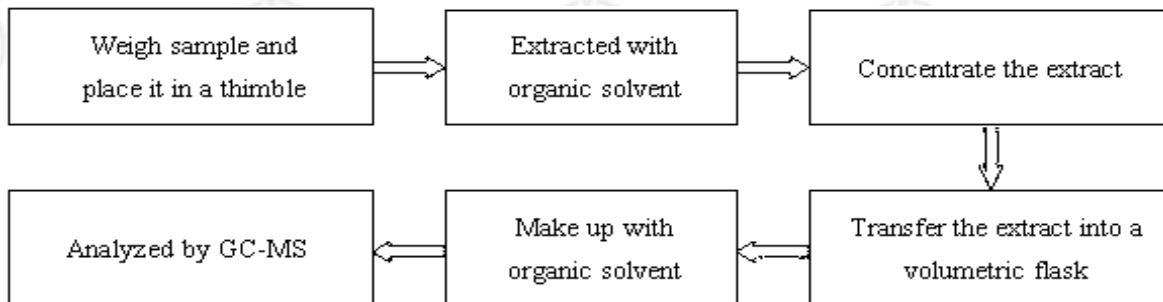
1. Lead(Pb), Cadmium(Cd)



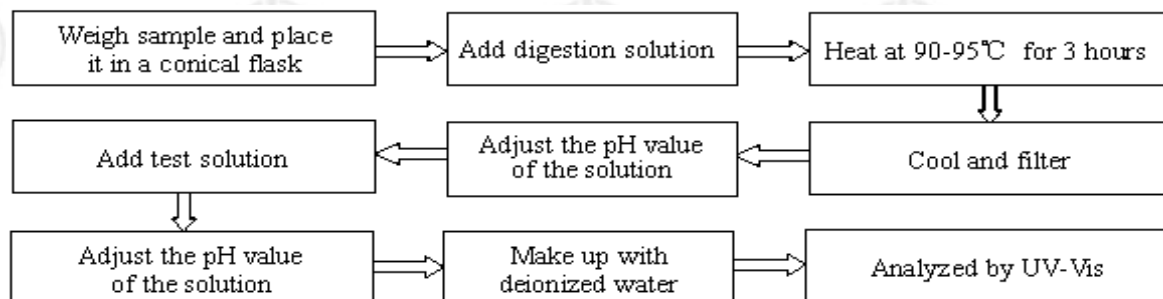
2. Mercury(Hg)



3. Polybrominated Biphenyls(PBBs), Polybrominated Diphenyl Ethers(PBDEs)



4. Hexavalent Chromium(Cr(VI))

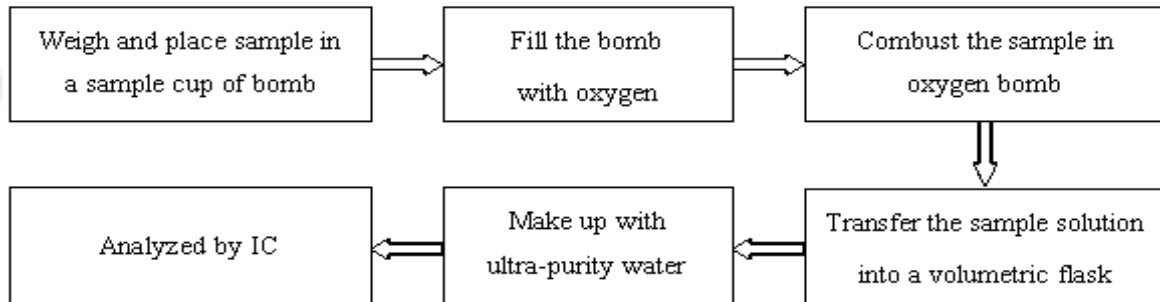


Test Report

Report No. RHS01F021236001

Page 5 of 6

5. Fluorine(F), Chlorine(Cl), Bromine(Br), Iodine(I)

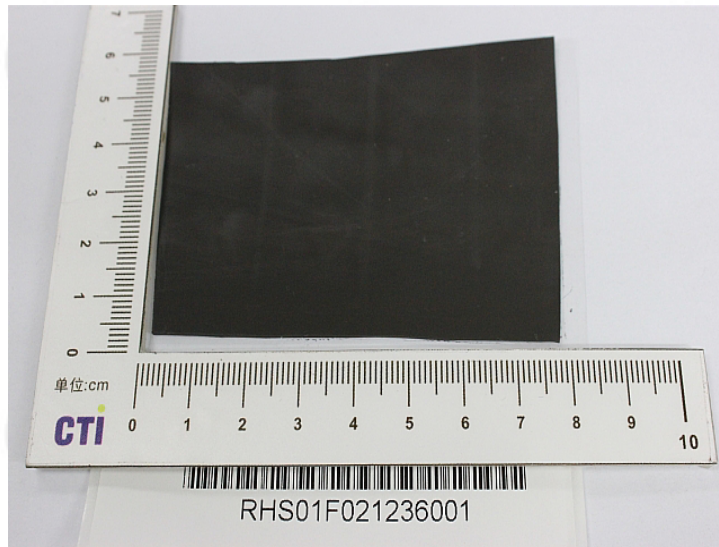


Test Report

Report No. RHS01F021236001

Page 6 of 6

Photo(s) of the sample(s)



*** End of report ***

The test report is effective only with both signature and specialized stamp. The result(s) shown in this report refer only to the sample(s) tested. Without written approval of CTI, this report can't be reproduced except in full.