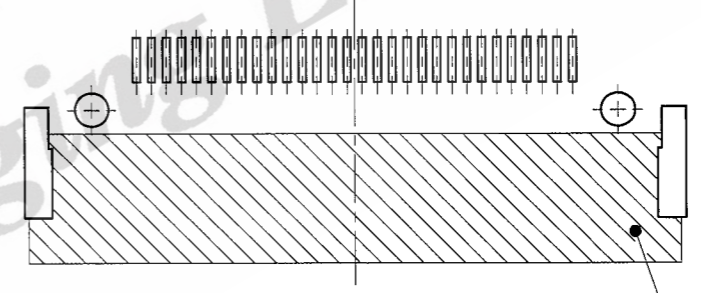
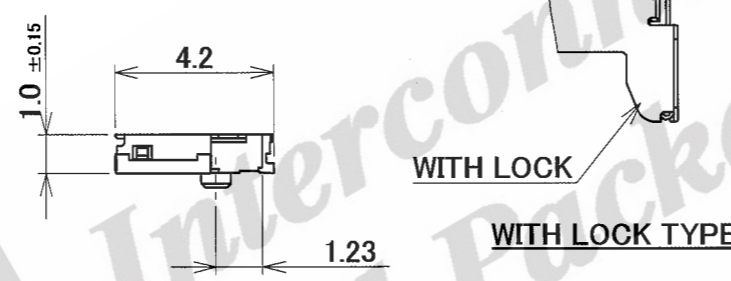
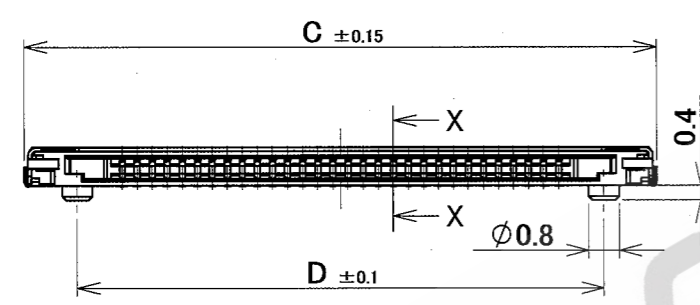
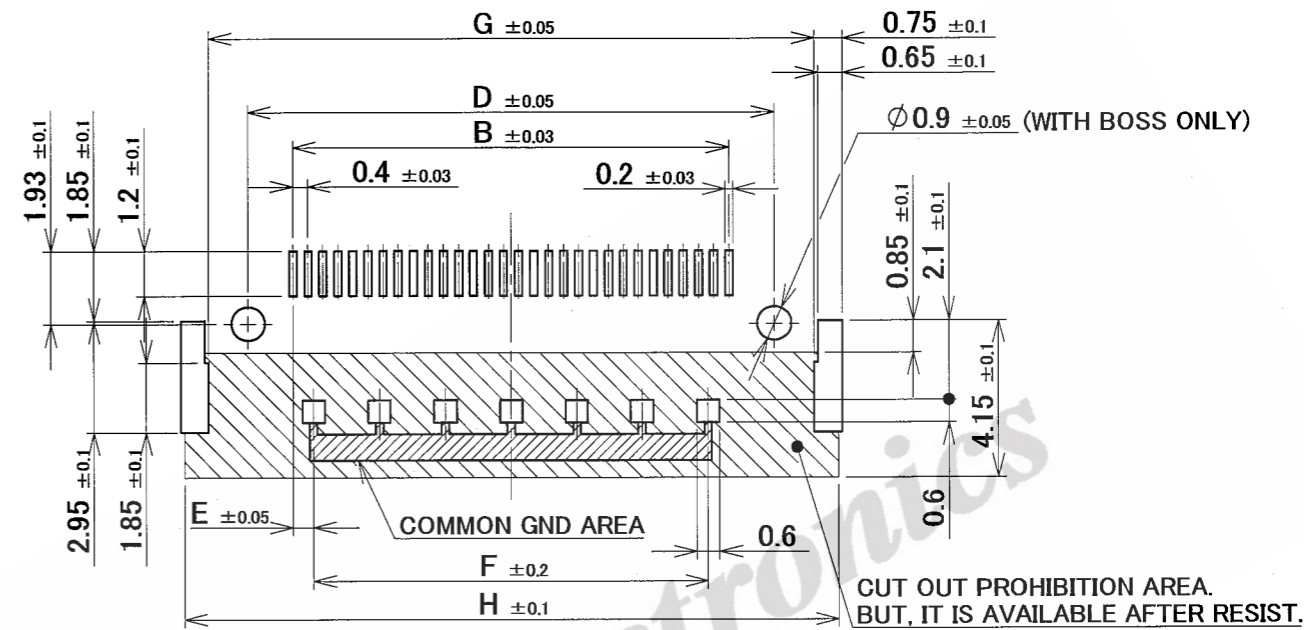
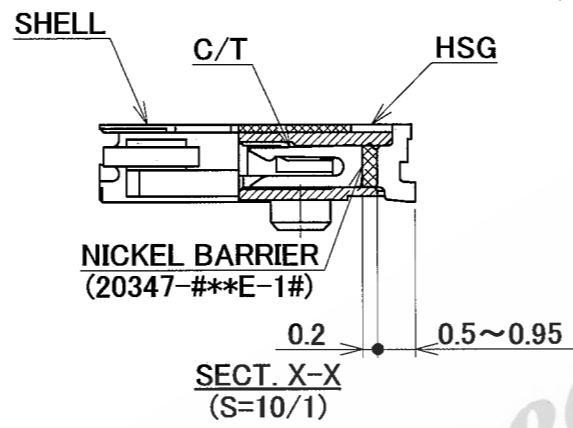
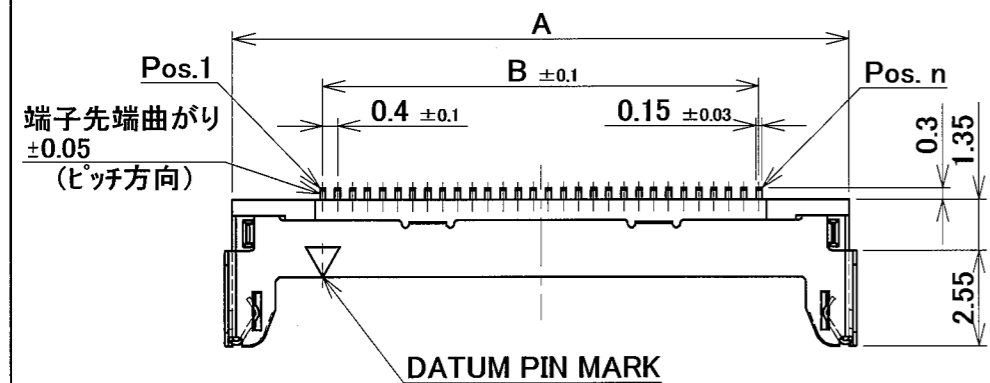


PART NO.	POS.	A	B	C	D	E	F	G	H
20347-#10E-##	10	8.4	3.6	8.8	6.0	0.925	1.75	8.1	9.4
20347-#15E-##	15	10.4	5.6	10.8	8.0	1.05	3.5	10.1	11.4
20347-#20E-##	20	12.4	7.6	12.8	10.0	1.175	5.25	12.1	13.4
20347-#25E-##	25	14.4	9.6	14.8	12.0	1.3	7.0	14.1	15.4
20347-#30E-##	30	16.4	11.6	16.8	14.0	0.55	10.5	16.1	17.4
20347-#35E-##	35	18.4	13.6	18.8	16.0	0.675	12.25	18.1	19.4
20347-#40E-##	40	20.4	15.6	20.8	18.0	0.8	14.0	20.1	21.4

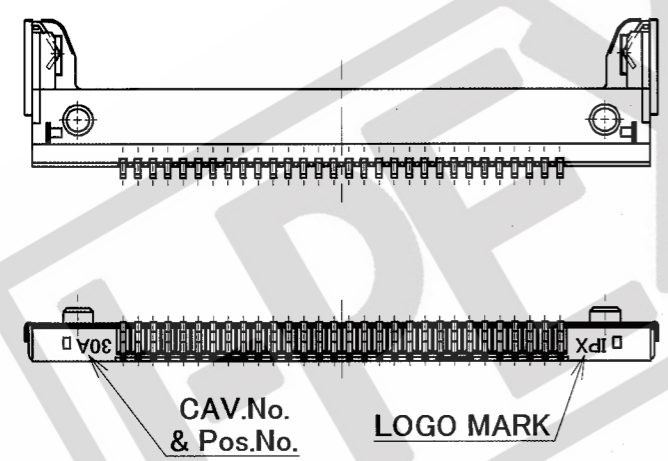


P/N : 20347-##*E-##

- 1 : WITH BOSS
- 2 : WITHOUT BOSS
- C/T FINISH 0 : ALL Au
- 1 : Ni Barrier(ALL Au)
- Pos.

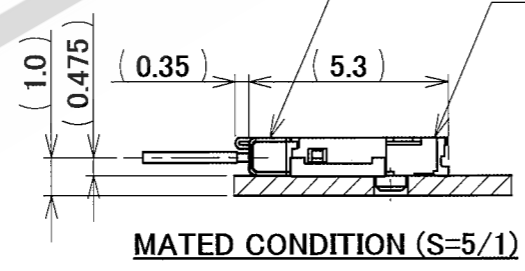
	SHELL FINISH	LOCK
0	Sn-Cu	WITHOUT
1	Sn	
2	Sn-Cu	WITH
3	Sn	

- NOTES.
- CONNECTOR TO BE MATED : P/N 20345-##*T-##
 - MATERIAL & FINISH
HOUSING : LCP(GF REINFORCED), UL94V-0, BLACK
CONTACT : PHOSPHOR BRONZE
Au 0.1 μm MIN. OVER Ni 1.27 μm MIN.
SHELL : PHOSPHOR BRONZE
Sn-Cu or Sn 1~5 μm OVER Ni 1.27 μm MIN.
 - COPLANARITY : 0.1 MAX.



CABLIN V PLUG
P/N 20345-##*T-##

CABLIN V RECE.
P/N 20347-##*E-##



GENERAL TOLERANCE	
6 MAX.	±0.2
6 OVER MAX. 30	±0.3
30 OVER MAX. 120	±0.5
ANGLE	±2°

18	Z0746	H.M.	Apr.10/07	EK	DESIGN'D BY	DATE		Interconnect and Packaging Electronics TOKYO, JAPAN		
17	Z06687	H.M.	DEC/13/06	E.K.	H.MASHIMA	MAR/07/03				
16	Z06613	H.M.	NOV/15/06	T.H.	CHK'D BY	DATE	TITLE CABLIN V RECE. ASS'Y	DWG. No. 20347		
15	Z06507	H.M.	SEP/27/06	E.K.	Y.H.	MAR/12/03				
14	Z06383	H.M.	AUG/07/06	T.H.	APP'D BY	DATE				
REV	ECN	BY	DATE	APP	K.K.	MAR/13/03				
REV.RECORD					CUSTOMER COPY	PROJECTION	SCALE	UNIT	SHEET	REV.
SERIES No.							5:1	mm	1/1	18