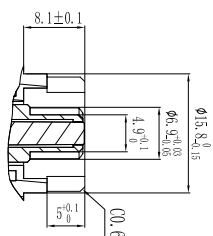
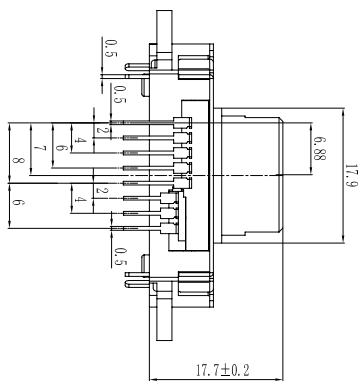


### 连接端口尺寸简图

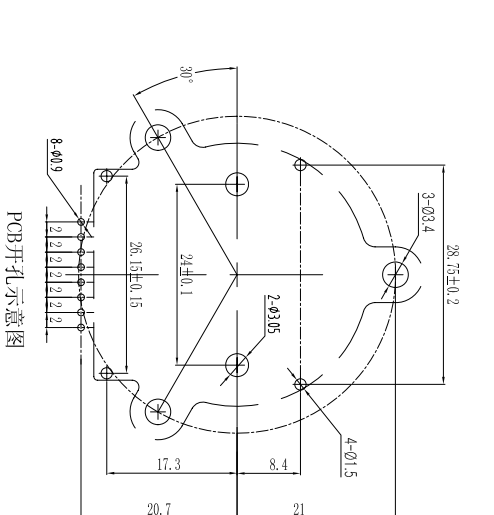
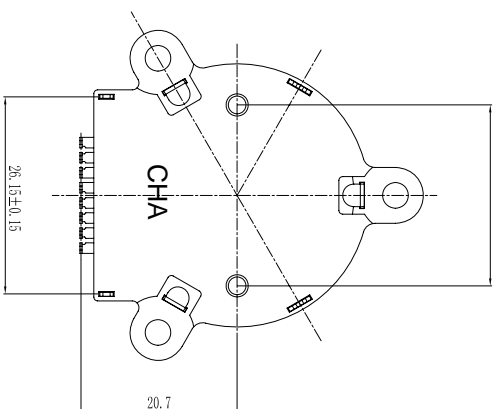
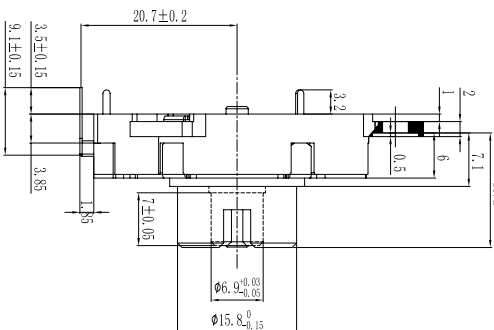
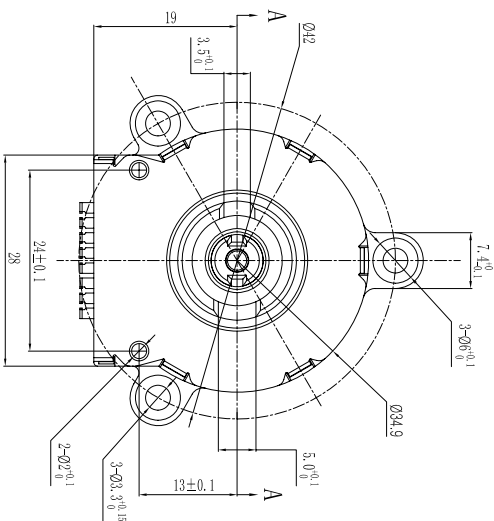


剖面 A-A

外轴左转角  
度数80°

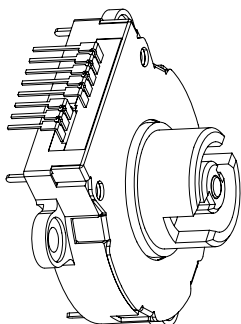
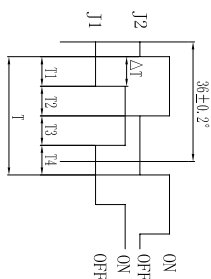
CCW → 0 → CW

外轴右转角  
度数80°



PCB开孔示意图

端子名称对照图



角度	80°	70°	60°	50°	40°	30°	20°	10°	0°	-10°	-20°	-30°	-40°	-50°	-60°	-70°	-80°
①																	
②																	
③																	
④																	
⑤																	
⑥																	
⑦																	
⑧																	
⑨																	
⑩																	
⑪																	
⑫																	
⑬																	
⑭																	
⑮																	
⑯																	
⑰																	
⑱																	
⑲																	
⑳																	
㉑																	
㉒																	
㉓																	
㉔																	
㉕																	
㉖																	
㉗																	
㉘																	
㉙																	
㉚																	
㉛																	
㉜																	
㉝																	
㉞																	
㉟																	
㊱																	
㊲																	
㊳																	
㊴																	
㊵																	
㊶																	
㊷																	
㊸																	
㊹																	
㊺																	
㊻																	
㊼																	
㊽																	
㊾																	
㊿																	

外码盘 (上码盘)

CCW CW

T1, T3=↑土↑  
T2, T4=PHASE DIFFERENC SHALL NOT BE RECHERSED

FCN (DCN) NO.	REV	DATE	DESCRIPTION	CHANGE	APPRO.	UNLESS OTHERWISE NOTED	Angle	±2°	DESIGN	设计	关卫卫	2013-06-20	品名	RE35旋转编码器-规格图
							30~	±0.3	CHECK	校对			料號	RE35旋转编码器
							10~30	±0.2	VERIFY	审核			圖號	A
							~10	±0.15	APPROVAL	批准			圖號	A
									SCALE				UNIT	mm
														A4

蘇州昭華電子有限公司