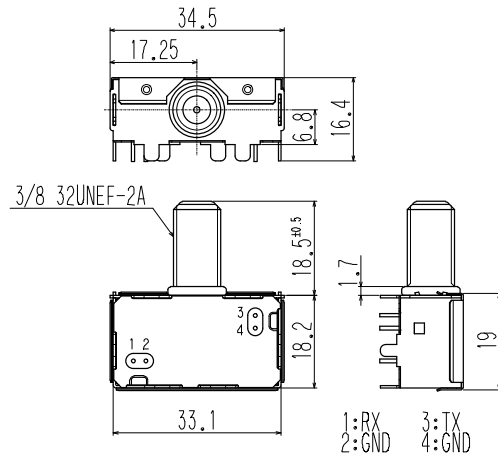
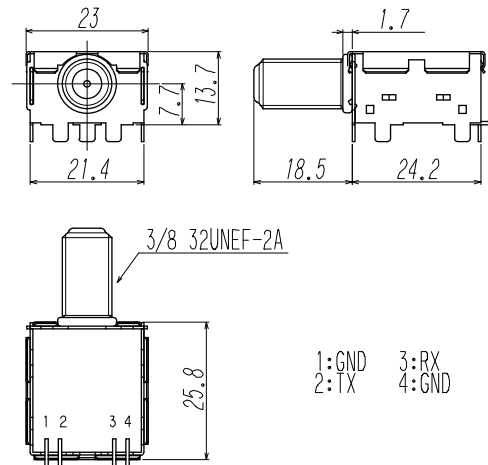
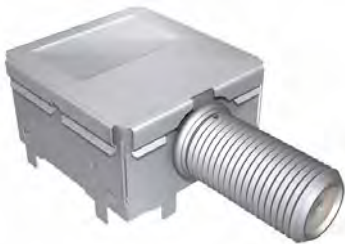


**TYPE DIP1A and DIP2A**



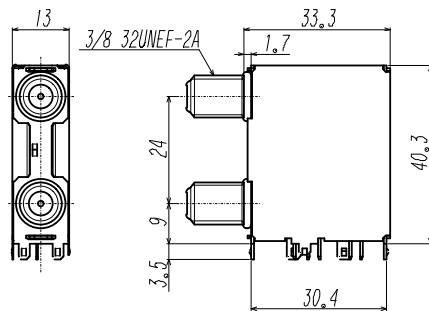
(Unit: mm)

**TYPE DIP1S**

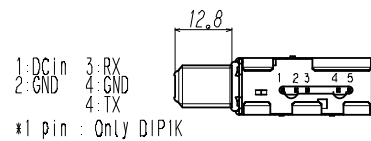


(Unit: mm)

**TYPE DIP1H and DIP1K**

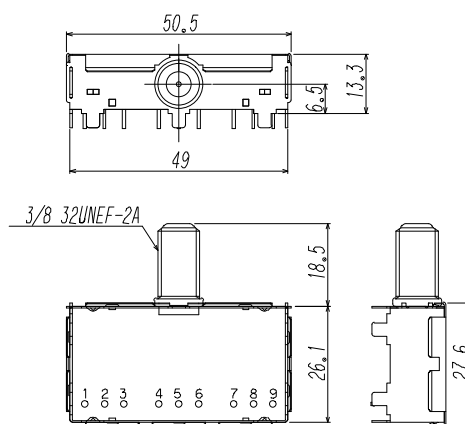


(Unit: mm)



The distributor is built into DIP1H. DIP1H型内置分配器、 The distributors and LNA are built into DIP1K. DIP1K型内置分配器和LNA

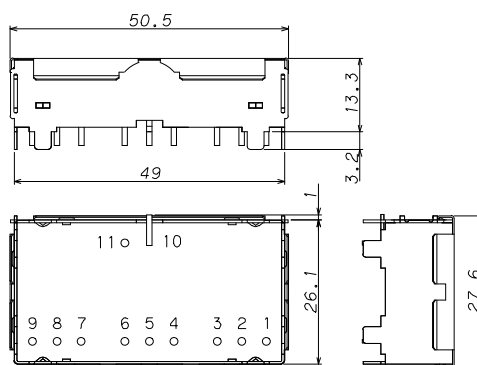
### TYPE TRP1A



- 1:GND    4:GND    7:GND
- 2:TX    5:RX    8:MoCA
- 3:GND    6:GND    9:GND

(Unit: mm)

### TYPE TRP1D



- 1:GND    5:TX    9:GND
- 2:RX    6:GND    10:Common
- 3:GND    7:GND    11:GND
- 4:GND    8:MoCA

(Unit: mm)

### Features

- Diplexer/Triplexer for digital CATV set top box and cable modem.
- Integrated type of Tx and Rx in the shield body with F connector.
- Low-profile : DIP1A and DIP1S, Narrow bottom area : DIP1H and DIP1K
- Connecting F type connector to cable and mounting TX and RX terminals on PCB ensure high performance diplexer.
- DIP1A with IEC61000-4-5 Level 4, UL60950-1 section 7 Lightning surge protection circuit.
- DIP1H has a surge protection circuit of IEC61000-4-5 level 4, and built-in distributor.
- DIP1K is LNA add to DIP1H.
- Designed to meet DOCSIS2.0, DOCSIS3.0,ANSI/SCTE.
- TRP1A for MoCA Set.
- RoHS compliant

### Applications

- Suitable for designing Open-cable set top box and Cable-Modem for Europe, USA and Asia
- Suitable for designing MoCA set top box

### Specifications 规格

Location	TOKO Parts.No.	Region of Applications	Pass-band		Lightning Surge Protection	DOCSIS
			Down Stream Filter	Up Stream Filter		
USA	#R975ABISN-1220	DIP1A	5-42(MHz)	54-1002(MHz)	IEC61000-4-5 Level4	DOCSIS3.0
	R1246ABIRN-1002	DIP1S	5-42(MHz)	54-1002(MHz)	IEC61000-4-5 Level4	DOCSIS3.0
	R1257ABNZN-1005	DIP2A	5-42(MHz)	BPF: 54-1002(MHz)	IEC61000-4-5 Level4	DOCSIS3.0, MoCA Rejection
	R1190ACVZN-1010	TRP1A	5-42(MHz)	BPF: 54-1002(MHz) Add MoCA BPF: 1125-1525(MHz)	IEC61000-4-5 Level4	DOCSIS3.0, MoCA1.1
	R1190ACVZN-1021	TRP1A	5-42(MHz)	BPF: 54-1002(MHz) Add MoCA BPF: 1125-1675(MHz)	IEC61000-4-5 Level4	DOCSIS3.0, MoCA2.0
	R1293ACTZN-1002A	TRP1D	5-42(MHz)	BPF: 54-1002(MHz) Add MoCA BPF: 1125-1675(MHz)	IEC61000-4-5 Level4	DOCSIS3.0, MoCA2.0
Euro China	#R975ABJUN-1221	DIP1A	5-65(MHz)	88-1002(MHz)	IEC61000-4-5 Level4	DOCSIS3.0
	R1246ABJTN-1001A	DIP1S	5-65(MHz)	88-1002(MHz)	IEC61000-4-5 Level4	DOCSIS3.0
	R1190ACVZN-1019	TRP1A	5-65(MHz)	BPF: 88-1002(MHz) Add MoCA BPF: 1125-1525(MHz)	IEC61000-4-5 Level4	DOCSIS3.0, MoCA1.1
Japan	#R975ABISN-1222	DIP1A	5-55(MHz)	90-1002(MHz)	IEC61000-4-5 Level4	DOCSIS3.0
	#R975ABISN-1204	DIP1A	5-65(MHz)	76-1002(MHz)	IEC61000-4-5 Level4	DOCSIS3.0
	R1086ACITN-1001	DIP1H	5-55(MHz)	90-860(MHz)	IEC61000-4-5 Level4	DOCSIS2.0, Distributor
	R1182ACIZN-1003	DIP1K	5-55(MHz)	90-860(MHz)	IEC61000-4-5 Level4	DOCSIS2.0, Distributor, LNA
KOREA	#R975ABJUN-1223	DIP1A	5-85(MHz)	108-1002(MHz)	IEC61000-4-5 Level4	DOCSIS3.0
	R1190ACVZN-1017	TRP1A	5-85(MHz)	BPF: 108-1002(MHz) Add MoCA BPF: 1125-1525(MHz)	IEC61000-4-5 Level4	DOCSIS3.0, MoCA1.1

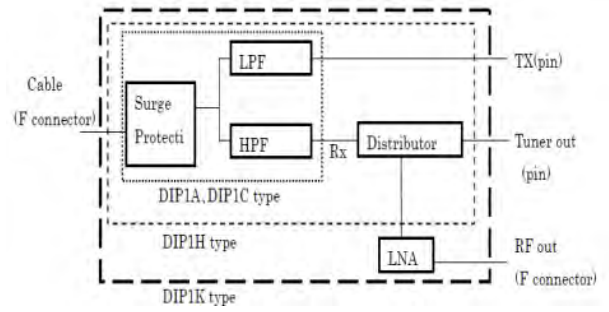
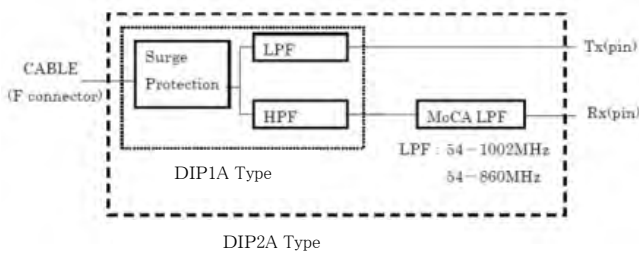
### 特 征

- 数字CATV机顶盒和线缆调制解调器用双工器和三工器。
- 带F接头的屏蔽体内集成Tx和Rx。
- 薄型构造: DIP1A, DIP1S,底部窄小区域可省装置面积: DIP1H和DIP1K。
- 将F型接头连接到电缆上, 并将TX和RX端子安装在PCB上以确保双工器的高性能。
- DIP1A带有UL60950-1第7部分规定的IEC61000-4-5四级标准的防雷击保护电路。
- DIP1H带有IEC61000-4-5四级标准的保护电路,内置有分配器。
- DIP1K是DIP1H增加LNA。
- 设计符合DOCSIS2.0,DOCSIS3.0, ANSI/SCTE。
- TRP1A/TRP1D用于MoCA产品。
- 符合RoHS指令。

### 应 用

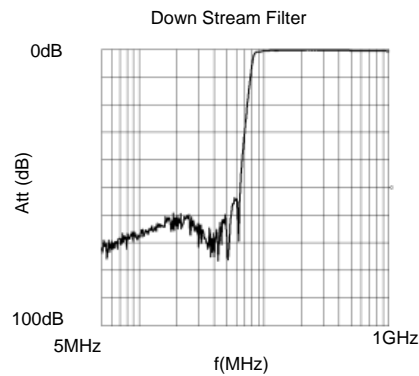
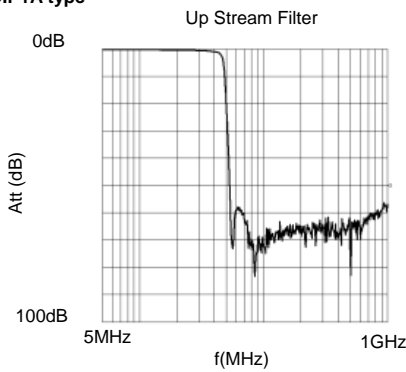
- 适用于为欧洲, 美国和亚洲所用的有线机顶盒和线缆调制解调器。
- 最适用于MoCA机顶盒。

### Schematic 概要

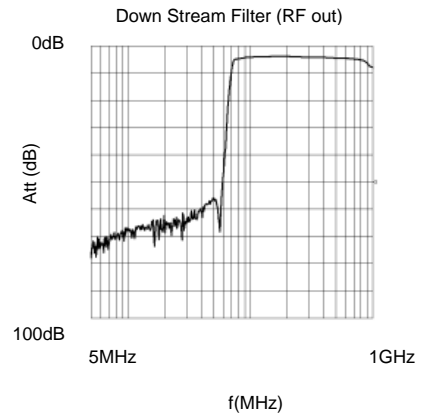
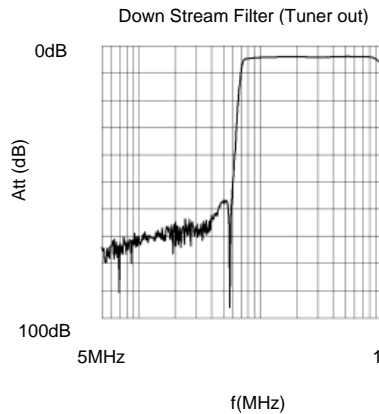
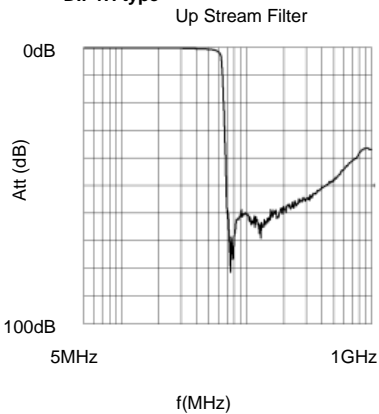


### Frequency Characteristics 频率特性

#### Typical Characteristic 典型特性 DIP1A type



#### DIP1H type



#### TRP1A & TRP1D type.

