

3KD 三维力传感器

特点和用途/Feature and Applications

- 不锈钢材料，体积小结构紧凑
- 可以同时检测三个方向的力

主要应用：铣床磨床加工过程中刀具三个方向受力分析检测，机器人抛光三轴力的检测。

- Stainless steel , small size
- Can measure force from three direction at same time.

Application : manily applied in force measurement of tools from three direction during process of milling machine, grinding machine. and three-axis force measurement of robot polishing..



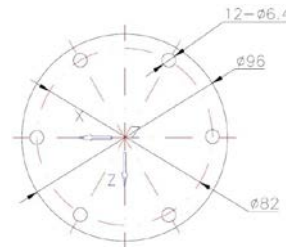
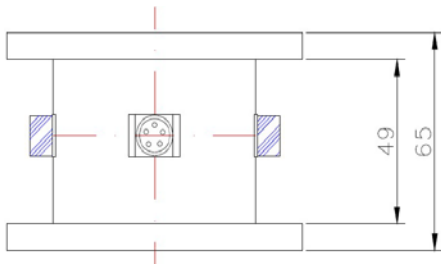
量程/Capacity :

X:20/30/50/100/150/200/300/500KG

Y:20/30/50/100/150/200/300/500KG

Z:30/50/100/200/300/500/1000KG

The mutual interference among three dimensions is smaller than 5%



规格参数 Specification

| | | | |
|-----------------------------|--|------------------------------|----------------|
| 输出灵敏度 Rated Output | 1.0 ± 10% mV / V | 输出电阻 Output Impedance | 350 ± 3 Ω |
| 零点输出 Zero Balance | ± 2 % F.S. | 绝缘电阻 Insulation | ≥5000MΩ/100VDC |
| 非线性 Non-linearity | 0.5 % F.S | 使用电压 Recodmmended Excitation | 5V |
| 滞后 Hyteresis | 0.5 % F.S | 最大使用电压 Maximum Excitation | 10V |
| 重复性 Repeatability | 0.5 % F.S | 温补范围 CompensatedTemp Range | - 10 ~ 60 °Ce |
| 蠕变 (30 分钟) Creep (30min) | 0.5 % F.S | 工作温度 Operation Temp Range | - 20 ~ 80 °C |
| 灵敏温漂 Temp Effect on Output | 0.5 % F.S. / 10°C | 安全超载 Safe Overload | 120% |
| 零点温漂 Temp Effect on Zero | 0.5 % F.S. / 10°C | 极限超载 Ultimate Overload | 150% |
| 输入电阻 Input Impedance | 385 ± 10 Ω | 电气连接 Connection | 5 pin |
| 电电缆线连接方式 Wire Connection | Ex + : Pin1 Ex - : Pin 2; Output + : Pin 3 Output - : Pin 5 输入+: 红 输入 - 黑 ; 输出 + : 绿 输出 - : 白 | | |