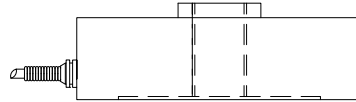
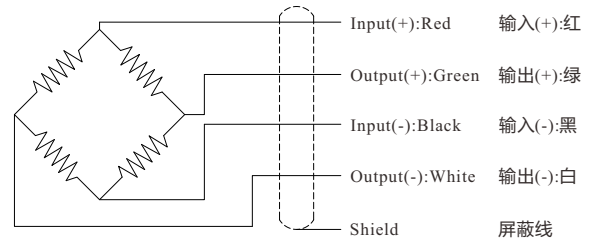


Load direction  
加载方向



Wiring Diagram/接线图



Capacity/量程(T)	H1	H2	C	D	A	F	M
0.5/1/1.5/2/ 3/5/7	34	37	89	6.5	105	32	M16*1.5
10/15/20	46	56	101.8	8.6	125	39	M30*1.5
25/30	54	65	116.8	10.5	145	60	M40*1.5

--- Specifications / 规格参数 ---

Capacity/量程	0.5/1/1.5/2/3/5/7/10/15/20/25/30T		
Rated Output 额定输出	2.0±10% $mV/V$	Compensated Temp. 温度补偿范围	-10...+60°C
Excitation 激励电压	5~15V	Operating Temp. 工作温度范围	-20...+80°C
Zero Balance 零点输出	±2% of R.O.	Temp. Shift Zero 零点温度漂移	±0.03% of R.O./10°C
Nonlinearity 非线性	±0.05% of R.O.	Temp. Shift Span 灵敏度温度漂移	±0.03% of R.O./10°C
Hysteresis 滞后	±0.05% of R.O.	Input Resistance 输入阻抗	750±10Ω
Nonrepeatability 非重复性	±0.03% of R.O.	Output Resistance 输出阻抗	700±5Ω
Creep(30min) 蠕变	±0.03% of R.O.	Insulation Resistance 绝缘阻抗	>5000MΩ(50V)
Safe Overload 安全过载	150% of F.S.	Ingress Protection 防护等级	IP66
Ultimate Overload 极限过载	200% of F.S.	Material of Element 弹性体材料	Alloy steel 合金钢
Cable 导线	Ø5*3000mm 4-core shielded cable Ø5*3000mm 4芯屏蔽线		
R.O.=Rated Output/额定输出 F.S.=Full Scale/满量程			

• Subject to change without notice / 如有更改,不另行通知