

| | | | | | | | |
|-------|-------|-------|-------|-------------|-----|-----|----|
| 14.76 | 14.16 | 11.90 | 13.56 | 505070-7010 | --- | Δ | 70 |
| 13.71 | 13.11 | 10.85 | 12.51 | 505070-6410 | --- | Δ | 64 |
| 13.01 | 12.41 | 10.15 | 11.81 | 505070-6010 | --- | Δ | 60 |
| 12.66 | 12.06 | 9.80 | 11.46 | 505070-5810 | --- | --- | 58 |
| 11.96 | 11.36 | 9.10 | 10.76 | 505070-5410 | --- | ○ | 54 |
| 11.26 | 10.66 | 8.40 | 10.06 | 505070-5010 | --- | Δ | 50 |
| 10.91 | 10.31 | 8.05 | 9.71 | 505070-4810 | ○ | --- | 48 |
| 10.56 | 9.96 | 7.70 | 9.36 | 505070-4610 | --- | ○ | 46 |
| 9.86 | 9.26 | 7.00 | 8.66 | 505070-4210 | --- | Δ | 42 |
| 9.51 | 8.91 | 6.65 | 8.31 | 505070-4010 | ○ | --- | 40 |
| 9.16 | 8.56 | 6.30 | 7.96 | 505070-3810 | --- | --- | 38 |
| 8.46 | 7.86 | 5.60 | 7.26 | 505070-3410 | --- | ○ | 34 |
| 7.76 | 7.16 | 4.90 | 6.56 | 505070-3010 | ○ | --- | 30 |
| 6.71 | 6.11 | 3.85 | 5.51 | 505070-2410 | --- | Δ | 24 |
| 6.36 | 5.76 | 3.50 | 5.16 | 505070-2210 | --- | ○ | 22 |
| 6.01 | 5.41 | 3.15 | 4.81 | 505070-2010 | --- | Δ | 20 |
| 5.66 | 5.06 | 2.80 | 4.46 | 505070-1810 | --- | Δ | 18 |
| 5.31 | 4.71 | 2.45 | 4.11 | 505070-1610 | ○ | --- | 16 |
| 4.96 | 4.36 | 2.10 | 3.76 | 505070-1410 | --- | --- | 14 |
| 4.61 | 4.01 | 1.75 | 3.41 | 505070-1210 | ○ | --- | 12 |
| 4.26 | 3.66 | 1.40 | 3.06 | 505070-1010 | --- | Δ | 10 |
| 3.56 | 2.96 | 0.70 | 2.36 | 505070-0610 | ○ | --- | 6 |

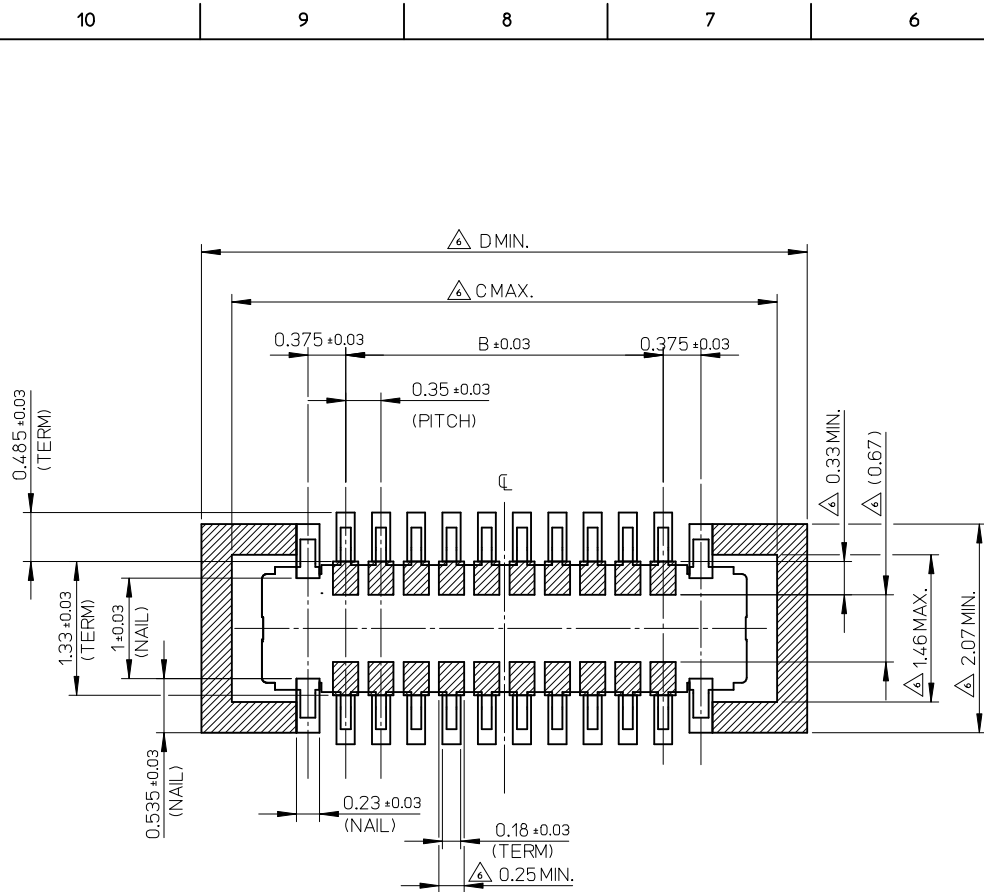
NOTES

- MATERIAL
 WAFER : LIQUID CRYSTAL POLYMER UL94V-0(COLOR : BLACK)
 TERMINAL : COPPER ALLOY
 FITTING NAIL : COPPER ALLOY
- PLATING
 TERMINAL :
 GOLD / UNDER PLATING : NICKEL
 *DIVIDE INTO PARTS THE GOLD PLATING OF THE CONTACT AND THE TAIL PART BY THE NICKEL PLATING.
 FITTING NAIL :
 GOLD / UNDER PLATING : NICKEL
 *DIVIDE INTO PARTS THE GOLD PLATING OF THE CONTACT AND THE TAIL PART BY THE NICKEL PLATING.
 *EVEN THOUGH GOLD PLATING ON THE TOP SURFACE OF NAIL MIGHT BE THIN, NO FUNCTIONAL PROBLEM.
- APPLY FOR (CIRCUIT/2)=EVEN.
- MATE WITH : 505066-***10
- TAIL AND FITTING NAIL COPLANARITY TO BE 0.08MAXIMUM.
- PROHIBITED AREA OF PATTERN WIRING AND SOLDER.
 (FOR EACH AREA, THE WIRING THAT TOUCHES ON THE SOLDER CAN BE ATTACHED, THEN COVERED WITH A FILM TO KEEP SOLDER OUT.)
- ELV and RoHS COMPLIANT.

| | | | | | | | |
|---|---|---|---|------------------------|--|---------------|---------|
| D | C | B | A | EMBOSSSED TAPE PACKAGE | HIGH VOL. TOOL | LOW VOL. TOOL | CIRCUIT |
| | | | | ORDER NO. | SAMPLE PREPARATION ○ : TOOLED Δ : WORK IN PROCESS --- : TOOLING TO BE CONFIRMED | | |

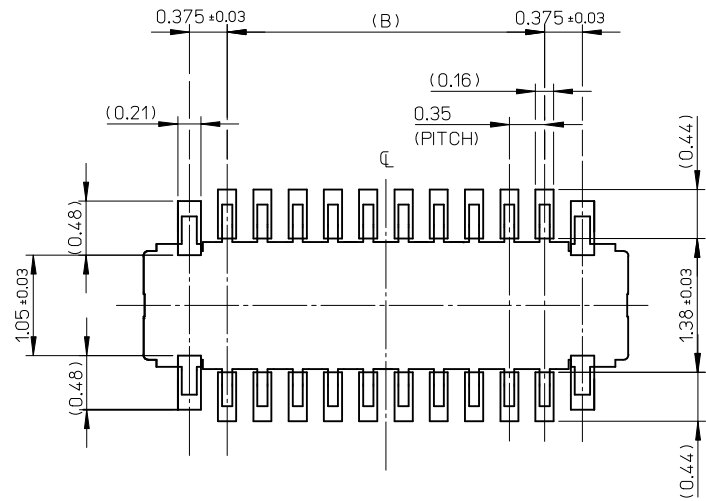
CONNECTOR SERIES No. : 505070-***09

| | | | | | | |
|--|---------------------------------------|--------------|---|------------|--------------|--|
| REVISED EC NO: J2015-0567 DRWN: TSOMEYA 2014/10/14 CHKD: KMORIKAWA 2014/10/27 APPR: KMORIKAWA 2014/10/27 | GENERAL TOLERANCES (UNLESS SPECIFIED) | | DIMENSION STYLE | SCALE | DESIGN UNITS | TITLE 0.35 BB CONN. H=0.6 SSB6 RP PLUG ASSY molex DOCUMENT NO. SD-505070-001 SHEET NO. 1 OF 2 |
| | (UNLESS SPECIFIED) | | MM ONLY | 20:1 | METRIC | |
| | 10 UNDER | ±0.2 | DRAWN BY | DATE | TITLE | |
| | 10 OVER 30 UNDER | ±0.25 | KSASAKI | 2014/04/15 | | |
| 30 OVER | ±0.3 | CHECKED BY | DATE | | | |
| | | KTANAKA03 | 2014/04/15 | | | |
| | | APPROVED BY | DATE | | | |
| | | KMORIKAWA | 2014/05/02 | | | |
| | | MATERIAL NO. | SEE CHART | | | |
| | | | DRAFT WHERE APPLICABLE MUST REMAIN WITHIN DIMENSIONS | | | |
| | | | THIS DRAWING CONTAINS INFORMATION THAT IS PROPRIETARY TO MOLEX INCORPORATED AND SHOULD NOT BE USED WITHOUT WRITTEN PERMISSION | | | |



RECOMMENDED P.W.BOARD PATTERN LAYOUT (REFERENCE)

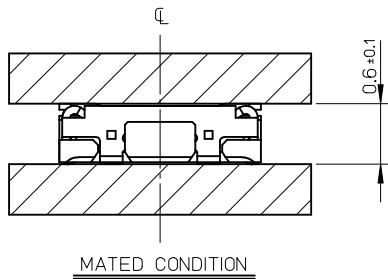
△ PROHIBITED AREA OF PATTERN WIRING AND SOLDER.
(FOR EACH AREA, THE WIRING THAT TOUCHES ON THE SOLDER
CAN BE ATTACHED, THEN COVERED WITH A FILM TO KEEP SOLDER OUT.)



RECOMMENDED METAL MASK LAYOUT (REFERENCE)

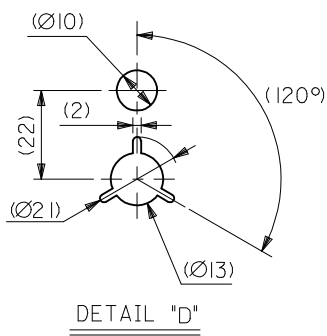
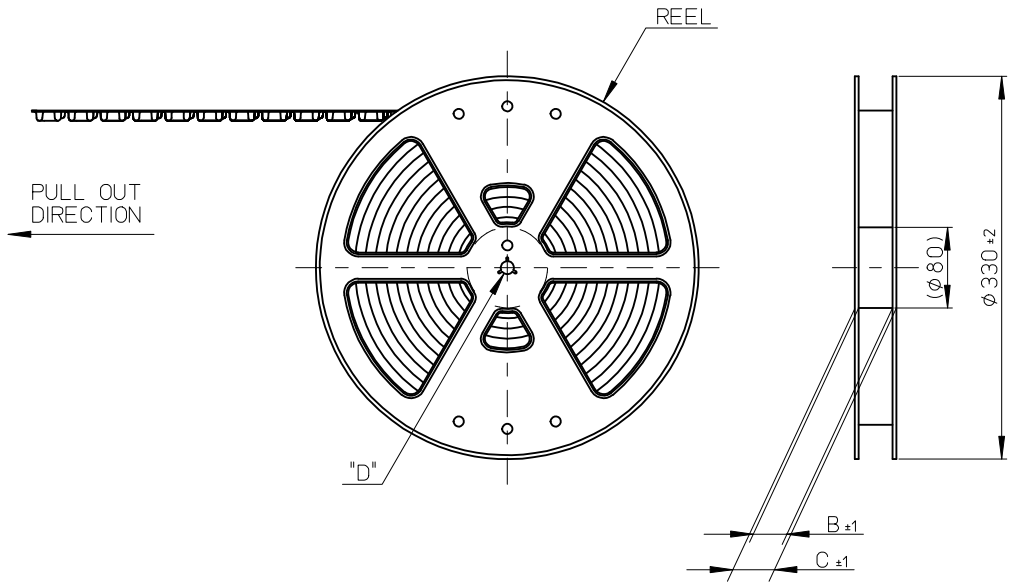
RECOMMENDED THICKNESS OF METAL MASK : t=0.08mm

RECOMMENDED OPEN APERTURE RATIO OF METAL MASK : 80%



MATED CONDITION

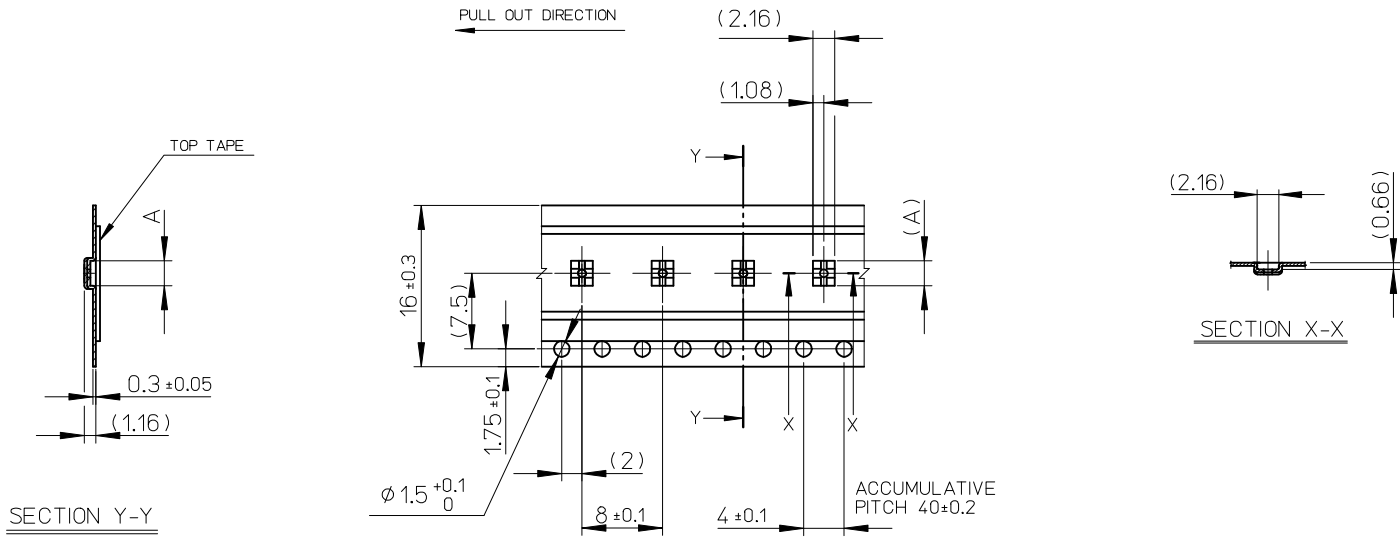
| | | | | | | | | | |
|--|--|-----------------------------------|-----------------------------------|--------------------------------------|---|-------------------------------|---------------------------|--|--|
| SEE SHEET 1 OF 2 EC NO: J2015-0567 DRWN: TSOMEYA 2014/10/14 CHKD: APPR: KMORIKAWA 2014/10/27 | GENERAL TOLERANCES (UNLESS SPECIFIED) | | DIMENSION STYLE MM ONLY | | SCALE 20:1 | DESIGN UNITS METRIC | THIRD ANGLE PROJECTION | | |
| | 10 UNDER | ± 0.2 | DRAWN BY KSASAKI | DATE 2014/04/15 | TITLE 0.35 BB CONN. H=0.6 SSB6 RP PLUG ASSY | | | | |
| | 10 OVER 30 UNDER | ± 0.25 | CHECKED BY KTANAKA03 | DATE 2014/04/15 | | | | | |
| | 30 OVER | ± 0.3 | APPROVED BY KMORIKAWA | DATE 2014/05/02 | | | | | |
| ANGULAR ± 1 ° DRAFT WHERE APPLICABLE MUST REMAIN WITHIN DIMENSIONS | | MATERIAL NO. SEE SHEET1 | | DOCUMENT NO. SD-505070-001 | | SHEET NO. 2 OF 2 | | | |
| THIS DRAWING CONTAINS INFORMATION THAT IS PROPRIETARY TO MOLEX INCORPORATED AND SHOULD NOT BE USED WITHOUT WRITTEN PERMISSION | | | | | | | | | |



NOTES

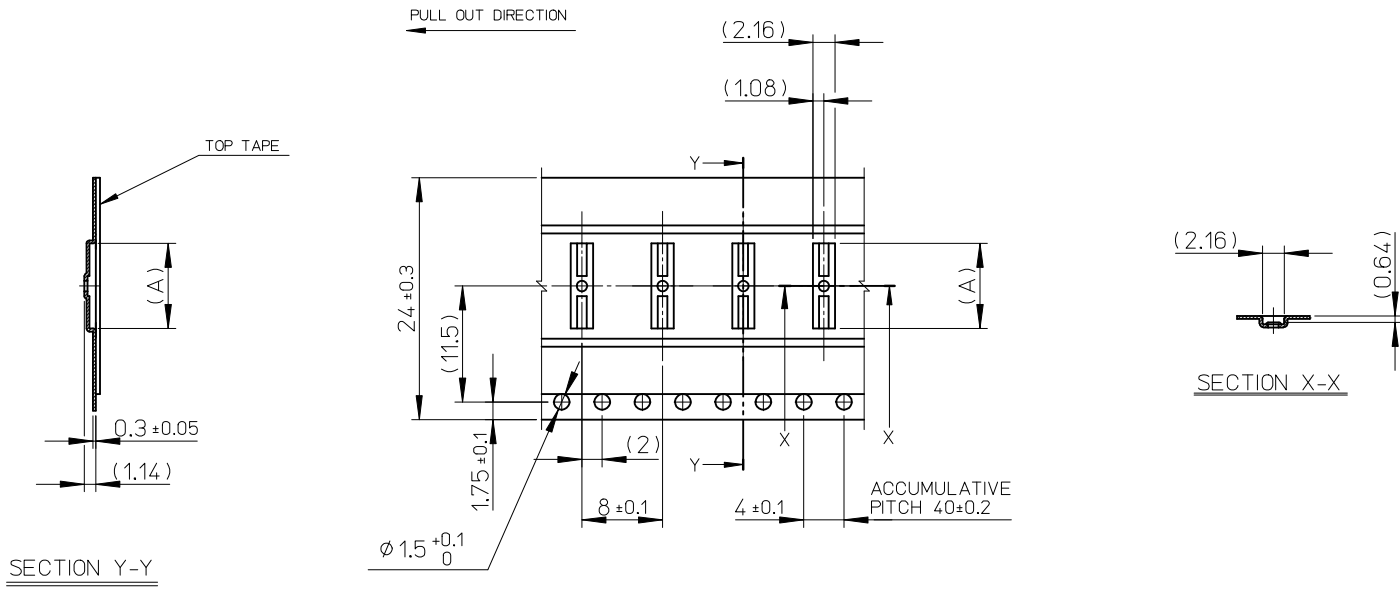
- RE DETAILED DIMENSION, SEE PRODUCT DRAWING.
- NUMBER OF CONNECTORS : 3000PCS/REEL
- LEAD TAPE LENGTH
- TOP TAPE PEEL FORCE IS DEFINED BY IEC60286-3.
- MATERIAL
 CARRIER TAPE : POLYSTYRENE
 TOP TAPE : PET , OTHER
 REEL : POLYSTYRENE (PS) <RECYCLE MATERIAL CONTAINED>
- ELV AND RoHS COMPLIANT

| | | | | | | | | |
|--|---------------------------------------|--------------|----------------------------|---|--------------|--|------------------------|------------------------|
| REVISED EC NO: J2015-0567 DRWN: XFEU01 2014/10/27 CHKD: APPR: KMORIKAWA 2014/10/27 | GENERAL TOLERANCES (UNLESS SPECIFIED) | | DIMENSION STYLE MM ONLY | | SCALE 1:5 | MODEL NO. 505066-**10 | DESIGN UNITS METRIC | THIRD ANGLE PROJECTION |
| | 10 UNDER | ± 0.2 | DRAWN BY KSASAKI | DATE 2014/03/10 | TITLE | 0.35 BB CONN. H=0.6 SSB6 RP PLUG ASSY EMBSTP PKG | | |
| | 10 OVER 30 UNDER | ± 0.25 | CHECKED BY KTANAKA03 | DATE 2014/03/10 | | | | |
| | 30 OVER | ± 0.3 | APPROVED BY KMORIKAWA | DATE 2014/08/01 | | | | |
| ANGULAR ± 1 ° | | MATERIAL NO. | | DOCUMENT NO. | SHEET NO. | | | |
| DRAFT WHERE APPLICABLE MUST REMAIN WITHIN DIMENSIONS | | SEE CHART | | SD-505070-002 | | 1 OF 3 | | |
| | | SIZE A3 | | THIS DRAWING CONTAINS INFORMATION THAT IS PROPRIETARY TO MOLEX INCORPORATED AND SHOULD NOT BE USED WITHOUT WRITTEN PERMISSION | | | | |



| | | | | | | | | | |
|--------------------------------|-------------|------|------|-------------|-----|--------------|----------------|---------------|---------|
| 16 | 21.4 | 17.4 | 7.82 | 505070-3010 | o | --- | 30 | | |
| | | | 6.77 | 505070-2410 | --- | Δ | 24 | | |
| | | | 6.42 | 505070-2210 | --- | o | 22 | | |
| | | | 6.07 | 505070-2010 | --- | Δ | 20 | | |
| | | | 4.93 | 505070-1810 | --- | Δ | 18 | | |
| | | | 4.58 | 505070-1610 | o | --- | 16 | | |
| | | | 4.23 | 505070-1410 | --- | Δ | 14 | | |
| | | | 3.53 | 505070-1210 | o | --- | 12 | | |
| | | | 3.18 | 505070-1010 | --- | Δ | 10 | | |
| 2.48 | 505070-0610 | o | --- | 6 | | | | | |
| キャリアテープ幅 CARRIER TAPE WIDTH | | | C | B | (A) | MATERIAL No. | HIGH VOL. TOOL | LOW VOL. TOOL | CIRCUIT |
| SAMPLE PREPARATION | | | | | | | | | |

| | | | | | | | | | |
|--|---------------------------------------|-----------|----------------------------|---|---|------------------------|------------------------|--|--|
| SEE SHEET 1 EC NO: J2015-0567 DRWN: XMFU01 2014/10/27 CHKD: APPR: KMORIKAWA 2014/10/27 | GENERAL TOLERANCES (UNLESS SPECIFIED) | | DIMENSION STYLE MM ONLY | | SCALE 2:1 | DESIGN UNITS METRIC | THIRD ANGLE PROJECTION | | |
| | 10 UNDER | ± 0.2 | DRAWN BY KSASAKI | DATE 2014/03/10 | TITLE 0.35 BB CONN. H=0.6 SSB6 RP PLUG ASSY EMBSTP PKG | | | | |
| | 10 OVER 30 UNDER | ± 0.25 | CHECKED BY KTANAKA03 | DATE 2014/03/10 | | | | | |
| | 30 OVER | ± 0.3 | APPROVED BY KMORIKAWA | DATE 2014/08/01 | | | | | |
| | ANGULAR | ± 1 ° | MATERIAL NO. | | DOCUMENT NO. SD-505070-002 | SHEET NO. 2 OF 3 | | | |
| DRAFT WHERE APPLICABLE MUST REMAIN WITHIN DIMENSIONS | | SEE CHART | | THIS DRAWING CONTAINS INFORMATION THAT IS PROPRIETARY TO MOLEX INCORPORATED AND SHOULD NOT BE USED WITHOUT WRITTEN PERMISSION | | | | | |



| | | | | | | | | |
|--------------------------------|-------------|------|-------|-------------|--------------|----------------|---------------|---------|
| 24 | 29.4 | 25.4 | 12.63 | 505070-6410 | --- | △ | 64 | |
| | | | 11.93 | 505070-6010 | --- | △ | 60 | |
| | | | 10.88 | 505070-5410 | --- | ○ | 54 | |
| | | | 10.18 | 505070-5010 | --- | △ | 50 | |
| | | | 9.83 | 505070-4810 | ○ | --- | 48 | |
| | | | 9.48 | 505070-4610 | --- | ○ | 46 | |
| | | | 8.78 | 505070-4210 | --- | △ | 42 | |
| | | | 8.43 | 505070-4010 | ○ | --- | 40 | |
| 7.34 | 505070-3410 | --- | ○ | 34 | | | | |
| キャリアテープ幅 CARRIER TAPE WIDTH | | C | B | (A) | MATERIAL No. | HIGH VOL. TOOL | LOW VOL. TOOL | CIRCUIT |
| SAMPLE PREPARATION | | | | | | | | |

| | | | | | | | | |
|--|---------------------------------------|--------------|----------------------------|---|--|------------------------|------------------------|---------------------|
| SEE SHEET 1 EC NO: J2015-0567 DRWN: XMFU01 2014/10/27 CHKD: APPR: KMORIKAWA 2014/10/27 | GENERAL TOLERANCES (UNLESS SPECIFIED) | | DIMENSION STYLE MM ONLY | | SCALE 2:1 | DESIGN UNITS METRIC | THIRD ANGLE PROJECTION | |
| | 10 UNDER | ±0.2 | DRAWN BY | DATE | TITLE | | | |
| | 10 OVER 30 UNDER | ±0.25 | KSASAKI | 2014/03/10 | 0.35 BB CONN. H=0.6 SSB6 RP PLUG ASSY EMBSTP PKG molex | | | |
| | 30 OVER | ±0.3 | CHECKED BY | DATE | | | | |
| | ANGULAR | ±1° | KTANAKA03 | 2014/03/10 | APPROVED BY | DATE | DOCUMENT NO. | |
| DRAFT WHERE APPLICABLE MUST REMAIN WITHIN DIMENSIONS | | KMORIKAWA | 2014/08/01 | SEE CHART | | SD-505070-002 | | SHEET NO. 3 OF 3 |
| | | MATERIAL NO. | | THIS DRAWING CONTAINS INFORMATION THAT IS PROPRIETARY TO MOLEX INCORPORATED AND SHOULD NOT BE USED WITHOUT WRITTEN PERMISSION | | | | |