



AIM OF THE EXCITERS

The aim of the exciters is to transform the current produced by an amplifier into a proportional force which, applied on appropriated points of a structure, sends a vibratory movement to this structure.

MAIN FEATURES

The EX 520 C50 exciter is a big exciter including a magnetic circuit made of magnets enabling the development of important forces. The moving assembly made out of a magnesium head and an aluminium coil is mounted on a guidance rod. The rod is guided by two near zero friction bearings to insure a high amplitude longitudinal movement with no transverse movement.

This exciter includes a fan to insure the cooling of the moving coil and the fan is directly powered by the power amplifier through the main exciter cable.

A multicolour luminous scale allows at any time the visualization of the position of the moving coil in the magnetic circuit and the indication of the amplitude movement during the tests. This visualisation is repeated on the front panel of the associated amplifier.

APPLICATIONS

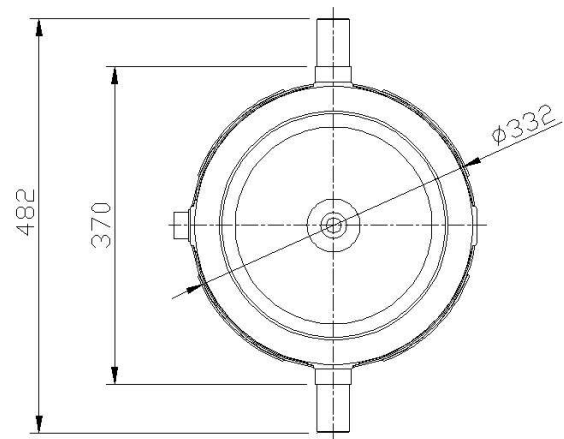
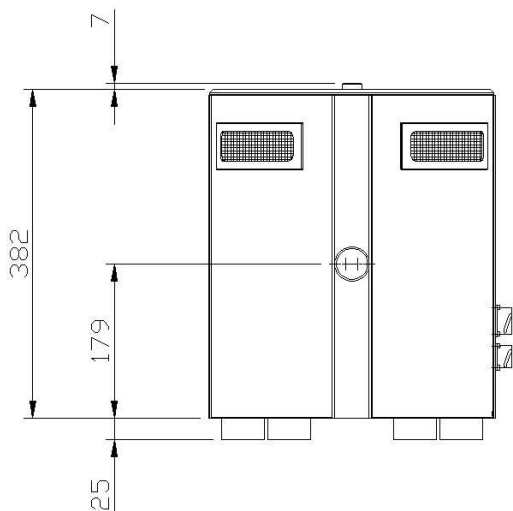
Driven by the amplifier type A 649 HV (1,600 VA), the exciter type EX 520 C50 supplies a minimum force of 550 N. The EX 520 C50, due to its force, can be used for different tests on heavy structures.

TECHNICAL FEATURES

Nominal force	550 N (126.72 lbf) ± 2%
Force factor	27.5 N/A
Maximum peak current	20 A
Maximum displacement	± 25.4 mm (± 1 inch)
Coil resistance at 20°C	1.82 Ohm
Armature weight with an aluminium coil	680 grams (1.49 lbs)
Magnetic circuit	Magnets
Cooling	By incorporated ventilation
Electrical connection	With socket
Total weight	66 kg (146.7 lbs)
Dimensions	See sketch
Electrical optical limits	± 25 mm
Mechanical limit stops	± 26 mm

OPTIONAL ACCESSORIES:

- Power cables references CL 520-5 (5 meters), CL 520-10 (10 meters), CL 520-20 (20 meters), CL 520-30 (30 meters), CL 520-40 (40 meters)
- Position cables references CL 520-10-S (10 meters), CL 520-20-S (20 meters), CL 520-30-S (30 meters) CL 520-40-S
- Mechanical adjustable link reference LMA 300;
- Linear elastic cord suspension system reference S 520L; linear elastic cord suspension system for shaker with trunnion reference S 520BL;
- Trunnion reference BF 220; Seismic support reference SS 520



Dimensions in mm

www.haopute.com
 email:info@haopute.com
 phone:02884625157
 mobile:18982185717



PRODERA