



AIM OF THE EXCITERS

The aim of the exciters is to transform the current produced by an amplifier into a proportional force which, applied on appropriated points of a structure, sends a vibratory movement to this structure.

MAIN FEATURES

The EX 320 C50 exciter is a compact version of the EX 520 C50 shaker, developing up to 350 N, but maintaining the same long stroke.

The moving assembly made out of a magnesium head and an aluminium coil is mounted on a guidance rod. The rod is guided by two near zero friction bearings to insure a high amplitude longitudinal movement with no transverse movement.

This exciter includes a fan to insure the cooling of the moving coil and the fan is directly powered by the power amplifier through the main exciter cable.

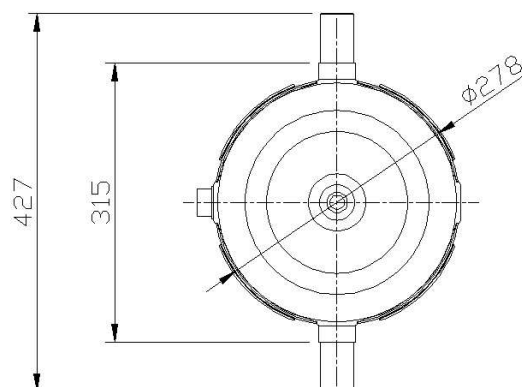
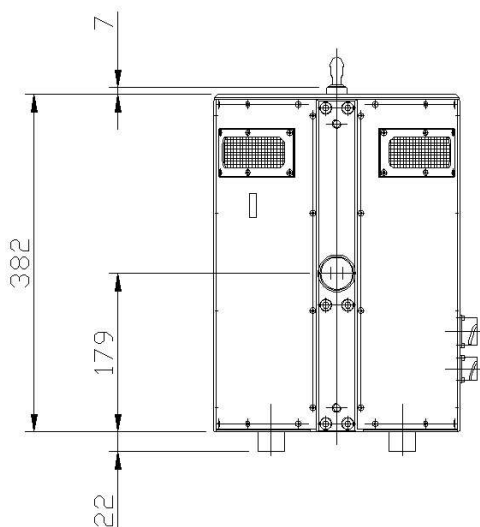
A multicolour luminous scale allows at any time the visualisation of the position of the moving coil in the magnetic circuit and the indication of the amplitude movement during the tests. This visualisation is repeated on the front panel of the associated amplifier.

APPLICATIONS

Driven by the amplifier type A 649 HV (800 VA), the exciter type EX 320 C50 supplies a maximum force of 350 N. It can also supply 50% of the nominal force up to 300 Hz.

TECHNICAL FEATURES

Nominal force	350 N \pm 10%
Force factor	17,5 N/A \pm 10%
Maximum peak current	20 A
Maximum displacement	\pm 25 mm (\pm 1 inch)
Coil resistance at 20°C	1.19 Ohm
Armature weight	625 g
Magnetic circuit	Permanent magnets
Cooling	By incorporated ventilation
Electrical connection	With socket
Total weight	49,5 kg
Dimensions	See sketch
Electrical optical limits	\pm 25 mm
Mechanical limit stops	\pm 26 mm
Axis guidance	Low friction linear bearings
Power point	By grip



Dimensions in mm

www.haopute.com
 email:info@haopute.com
 phone:02884625157
 mobile:18982185717



PRODERA