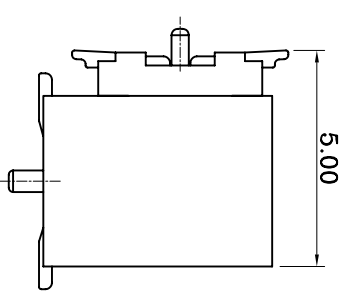
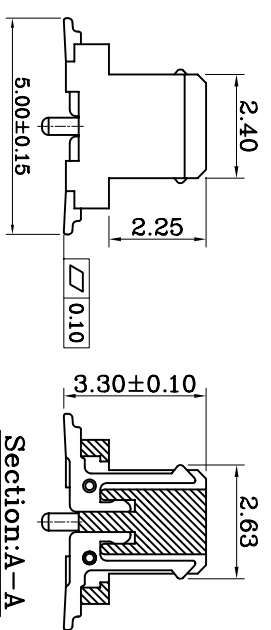
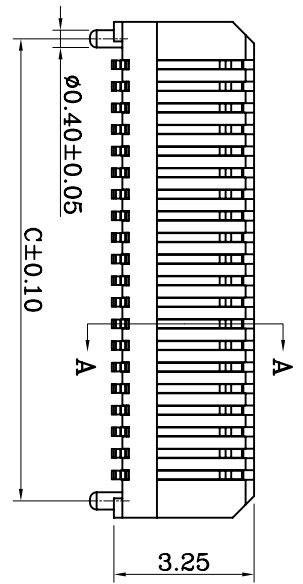
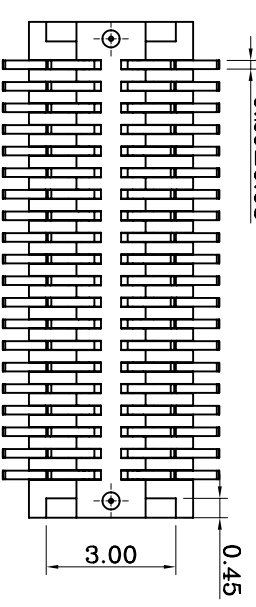


Recommended PCB Layout



Mating Height: 5.0mm



Pin	Dim A	Dim B	Dim C
2x5	2.00	3.98	3.20
2x6	2.50	4.48	3.70
2x7	3.00	4.98	4.20
2x8	3.50	5.48	4.70
2x9	4.00	5.98	5.20
2x10	4.50	6.48	5.70
2x11	5.00	6.98	6.20
2x12	5.50	7.48	6.70
2x13	6.00	7.98	7.20
2x14	6.50	8.48	7.70
2x15	7.00	8.98	8.20
2x16	7.50	9.48	8.70
2x17	8.00	9.98	9.20
2x18	8.50	10.48	9.70
2x19	9.00	10.98	10.20
2x20	9.50	11.48	10.70

1. Specification:
- 1.1 Current rating: 0.3A AC/DC
 - 1.2 Voltage rating: 50V AC/DC
 - 1.3 Contact resistance: 60m milliohms max
 - 1.4 Insulation resistance: 100 Mega ohms min
 - 1.5 Withstanding voltage: 500V AC/minute
 - 1.6 Temperature range: -25°C to +80°C
2. Material and Plating
- 2.1 Insulator: PA9T. Plastic (UL94V-0)
 - 2.2 Contact: Phosphor Bronze
 - 2.3 Finish: Gold Plated

DRAWING: 杨朝
 CHECKED: 杨朝
 UNIT: MM
 SCALE: 1/1
 PROJECTION:

GENERAL TOLERANCE
 .X: ±0.2
 .XX: ±0.08
 .XXX: ±0.03
 .X°: ±2°
 .XX°: ±1°
 .XXX°: ±0.5°

DESCRIPTION:
 0.5mm Board to Board Plug

PART NO: 101MXXU-A1Q2-A2SV1B
 DRAWING NO: P1101MXXU-A2SV1B-01
 REV: 1.0
 SIZE: A4

深圳市山谷道电子有限公司
 电话: 0755-27759859 传真: 0755-27759850

NO. 1	DATE	DESCRIPTION	APPROVAL

