

◆ SPECIFICATIONS

- Current rating: 1.5A AC, DC
- Voltage rating: 50V AC, DC
- Temperature range: -25°C ~ +85°C
- Insulation resistance: 100MΩ Min.
- Withstanding voltage: 500V AC/ minute.
- Contact resistance: 20mΩ Max.

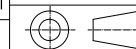
Material: Nylon 46 UL94V-0 Black
 Suitable: 1200 series Crimp Terminal

PIN.	Dimension	
	A	B
2P	1.20	2.60
3P	2.40	3.80
4P	3.60	5.00
5P	4.80	6.20
6P	6.00	7.40
7P	7.20	8.60
8P	8.40	9.80

△4				GENERAL TOLERANCE	UNIT: mm	DATE	TITLE: MX 1.20mm Crimp Style Housing		
△3				.X±0.30	X° ±1°	DRAWN: 闵昕皓	2015.3.3		
△2				.XX±0.20	.X° ±	CHECKED:			
△1				.XXX±0.10	.XX° ±	APPROVED:			
LTR	NAME	DATE	VERSION RECORD				VER.	SCALE:	12.5:1
							A	SHEET:	1/1



PROJECT	PART NO.	A12000***29P40
DRAWING NO.		1200H01-2-S



1 2 3 4 5 6 7 8 9

A

A

B

B

C

C

D

D

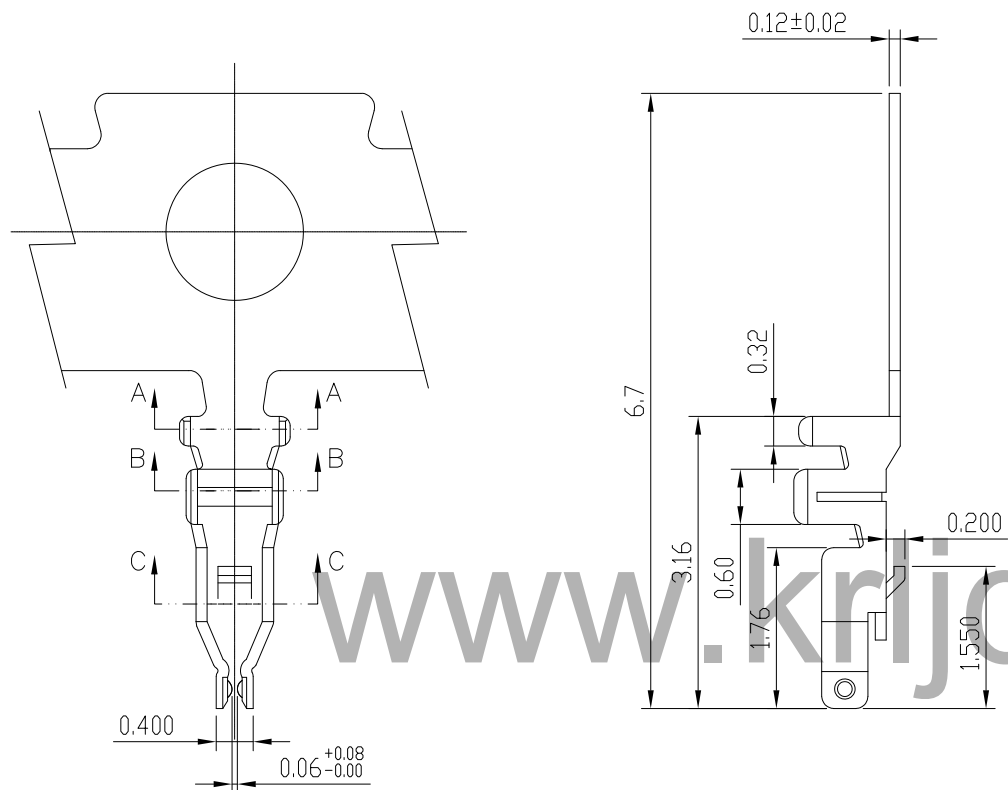
E

E

F

F

1 2 3 4 5 6 7 8 9



◆ SPECIFICATIONS

- Current rating: 1.5A AC, DC
- Voltage rating: 50V AC, DC
- Temperature range: -25°C ~ +85°C
- Insulation resistance: 100MΩ Min.
- Withstanding voltage: 500V AC/ minute.
- Contact resistance: 20m Ω Max.

Applicable Wires:

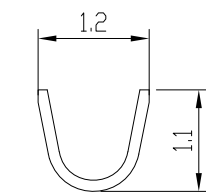
AWG#30~#36

Insulation O.D. : 0.75mm MAX

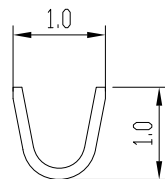
Material: Phosphor Bronze

Finish: Gold-flash over Nickel

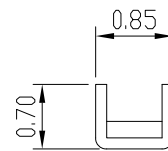
Suitable: 1200 series Crimp Housing



SECTION A-A



SECTION B-B



SECTION C-C

www.krijq.com

4				GENERAL TOLERANCE	UNIT: mm	DATE	TITLE:		
3				.X±0.30	X° ±1°	DRAWN: 闵昕皓	MX 1.20mm Crimp Style		
2				.XX±0.20	.X° ±	CHECKED:	Terminal		
1				.XXX±0.10	.XX° ±	APPROVED:	VER. A	SCALE: 12.5:1	1/1
LTR	NAME	DATE	VERISION RECORD						



东莞市康瑞电子有限公司
DongGuan A Rui Electronics Co. LTD.

PROJECT	PART NO.	B1201OG2AA100
DRAWING NO.		1200T01-2-S

1 2 3 4 5 6 7 8 9

A

B

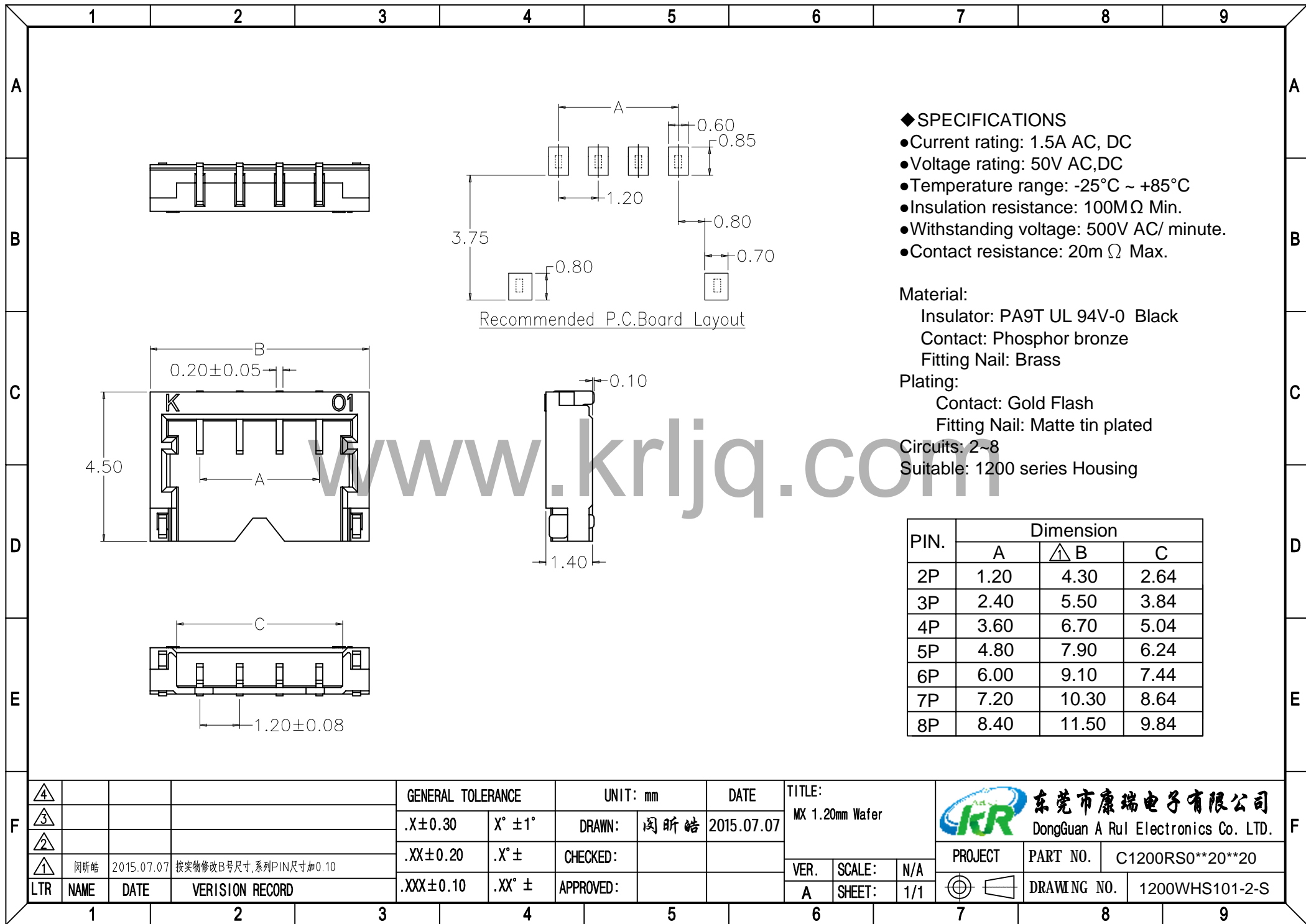
C

D

E

F

1 2 3 4 5 6 7 8 9



◆ SPECIFICATIONS

- Current rating: 1.5A AC, DC
- Voltage rating: 50V AC, DC
- Temperature range: -25°C ~ +85°C
- Insulation resistance: 100MΩ Min.
- Withstanding voltage: 500V AC/ minute.
- Contact resistance: 20mΩ Max.

Material:

Insulator: PA9T UL 94V-0 Black

Contact: Phosphor bronze

Fitting Nail: Brass

Plating:

Contact: Gold Flash

Fitting Nail: Matte tin plated

Circuits: 2-8

Suitable: 1200 series Housing

PIN.	Dimension		
	A	B	C
2P	1.20	4.30	2.64
3P	2.40	5.50	3.84
4P	3.60	6.70	5.04
5P	4.80	7.90	6.24
6P	6.00	9.10	7.44
7P	7.20	10.30	8.64
8P	8.40	11.50	9.84

④				GENERAL TOLERANCE	UNIT: mm	DATE	TITLE:	东莞市康瑞电子有限公司 DongGuan A Rul Electronics Co. LTD.	
③				.X±0.30	X° ±1°	DRAWN: 阙昕皓	2015.07.07		PROJECT PART NO. C1200RS0**20**20
②				.XX±0.20	.X° ±	CHECKED:			
①	阙昕皓	2015.07.07	按实物修改B号尺寸,系列PIN尺寸加0.10	.XXX±0.10	.XX° ±	APPROVED:			DRAWING NO. 1200WHS101-2-S
LTR	NAME	DATE	VERISION RECORD						