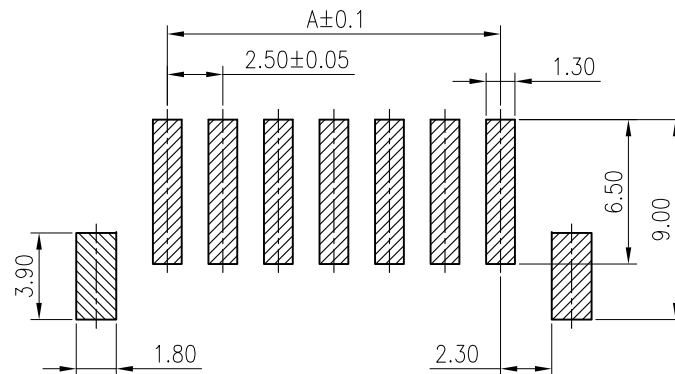
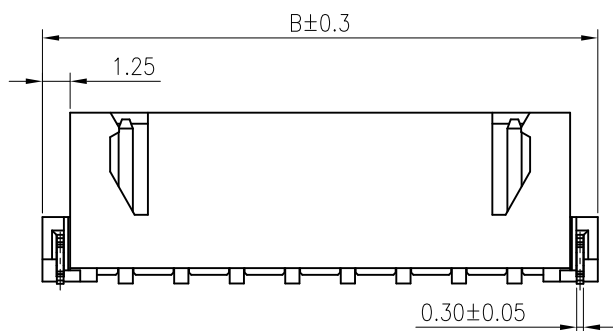
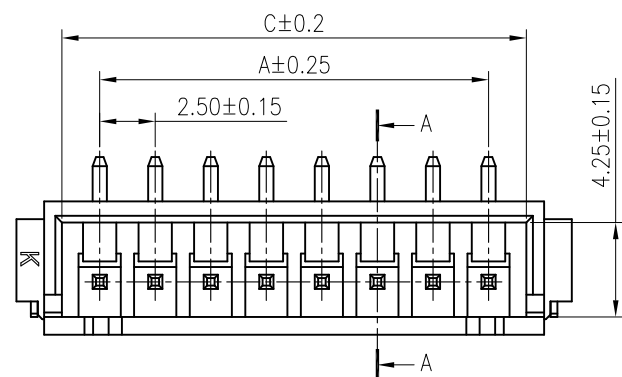
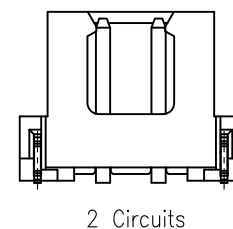
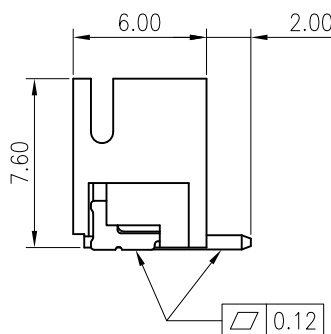
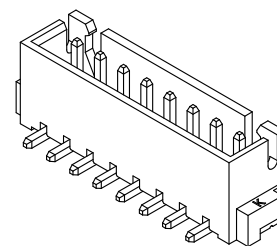
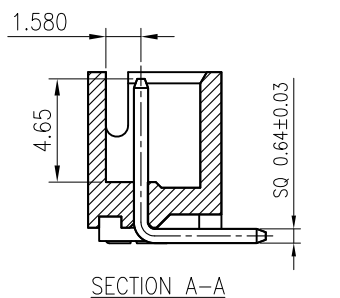


WITH COVER



Recommended P.C.Board Layout



- ◆ SPECIFICATIONS
- Current rating: 3A AC, DC
 - Voltage rating: 250V AC, DC
 - Temperature range: -25°C ~ +85°C
 - Insulation resistance: 1000MΩ Min.
 - Withstanding voltage: 1000V AC/ minute.
 - Contact resistance: 20mΩ Max.

Material:
 Insulator: Nylon 9T/LCP UL 94V-0
 Contact: Brass
 Solder Nail: Brass
 Plating: Tin plated over Nickel
 Circuits: 2~16
 Mates: KR2501 series Housing

Ordering code:

C2501VS***64P930
 ① ②

① Circuits: 002=2P 016=16P

② Material:
 P9=PA9T
 LP=LCP(Halogen free)

CKT.	Dimension		
	A	B	C
02	2.50	10.00	5.90
03	5.00	12.50	8.40
04	7.50	15.00	10.90
05	10.00	17.50	13.40
06	12.50	20.00	15.90
07	15.00	22.50	18.40
08	17.50	25.00	20.90
09	20.00	27.50	23.40
10	22.50	30.00	25.90
11	25.00	32.50	28.40
12	27.50	35.00	30.90
13	30.00	37.50	33.40
14	32.50	40.00	35.90
15	35.00	42.50	38.40
16	37.50	45.00	40.90

△4				GENERAL TOLERANCE	UNIT: mm	DATE	TITLE:		
△3				.X±0.3	X°±1°	DRAWN: 朱佑武	JST XH2.5 SMT 180°		
△2				.XX±0.2	.X°±	CHECKED:	WAFER		
△1				.XXX±0.1	.XX°±	APPROVED:	VER.	SCALE:	N/A
LTR	NAME	DATE	VERSION RECORD				A	SHEET:	1/1


东莞市康瑞电子有限公司
 DongGuan A Rui Electronic Co., LTD.

PROJECTION	PART NO.	C2501VS***64P930
	DRAWING NO.	2501WVS101-6-S