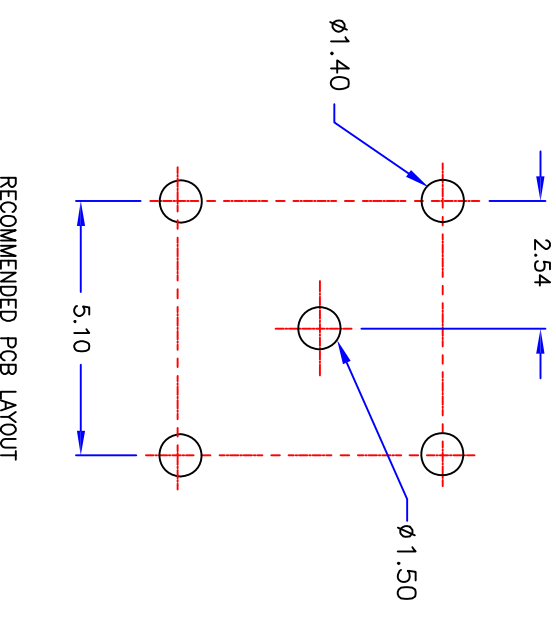
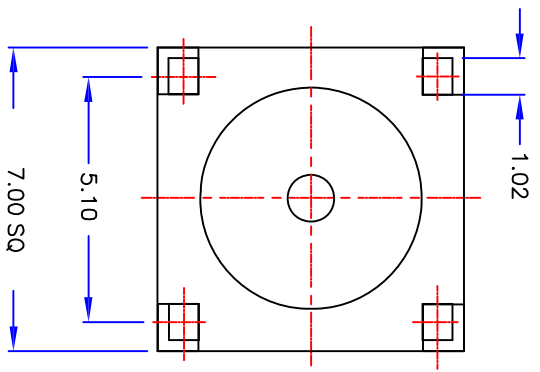
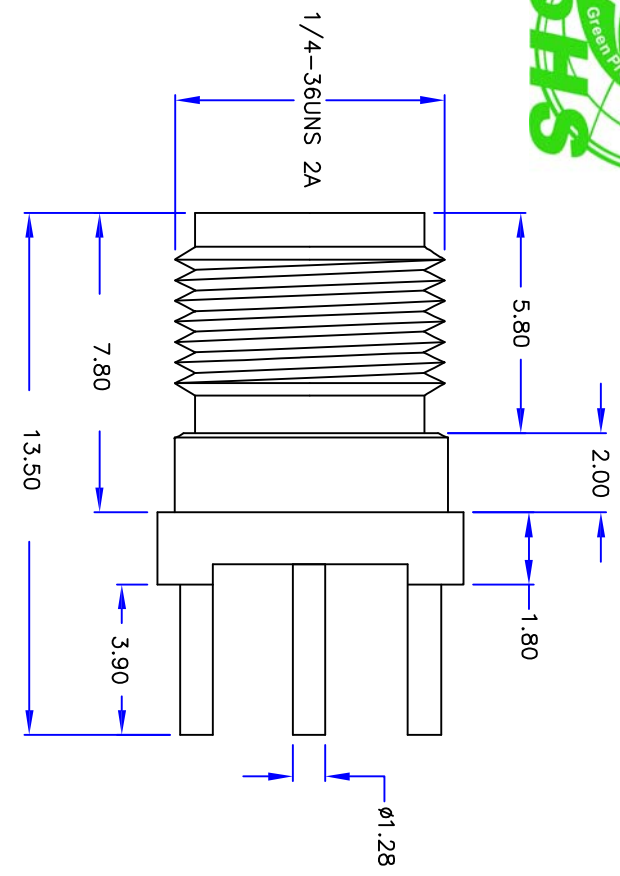




Product NO.		DOSIN-806-0011		
REV	DESCRIPTION	DWN	DATE	APPROVEN
A	First Issue	Mr. Wang	2012/05/06	John Kine



### Specifications:

IMPEDANCE: 50 Ohms  
 Frequency range: 0~6GHz  
 VSWR: 1.5MAX  
 Working voltage: 500V rms @ sea level  
 Insulation resistance: 5000 Ohms min  
 Temperature range: -55°C T0 +155°C  
 Relative temperature:  $\leq 95\%$  (40° C  $\pm 2^\circ$  C)

1	Body	Brass	Au: 1u"	NOTE:					
2	Insulator	TEFLON	White						
3	Center contact	Brass	AU: 3u"		Tolerance	X, X.X, X.XX	$\pm 0.15$ , $\pm 0.10$ , $\pm 0.05$		
4	Washer	Brass	Au: 1u"		View	Angular	$\pm 5^\circ$		
5					UNIT	MM			
6					SCALE	1:1			
7					APPROVALS	John Kine			
8					DATE	06/05/2012			
9					Product NO.	DOSIN-806-0011			
10	Component Number	Material	Finish		CAD FILE	H/company drawings/BD			
A		B		C		D		E	

**DOSIN** anir CONNECTION **Dosin Industrial (HK) Co., Ltd**  
 东莞市德泰五金电子有限公司  
**Dosin Hardware Electronics Co., Ltd**  
 E-mail: dosin2005@163.com  
 dosin2005@dosing-china.com  
 Web: http://www.dosing.com  
 TEL: (0086) 769-81153906  
 FAX: (0086) 769-81878836

Name: SMA connector  
 SIZE: A  
 Date/Time: 2012/05/06  
 SHEET: 1 OF 1