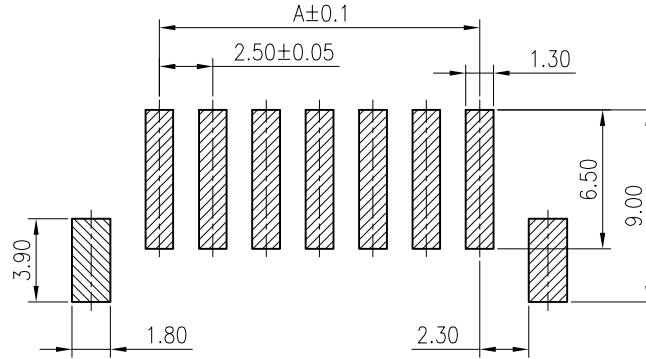
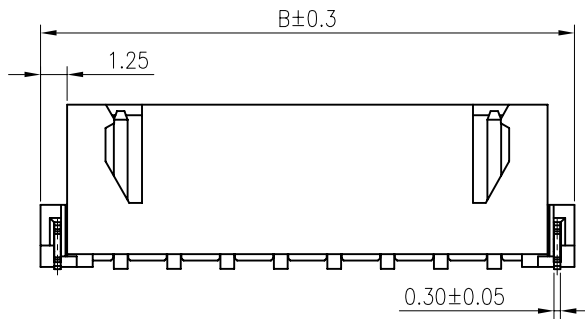
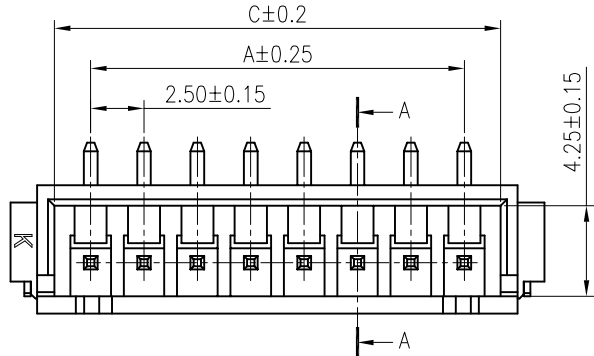
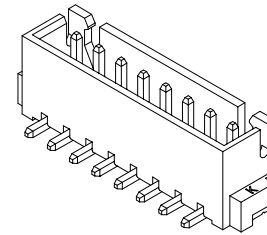
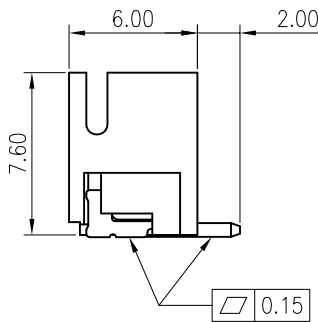
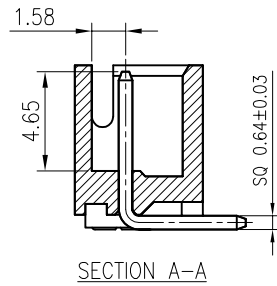


WITH COVER



Recommended P.C.Board Layout



2 Circuits

◆SPECIFICATIONS

- Current rating: 3A AC, DC
- Voltage rating: 250V AC,DC
- Temperature range: -25°C ~ +85°C
- Insulation resistance: 1000M Ω Min.
- Withstanding voltage: 1000V AC/ minute.
- Contact resistance: 20m Ω Max.

Material:

Insulator: Nylon 9T/LCP UL 94V-0

Contact: Brass

Solder Nail: Brass

Plating: Tin plated over Nickel

Circuits: 2-16

Mates: KR2501 series Housing

Ordering code:

C2501VS***64P930

① ②

① Circuits: 002=2P 016=16P

② Material:

P9=PA9T

LP=LCP(Halogen free)

| CKT. | Dimension | | |
|------|-----------|-------|-------|
| | A | B | C |
| 02 | 2.50 | 10.00 | 5.90 |
| 03 | 5.00 | 12.50 | 8.40 |
| 04 | 7.50 | 15.00 | 10.90 |
| 05 | 10.00 | 17.50 | 13.40 |
| 06 | 12.50 | 20.00 | 15.90 |
| 07 | 15.00 | 22.50 | 18.40 |
| 08 | 17.50 | 25.00 | 20.90 |
| 09 | 20.00 | 27.50 | 23.40 |
| 10 | 22.50 | 30.00 | 25.90 |
| 11 | 25.00 | 32.50 | 28.40 |
| 12 | 27.50 | 35.00 | 30.90 |
| 13 | 30.00 | 37.50 | 33.40 |
| 14 | 32.50 | 40.00 | 35.90 |
| 15 | 35.00 | 42.50 | 38.40 |
| 16 | 37.50 | 45.00 | 40.90 |

GENERAL TOLERANCE

UNIT: mm

DATE

TITLE:

JST XH2.5 SMF 180°

WAFER



东莞市康瑞电子有限公司
DongGuan A Rul Electronic Co., LTD.

. X ± 0.3

X° ± 1°

DRAWN:

闵昕皓

2014.11.20

. XX ± 0.2

. X° ±

CHECKED:

. XXX ± 0.1

. XX° ±

APPROVED:

VER.

SCALE:

N/A

A

SHEET:

1/1

PROJECTION

PART NO.

C2501VS***64P930



DRAWING NO.

2501WS101-6-S

| | | | |
|---|--|--|--|
| ④ | | | |
| ③ | | | |
| ② | | | |
| ① | | | |

| LTR | NAME | DATE | VERISION RECORD |
|-----|------|------|-----------------|
|-----|------|------|-----------------|