

REV.	DATE	BY	CHK	APPV	
G	REVISED	ECR-08-016739	10JUL08	KF	HY
H	REVISED	ECR-08-028117	10NOV08	TS	KB
H1	REVISED PER ECO-11-005140		21APR11	RK	HMR
H2	REVISED	ECR-15-005364	09APR15	KF	RK

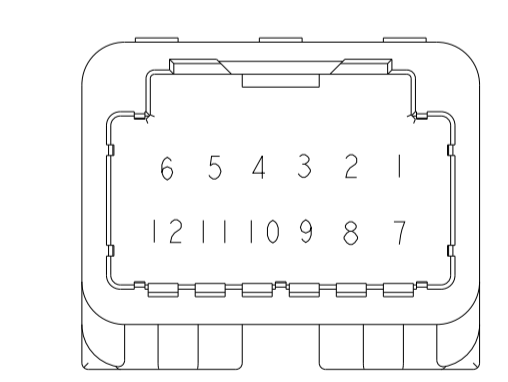
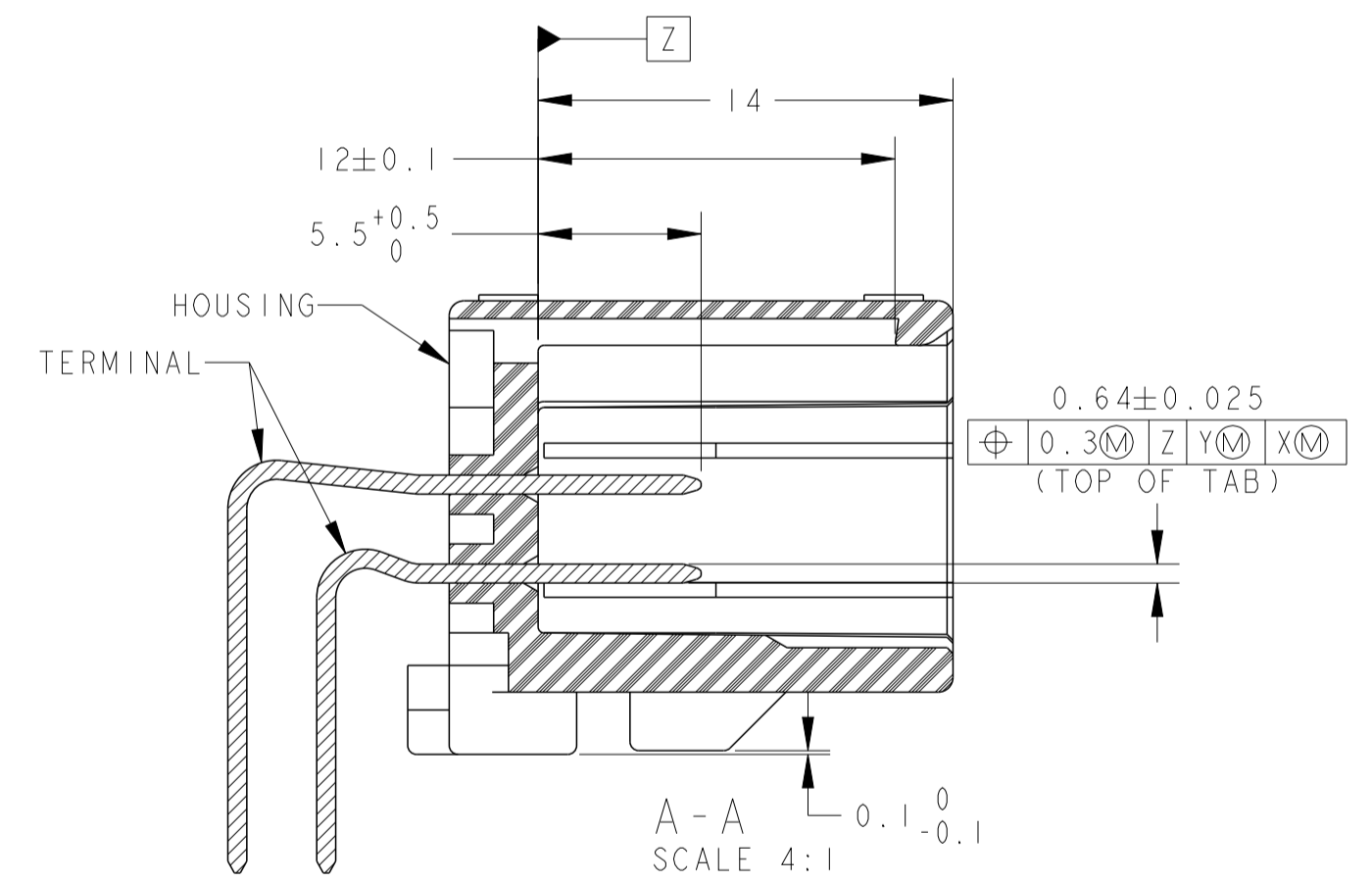
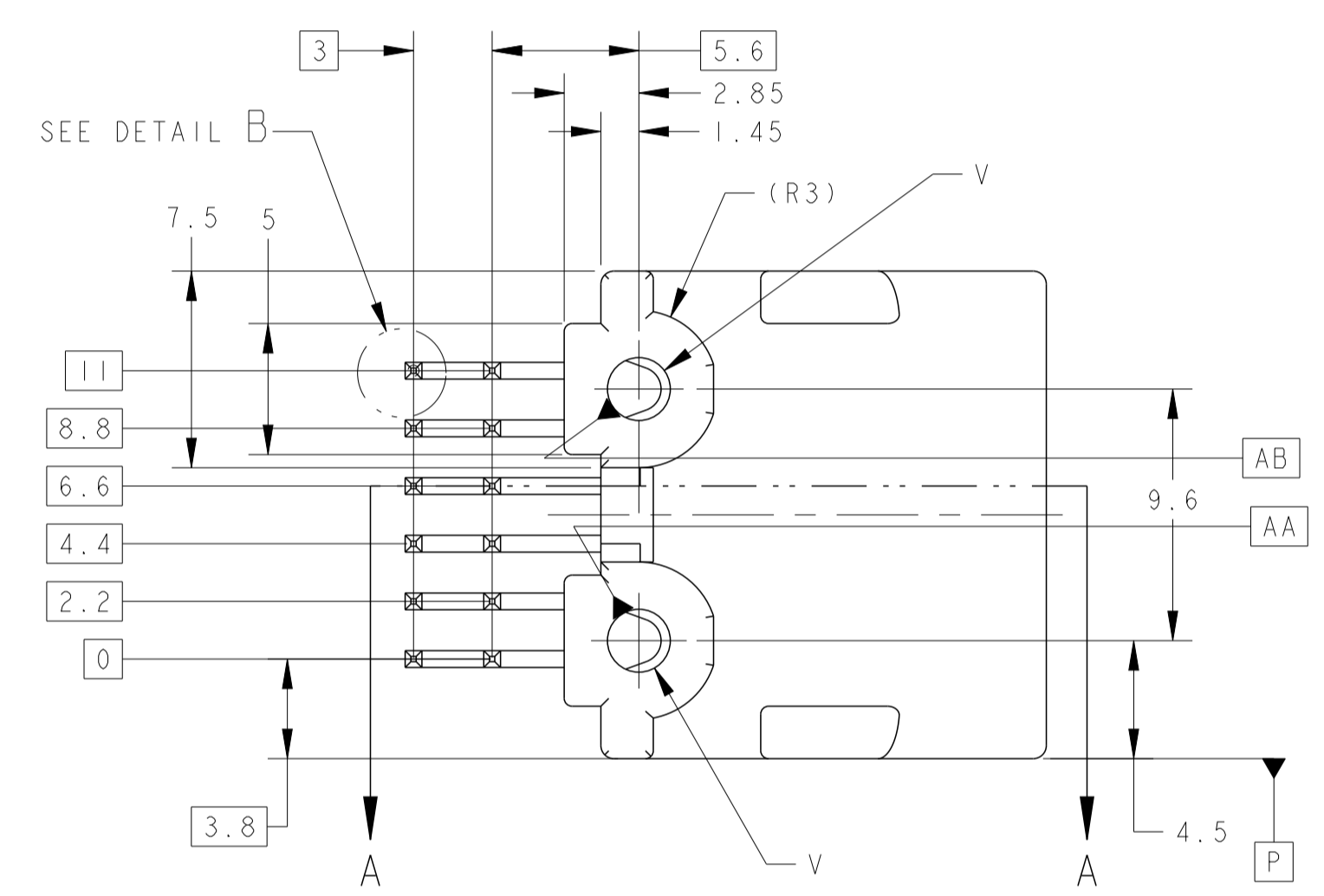
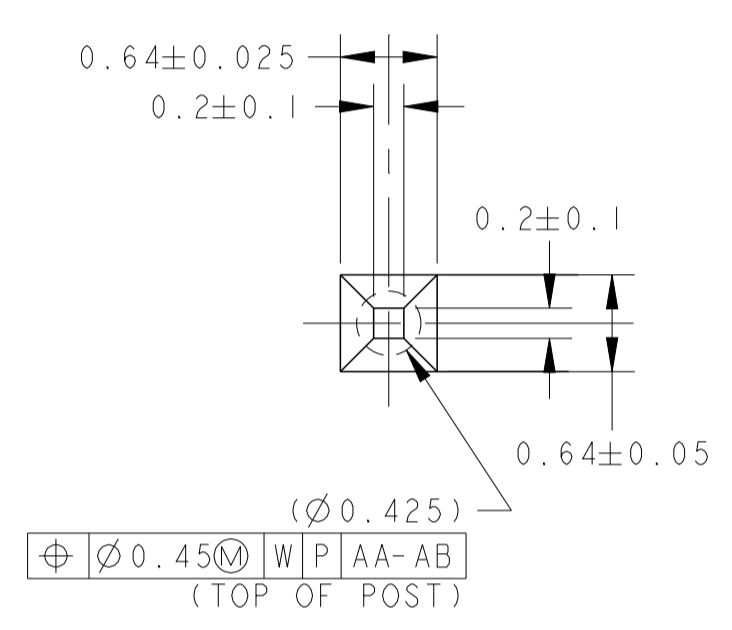
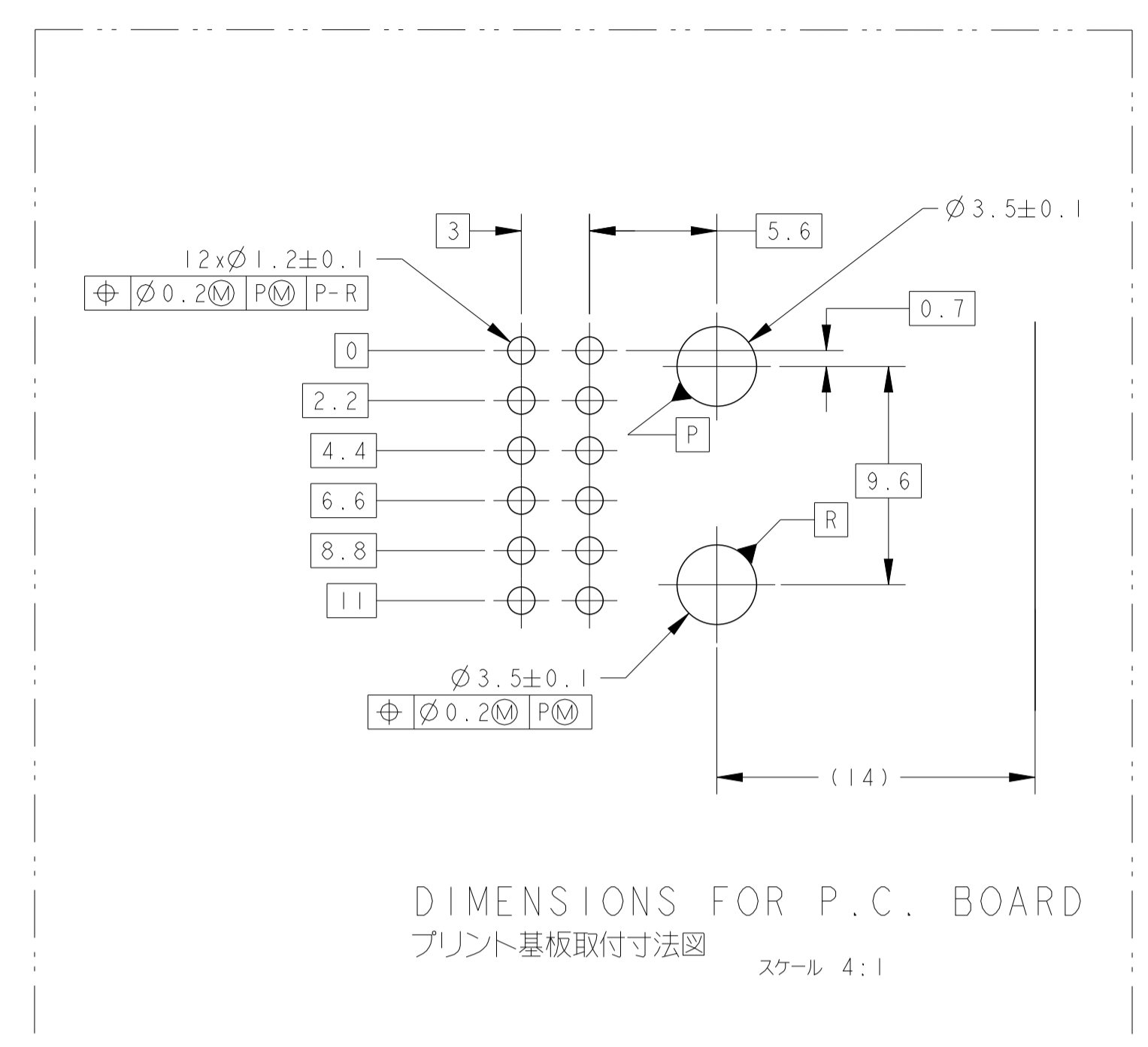
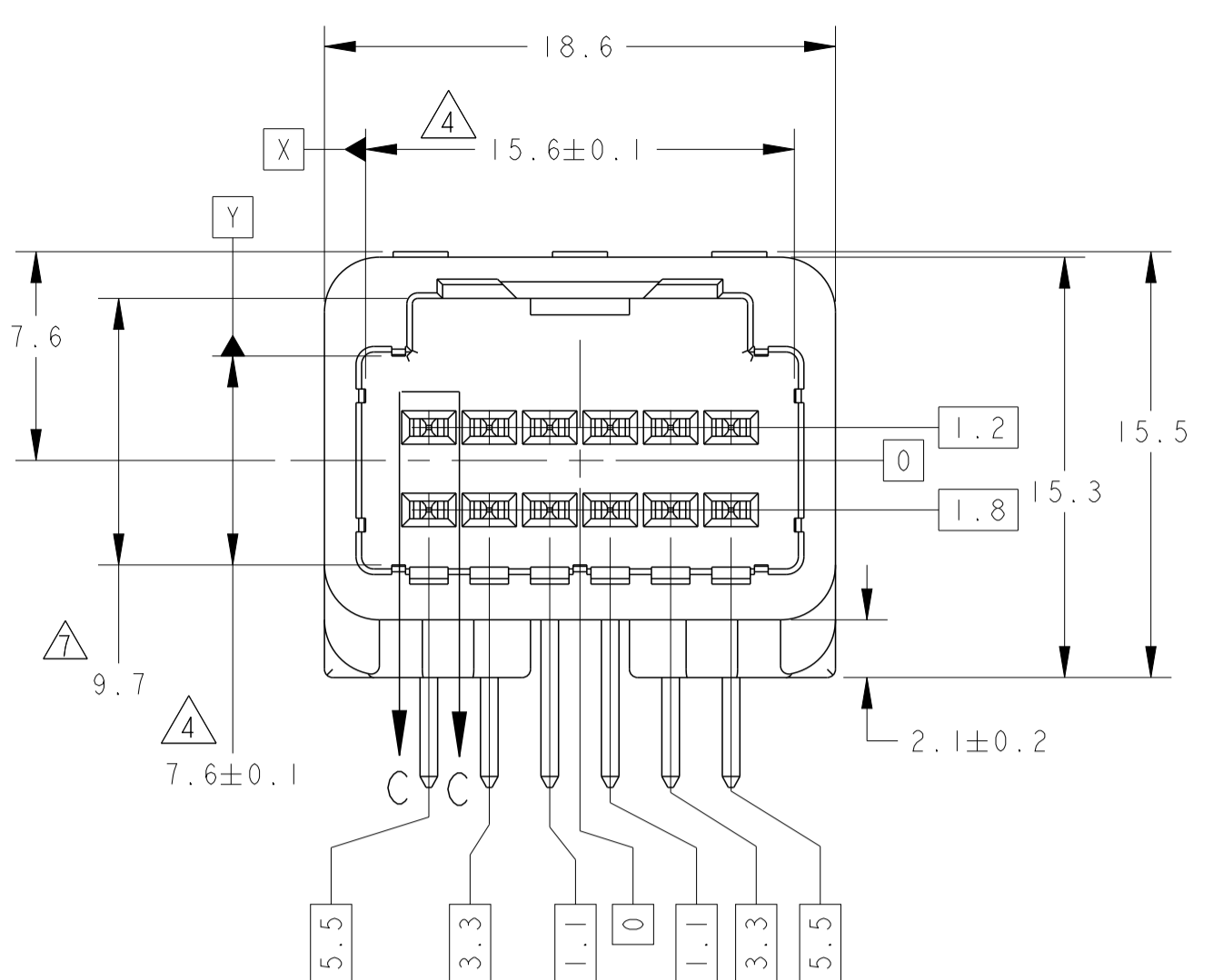
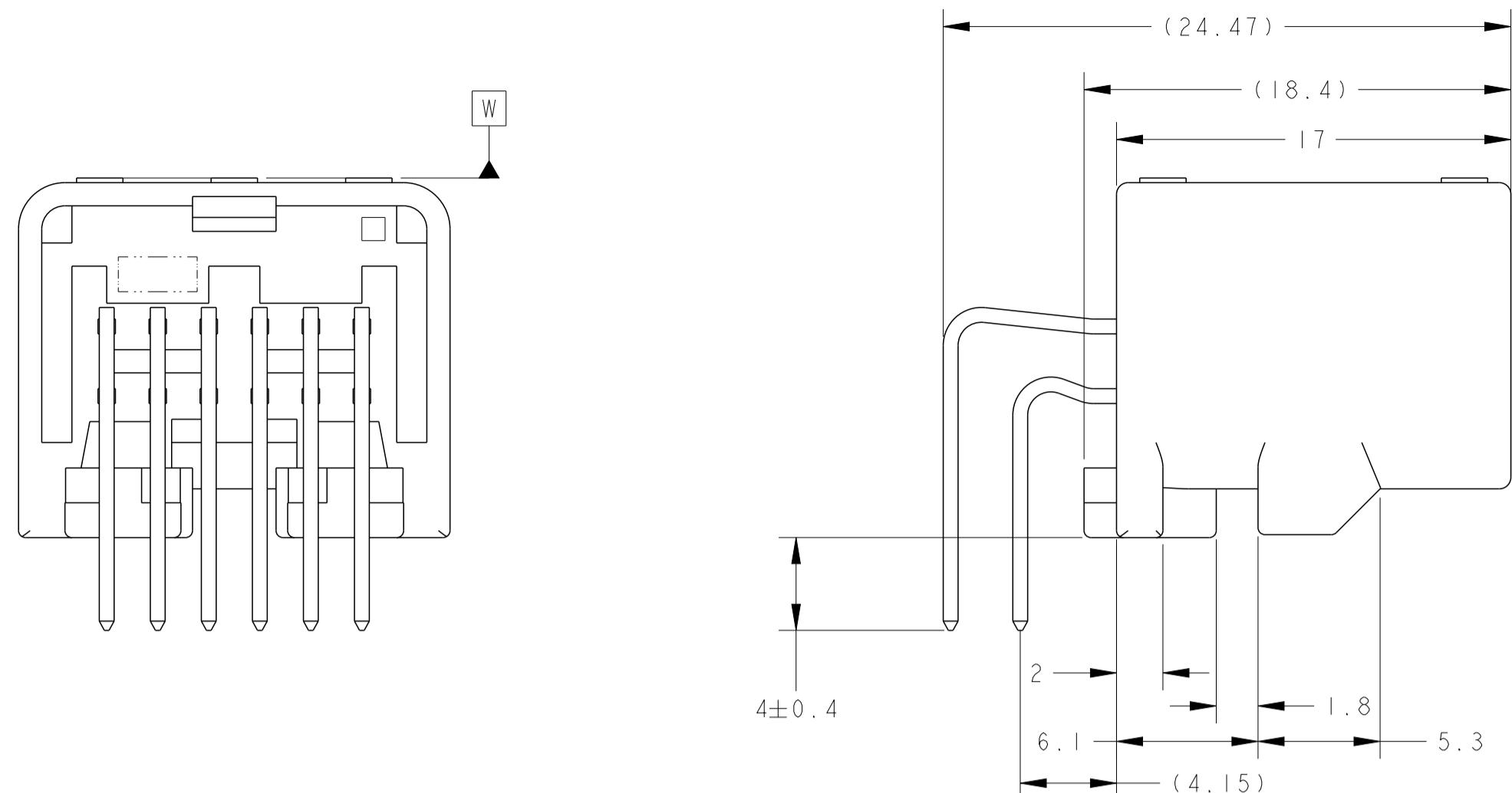


TABLE -1

POS 極数	PLUG HOUSING PART NO	プラグハウジング 型番
12	1318774	
	1376675	
	1717106	
	1746872	

FIG.1 回路図 CIRCUIT NUMBER

1. 嵌合相手ハウジングは TABLE -1 参照
2. プラグハウジングアセンブリと支障なく嵌合すること
3. 推奨取付ねじ: JIS B1115, B1122タッピングねじ
4. ねじ締め付トルク (参考値): 0.392N・m REF
5. ねじ締め付トルク (参考値): 0.392N・m REF
6. 取付位置: 面から6mmの位置で測定
7. 取付位置: 面から2mmの位置で測定
8. 取付位置: 面から2mmの位置で測定
9. 取付位置: 面から2mmの位置で測定
10. 取付位置: 面から2mmの位置で測定
11. 取付位置: 面から2mmの位置で測定
12. 取付位置: 面から2mmの位置で測定

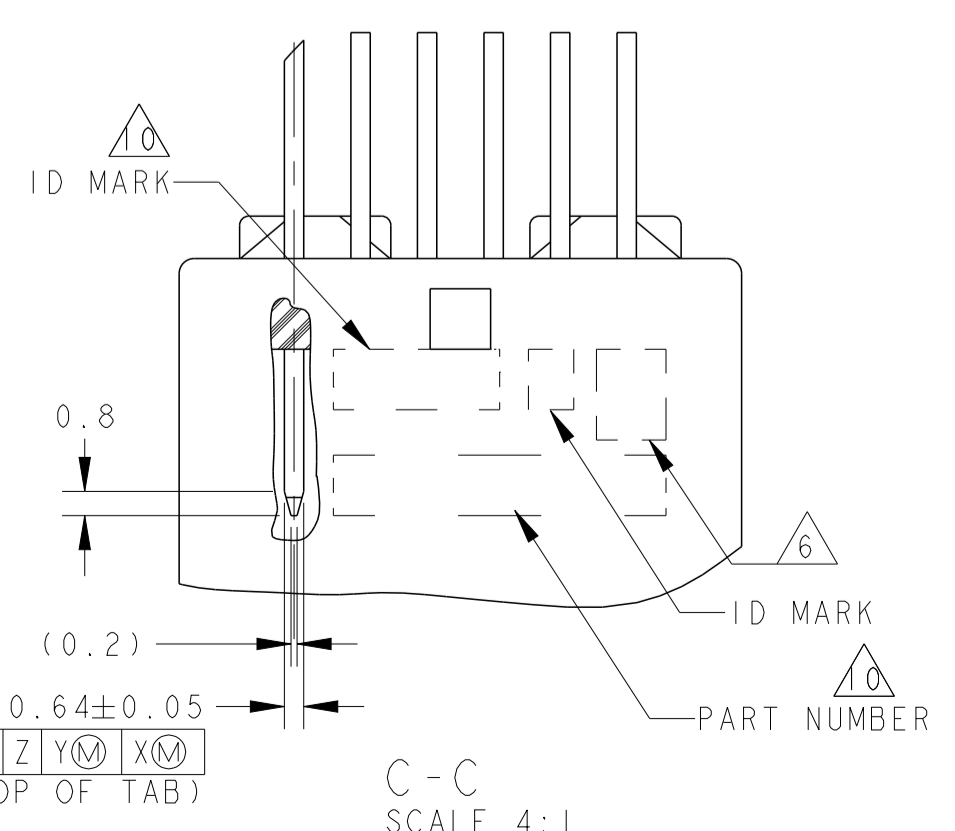


TABLE-2

プリント基板板厚 (mm)	THICKNESS OF PCB (mm)	1.2	1.6
固定用ねじ下長 (mm) <td>NOMINAL LENGTH OF SCREW (mm)</td> <td>5</td> <td>6</td>	NOMINAL LENGTH OF SCREW (mm)	5	6

POS	極数	径	ハウジング	チューブ	回路	端子	メッキ	材料	色	部品
62	3.7	∅2.4	CARTON BOX	PLASTIC TUBE	1~12	SELECTIVE TIN (MATTE)	SELECTIVE GOLD	PBT GF15	NATURAL	6318772-6
△12	3.2	∅2.63	CARTON BOX	PLASTIC TUBE	1~12	SELECTIVE TIN (MATTE)	SELECTIVE GOLD	SPS GF17	BLACK	2-1318772-4
11	3.7	∅2.4	PLASTIC BOX	PLASTIC TUBE	1~9, 11, 12	SELECTIVE TIN (MATTE)	SELECTIVE GOLD	PBT GF15	BLACK	△2-1318772-3
10	3.7	∅2.4	CARTON BOX	PLASTIC TUBE	1~12	SELECTIVE TIN (MATTE)	SELECTIVE TIN (BRIGHT)	PBT GF15	NATURAL	2-1318772-2
62	3.7	∅2.4	CARTON BOX	PLASTIC TUBE	1~12	SELECTIVE TIN (MATTE)	SELECTIVE GOLD	PBT GF15	BLACK	6318772-5
62	3.7	∅2.4	PLASTIC BOX	PLASTIC TUBE	1~12	SELECTIVE TIN (MATTE)	SELECTIVE GOLD	PBT GF15	BLACK	6318772-4
62	3.7	∅2.4	PLASTIC BOX	PLASTIC TUBE	1~12	SELECTIVE TIN (MATTE)	SELECTIVE GOLD	PBT GF15	NATURAL	6318772-3
10	3.7	∅2.4	CARTON BOX	PLASTIC TUBE	1~12	SELECTIVE TIN (MATTE)	SELECTIVE TIN (BRIGHT)	PBT GF15	BLACK	2-1318772-1
10	3.7	∅2.4	PLASTIC BOX	PLASTIC TUBE	1~12	SELECTIVE TIN (MATTE)	SELECTIVE TIN (BRIGHT)	PBT GF15	BLACK	2-1318772-0
△8	3.2	∅2.63	CARTON BOX	PLASTIC TUBE	1~12	SELECTIVE TIN (MATTE)	SELECTIVE GOLD	SPS GF17	NATURAL	1-1318772-9
△6	3.2	∅2.63	CARTON BOX	PLASTIC TUBE	1~12	SELECTIVE TIN (MATTE)	SELECTIVE TIN (BRIGHT)	SPS GF17	BLACK	1-1318772-8
△6	3.2	∅2.63	PLASTIC BOX	PLASTIC TUBE	1~12	SELECTIVE TIN (MATTE)	SELECTIVE TIN (BRIGHT)	SPS GF17	BLACK	1-1318772-7
△6	3.2	∅2.63	PLASTIC BOX	PLASTIC TUBE	1~12	SELECTIVE TIN (MATTE)	SELECTIVE TIN (BRIGHT)	SPS GF17	NATURAL	1-1318772-6
△9	3.2	∅2.63	PLASTIC BOX	PLASTIC TUBE	1~9, 11, 12	SELECTIVE TIN (MATTE)	SELECTIVE GOLD	SPS GF17	BLACK	△1-1318772-5
△8	3.2	∅2.63	PLASTIC BOX	PLASTIC TUBE	1~12	SELECTIVE TIN (MATTE)	SELECTIVE GOLD	SPS GF17	NATURAL	1-1318772-4
△6	3.2	∅2.63	CARTON BOX	PLASTIC TUBE	1~12	SELECTIVE TIN (MATTE)	SELECTIVE TIN (BRIGHT)	SPS GF17	NATURAL	1-1318772-3
5	3.7	∅2.4	PLASTIC BOX	PLASTIC TUBE	1~9, 11, 12	SELECTIVE TIN	SELECTIVE GOLD	PBT GF15	BLACK	△1-1318772-2
4	3.7	∅2.4	CARTON BOX	PLASTIC TUBE	1~12	SELECTIVE TIN	SELECTIVE GOLD	PBT GF15	BLACK	1-1318772-0
4	3.7	∅2.4	CARTON BOX	PLASTIC TUBE	1~12	SELECTIVE TIN	SELECTIVE GOLD	PBT GF15	NATURAL	1318772-9
OBSOLETE	3.7	∅2.4	CARTON BOX	PLASTIC TUBE	1~12	SELECTIVE TIN	PRE-TIN	PBT GF15	BLACK	1318772-8
1	3.7	∅2.4	PLASTIC BOX	PLASTIC TUBE	1~12	SELECTIVE TIN	PRE-TIN	PBT GF15	BLACK	1318772-7
2	3.7	∅2.4	CARTON BOX	PLASTIC TUBE	1~12	TIN-LEAD	SELECTIVE GOLD	PBT GF15	NATURAL	△1318772-6
2	3.7	∅2.4	CARTON BOX	PLASTIC TUBE	1~12	TIN-LEAD	SELECTIVE GOLD	PBT GF15	BLACK	1318772-5
2	3.7	∅2.4	PLASTIC BOX	PLASTIC TUBE	1~12	TIN-LEAD	SELECTIVE GOLD	PBT GF15	BLACK	1318772-4
2	3.7	∅2.4	PLASTIC BOX	PLASTIC TUBE	1~12	TIN-LEAD	SELECTIVE GOLD	PBT GF15	NATURAL	1318772-3
1	3.7	∅2.4	CARTON BOX	PLASTIC TUBE	1~12		PRE-TIN	PBT GF15	NATURAL	1318772-2
1	3.7	∅2.4	PLASTIC BOX	PLASTIC TUBE	1~12		PRE-TIN	PBT GF15	NATURAL	1318772-1
MARKING	WEIGHT (g)	v	OUTER 外装	INNER 内装	1~12	SOLDERING SIDE 半田付け側	CONTACT SIDE 接点側	MATERIAL 材料	COLOR 色	PART NUMBER 部品番号
			PACKING STYLE 梱包形態		CIRCUIT NO. 回路番号	CONTACT FINISH 接点仕上げ		HOUSING ハウジング		

THIS DRAWING IS A CONTROLLED DOCUMENT.

DIMENSIONS: 単位: mm

TOLERANCES UNLESS OTHERWISE SPECIFIED: 公差: mm

MATERIAL: CONTACT: BRASS HOUSING: SEE TABLE

FINISH: 仕上げ

SEE TABLE

TE Connectivity

025 SERIES 12 POSITION (PCB H-TYPE) CAP HOUSING ASSEMBLY

SIZE: A1

CAGE CODE: 114-5250

DRAWING NO: 1318772

RESTRICTED TO

CUSTOMER DRAWING

SCALE: 2:1

SHEET 1 OF 2

REV: H2

4

3

2

1

THIS DRAWING IS UNPUBLISHED.

RELEASED FOR PUBLICATION

© COPYRIGHT 2000

ALL RIGHTS RESERVED.

LOC  
JDIST  
~~---~~REVISIONS  
変更

P

LTR

DESCRIPTION

ECN

DATE

DWN

APVD

SEE 1 OF 2

Technical drawing of a plug housing assembly. It shows a side view of a rectangular component with several pins on the left side. Two vertical dimension lines are shown on the right side, indicating a width of (15.4) and a height of (18.6).

CAP HOUSING ASSEMBLY

PLUG HOUSING ASSEMBLY

Technical drawing of a cap housing assembly. It shows a side view of a rectangular component with several pins on the left side. Three dimension lines are shown: a horizontal line at the top indicating a width of (24.5), and two vertical lines on the right side indicating a height of (15.8) and a total height of (17.2).

CAP ASSEMBLY & PLUG ASSEMBLY ENGAGEMENT DRAWING  
 キャップアッセンブリ & プラグアッセンブリ 嵌合図

THIS DRAWING IS A CONTROLLED DOCUMENT.

DWN Y. NOGUCHI 07FEB00

CHK S. SHINDOU 07FEB00

APVD N. SAI 07FEB00

PRODUCT SPEC

SEE 1 OF 2

APPLICATION SPEC

SEE 1 OF 2

WEIGHT SEE 1 OF 2

CUSTOMER DRAWING

TE Connectivity

NAME  
 名称 025 SERIES 12 POSITION (PCB H-TYPE)  
 MATING LAYOUT

DIMENSIONS:  
 単位: 概  
 mm

TOLERANCES UNLESS  
 OTHERWISE SPECIFIED:

一般公差 ±0.3

0-PLC ±

1-PLC ±

2-PLC ±

3-PLC ±

4-PLC ±

ANGLES ± 3°

MATERIAL  
 材料 SEE 1 OF 2

FINISH  
 仕上 SEE 1 OF 2

SIZE

CAGE CODE

DRAWING NO  
 番号

A3

C-1318772

RESTRICTED TO

-

SCALE  
 尺度 2:1

SHEET 2 OF 2

REV H2

1470-19 (3/11)