



CONQUER Fuse Clip

RoHS



Specification Guide Codes:

A= Item Number

B= Metal Material

C= Material Thickness (mm)

D= Suitable Rated Current

Beryllium Copper Recommended For Current Higher Than 10A To Order Add " Q " e.g. CQ-203S Q

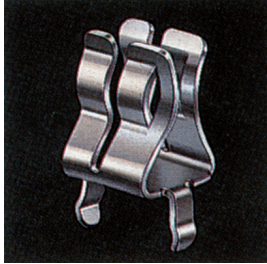
Option Finish Selecting:

N= Nickel Plating

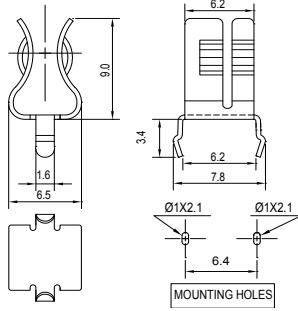
S= Silver Plating

(To Order Add N or S e.g. CQ-205B N)

P.C. BOARD MOUNT FUSE CLIPS FOR 5 mm DIAMETER FUSE



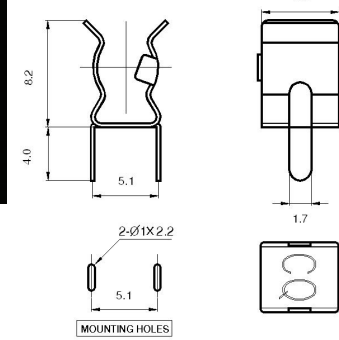
CQ-203K



B: Phosphor Bronze
C: 0.4t
D: 10A
Bright Tin Plated
Ear Type



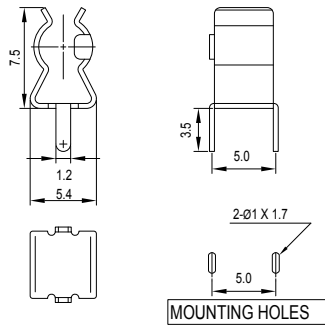
CQ-203LR



B: Phosphor Bronze
C: 0.3t
D: 10A
Bright Tin Plated
Ear Type



CQ-203P

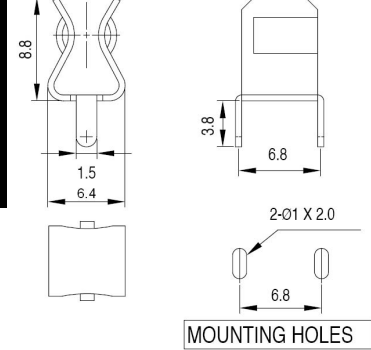


B: Spring Brass
C: 0.4t
D: 10A
Bright Tin Plated
Ear Type



CQ-203S

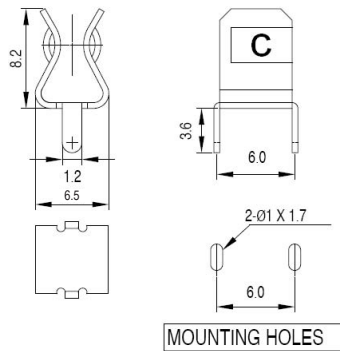
HOT



B: Spring Brass
C: 0.5t
D: 15A
Bright Tin Plated
Ear Type



CQ-203SF (C) HOT

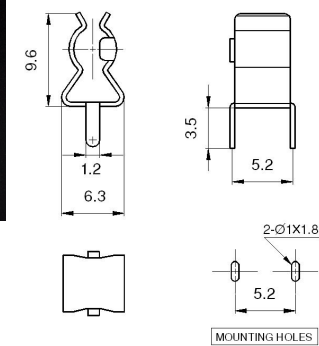


B: Spring Brass
C: 0.4t
D: 10A
Bright Tin Plated
Ear Type



CQ-203SP

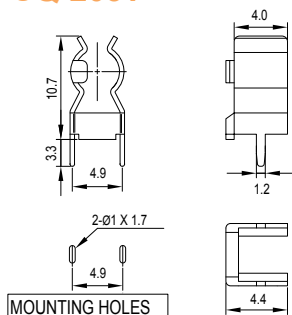
HOT



B: Spring Brass
C: 0.4t
D: 10A
Bright Tin Plated
Ear Type



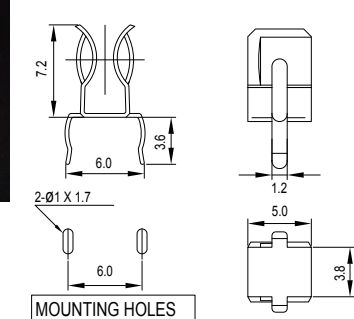
CQ-203T



B: Spring Brass
C: 0.4t
D: 10A
Bright Tin Plated
Ear Type



CQ-450
For 4.5 or 5mm Dia. Fuses



B: Phosphor Bronze
C: 0.4t
D: 10A
Bright Tin Plated
Ear Type