

4

3

2

1

THIS DRAWING IS UNPUBLISHED.

RELEASED FOR PUBLICATION

--

LOC

DIST

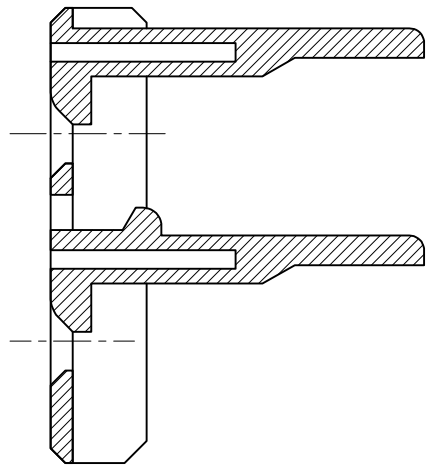
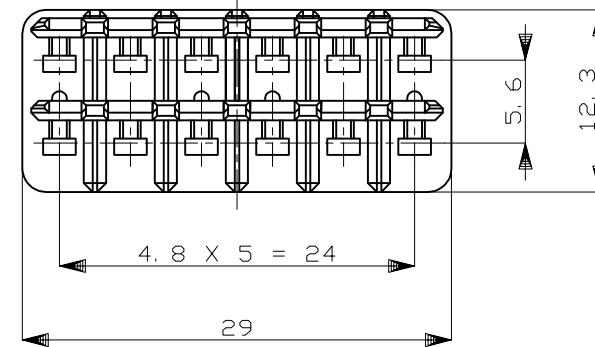
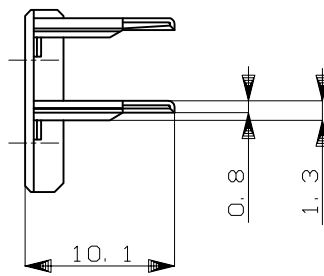
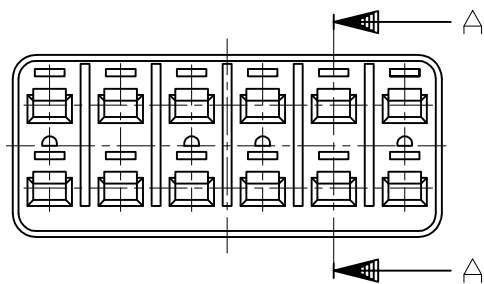
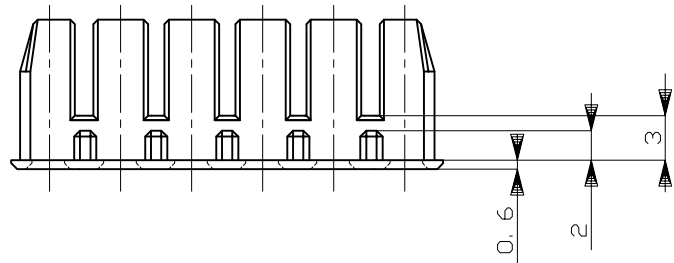
REVISIONS

深圳市众多星电子有限公司

© COPYRIGHT - By -

ALL RIGHTS RESERVED.


| P | LTR | DESCRIPTION | DATE | DWN | APVD |
|----|---------|---------------|-----------|-----|------|
| B1 | REVISED | ECR-15-000191 | 27JAN2015 | TS | KB |



SECTION
断面 A-A
(尺度 5:1)

1. 本品は、プラグハウジング型番174661に装着される。
1. TO BE MATED WITH PLUG HOUSING (PN 174661)

| | | |
|--|------------------|---------------------|
| HB | 自然色 (NATURAL) | 1-174662-1 |
| V-2 | 黄 (YELLOW) | 174662-7 |
| 使用材料難燃グレード (FLAMMABILITY OF MATERIAL) | 色 (COLOR) | 型番 (PART NUMBER) |

| | | | | |
|--|--|-------------------------------|---|------------------------|
| THIS DRAWING IS A CONTROLLED DOCUMENT. | | DWN K.ODA 5/2587 |  TE Connectivity | |
| DIMENSIONS: mm | | CHK Y.MATSUSAKA 5/28'87 | | |
| TOLERANCES UNLESS OTHERWISE SPECIFIED: | | APVD M.NOBUCHI 11/4'88 | NAME 12P. ECONOSEAL J-MARKII+ CONNECTOR DOUBLE LOCK PLATE FOR PLUG HOUSING | |
| 0 PLC ± - 1 PLC ± - 2 PLC ± - 3 PLC ± - 4 PLC ± - ANGLES ± - | | PRODUCT SPEC 108-5262 | SIZE A3 | |
| MATERIAL PBT | | FINISH - | CAGE CODE 00779 | DRAWING NO C=174662 |
| GENERAL TOLERANCE 0 < * ≤ 10 : ±0.2 10 < * ≤ 30 : ±0.25 30 < * ≤ 100 : ±0.3 ANGLES : ±3° | | APPLICATION SPEC - | RESTRICTED TO - | SCALE 2:1 |
| | | WEIGHT - | SHEET 1 of 1 | REV B1 |
| | | CUSTOMER DRAWING | | |

深圳市众多星电子有限公司