

THE INFORMATION ON THIS DRAWING IS THE PROPERTY OF CELESTRA CORPORATION. IS DISCLOSED IN CONFIDENCE AND IS NOT TO BE REPRODUCED, USED OR DISCLOSED EXCEPT FOR THE PURPOSE FOR WHICH FURNISHED

CELESTRA CAT NO.	WIRE SIZE		BOLT SIZE	B	C	D	F	G	H	ID
	CODE	FLEX		MIN	±0.04	±0.01	±0.02	±0.01	±0.04	±0.01
DB061458F-261	6 AWG	61/24	1/4	1.27	0.48	0.08	0.31	0.63	0.50	0.22

NOTE:

- ALL DIMENSIONS ARE IN INCH UNLESS OTHERWISE SPECIFIED.
- ALL DA, DB, LA, LB, WP, AND J SERIES OF CAT. NO. S ARE LISTED BY "UNDERWRITERS INC" AND "CSA" FOR USE ON CODE WIRES AND FLEX/24 STRANDED CABLES.

PRE-FIX CAT. NO. WITH "L" HAS NOT PEEP HOLE UNLESS OTHERWISE SPECIFIED IN THE SUFFIX OF THE CAT. NO. WITH "P"

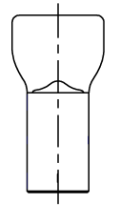
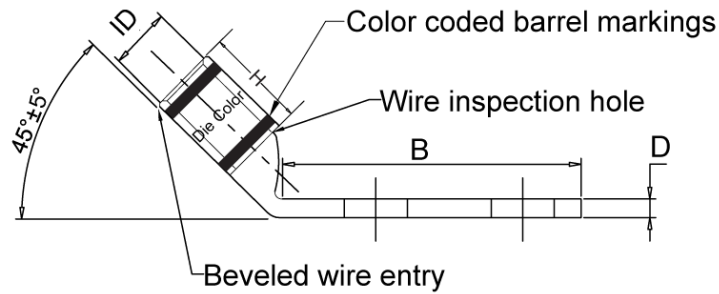
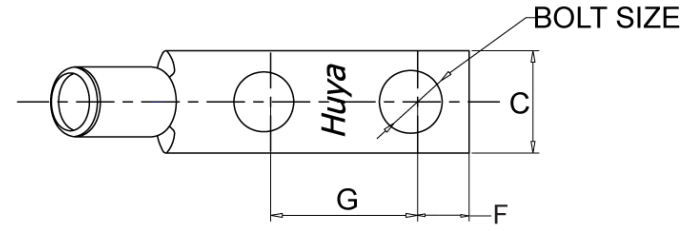
MATERIAL: HIGH CONDUCTIVITY WROUGHT COPPER

FINISH: ELECTRO-TIN PLATE UNLESS OTHERWISE SPECIFIED PLATE PER MIL-T-16366 SUFFIX CAT. NO. WITH "SP" FOR SILVER.

INSTALLATION GUIDE
DIE CODE=24
DIE COLOR=BLUE



Cust.P/N: /



REV	DATE	DWN	CHK	DESCRIPTION	ECN
00	02-Aug-12	IRIS JIAN	SINIA QIU	Celestra Standards Spec. Initialed.	N/A



CELESTRA CORPORATION
76. ZHONGSI HUANCUN ROAD, ZHONGCUN TOWN.
PANYU DIST, GUANGZHOU, 511495 CHINA
www.celestra.cn

TITLE: WIRE CONNECTORS AND SOLDERING LUGS FOR CODE AND FLEX CABLE

MATERIAL: HIGH	PRT NO. DB061458F-261	SCALE NTS	THIRD ANGLE PROJECTION
FINISH: ELECTRO-TIN PLATE	DWG NO. 186-35120802	UNIT INCH	