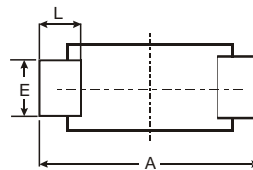
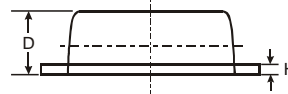
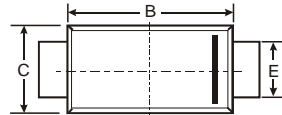


Features

- Low power loss, high efficiency
- High forward surge current capability
- High temperature soldering guaranteed:
250°C/10 seconds, 0.375(9.5mm) lead length,
5 lbs. (2.3kg) tension

Mechanical Data

- Case: JEDEC SOD-123FL molded plastic body over passivated junction
- Terminals : Plated axial leads,
solderable per MIL-STD-750, Method 2026
- Polarity : Color band denotes cathode end
- Mounting Position : Any
- Weight: 0.0007 ounce, 0.02 grams



SOD-123FL			
Dim	Min	Max	Typ
A	3.58	3.72	3.65
B	2.72	2.78	2.75
C	1.77	1.83	1.80
D	1.02	1.08	1.05
E	0.097	1.03	1.00
H	0.13	0.17	0.15
L	0.53	0.57	0.55
All Dimensions in mm			

Maximum Ratings @ T_A = 25°C unless otherwise specified

Parameter	Symbol	Limits	Unit
Reverse voltage (repetitive peak)	V _{RM}	30	V
Reverse voltage (DC)	V _R	30	V
Average rectified forward current Mounted on epoxy board. 180° Half sine wave	I _o	1.5	A
Forward current surge peak (60Hz · 1cyc)	I _{FSM}	30	A
Junction temperature	T _j	150	°C
Storage temperature	T _{stg}	-40 to +150	°C

Electrical characteristics (T_a=25°C)

Parameter	Symbol	Min.	Typ.	Max.	Unit	Conditions
Forward voltage	V _{F1}	-	0.37	0.43	V	I _F =0.5A
	V _{F2}	-	0.44	0.49	V	I _F =1.5A
Reverse current	I _R	-	9.0	50	μA	V _R =30V

